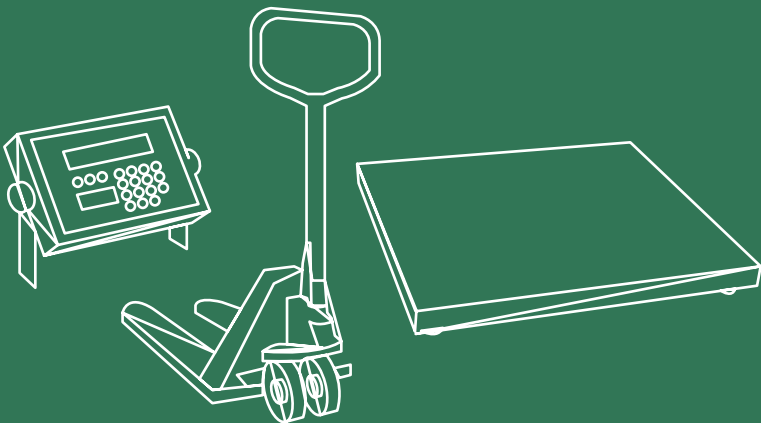


INDUSTRY



INDUSTRY 2023-2024



INDUSTRY
2023/2024

Update September 2023



OUR PRODUCTS

WEIGHING PLATFORMS

M-type single cell platforms	9
M-type single cell floor scales in painted steel with display	11
M-type single cell floor scales in stainless steel with display	12
PVS/A type 4-cell platforms to be buried flush with the floor	13
PVS/C type 4-cell platforms to be buried flush with the floor and above ground	15
PVS/B type 4-cell platforms for installation above floor	17
PVS/A type 4-cell platforms to be buried flush with the floor, openable version	19
PVM/A/B type 4-cell platforms, shockproof	21
PLP-type 4-cell low-profile platforms	23
PFE iron-weighing 4-cell platforms	25
Overhead weighbridge / BME wall scale	26
Wheel weighing platforms	27
Special platforms	28

INDUSTRIAL INDICATORS AND WEIGHT REPEATERS

Weight displays without printer	
Abs Fly E2 display	30
Stainless steel SC-1/60 display	31
Abs Fly/1 display	32
Stainless steel Fly mini display	33
Fly TN-IP67 display	34
Fly Plus display	35
Stainless steel lscale display	37
Weight displays with printer	39
Touch screen weight displays with printer	41
Printers for Eurobil displays	43
Flush-mounted displays for checks and dosage	44
Weight transmitters	46
ATEX weight displays	49
Weight repeaters	50

INDUSTRIAL PIECE COUNTERS

Stainless steel piece counter	51
Piece counter software / PC Touch Screen 15"	53

MOTION WEIGHING

TP pallet truck scales	54
ATEX pallet truck scales	55
PFL weighing forks	56
TP pallet weighing	57
Twist Lock weighing system	58

WEIGHT AND VOLUME DETECTION SYSTEMS

Volumetric scales	60
Weight and volume motion detection system	61
E-Flash Scan weight and volume detection system	62

WEIGHING AND LABELLING STATIONS	Weighing and labelling stations	63
	PC Touch Screen 15"	64
	Labelling software	65
	Trolleys	66
	Labelling printers	67
	Barcode readers	68

BRIDGE WEIGHING MACHINES	Type SP-A bridge weighing machines	69
	SP-D type bridge and PE axle weighing machines	70
	Full double lane bridge weighing machines	71
	Double lane bridge weighing machines with central opening	72
	4-cell PVS/A type vehicle weighing platforms	73
	Bridge weighing scale software / PC Touch Screen 15"	74
	Coin box for bridge weighing machine	75

LOAD CELLS	Load cells	76
	Anti-tilt joint kit with cell	80
	Load cell accessories	81
	Load cell data sheets	83

PROFIT AREA	OCS dynamometers	99
	FMS02 4-cell platforms with display or platform only	100
	FR single-cell platforms with display or platform only	101
	APS AW pallet truck scale	102
	A12 floor scales	103
	ACS-Z scale	104

M-TYPE SINGLE CELL PLATFORMS



M15



M30



M40/M60/M80

Main features:

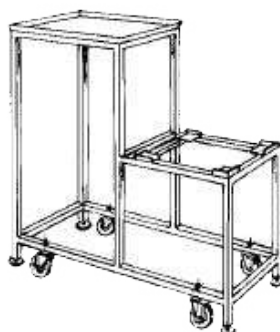
- Single cell weighing platform in painted steel or AISI 304 stainless steel.
- Weight detection by a stainless steel "off centre" load cell with IP67 protection approved up to 4000 divisions (fully welded IP69 stainless steel load cell on request).
- Shielded 3m display connection cable.



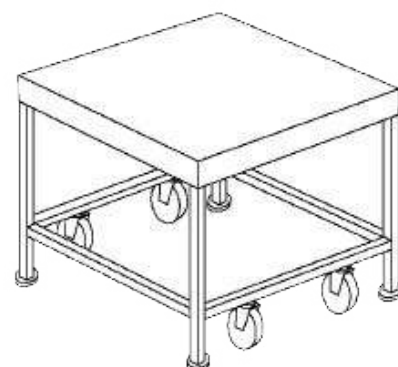
Floor
scale version



Display stand



Double
decker trolley



Trolley

Available versions with approved load cells up to 4000 divisions

Model	Load and DIV		1° Range		Painted code	Inox code
	Max kg	e g	Max kg*	e g*		
15x15	0,6	0,2				PM110K6
	1,5	0,5				PM111K5
30x30	3	1	1	0,5		PM31003
	6	2	3	1		PM31006
	15	5	6	2		PM31015
	30	10	15	5		PM31030
40x40	30	10	15	5	PM43030	PM48030
	60	20	30	10	PM43060	PM48060
	150	50	60	20	PM43150	PM48150
60x60	60	20	30	10	PM63060	PM68060
	150	50	60	20	PM63150	PM68150
	300	100	150	150	PM63300	PM68300
80x80	150	50	60	20	PM83150	PM88150
	300	100	150	50	PM83300	PM88300
	600	200	300	100	PM83600	PM88600

*For approved to 6000 divisions version up to size 40x40 + 10% on above prices

IP68 cells **Price on request**

Special sizes and capacities **Price on request**

M-type platform accessories	Painted code	Inox code
40x40 stainless steel plate for normal		API186108095
60x60 stainless steel plate for normal		API0099A-I
80x80 stainless steel plate for normal		API0101A-I
40 cm side rail	OM40SPD	OM41SPD
60 cm side rail	OM60SPD	OM61SPD
80 cm side rail	OM80SPD	OM81SPD
Trolley for M40 double decker	OM40C2P	OM41C2P
Trolley for M60 double decker	OM60C2P	OM61C2P
Trolley for M40	OM40CAR	OM41CAR
Trolley for M60	OM60CAR	OM61CAR
Trolley for M80	OM80CAR	OM81CAR
60 cm ramp	OSB0RMP-060X090	OSB1RMP-060X090
Oval display stand 310 mm		AND186108057310
Oval display stand 550 mm		AND186108135
Oval display stand 1050 mm		AND186108137



Radio Frequency Platform Connection Module - Indicator

RF868/RS232-RS485-USB waterproof radio transceiver with antenna to be mounted on display.
- Internal rechargeable batteries (autonomy 200 h)

Weight radio transmitter card mod. S178 with antenna and 4 stylus ni-mh 2500mah to be mounted on platform

Code

OGEO-RF868

OGEO-RF868

M-TYPE SINGLE CELL FLOOR SCALES IN PAINTED STEEL WITH DISPLAY



M 40x40



M 60x60



M 80x80

Main features:

- Single-cell weighing platform in painted steel or with stainless steel plate.
- Weight detection by an "off-centre" stainless steel load cell with IP67 protection approved for up to 4000 divisions.
- Variable-height column in aluminium and plate with tailboard.
- **FLY/1 STANDARD** model weight display in ABS plastic, with bracket and battery.

Models with Fly/1 Standard display	Load and DIV	Painted code
M 40x40	Kg.15/30/60/150 : MR	BM403..
M 60x60	Kg.30/60/150/300 : MR	BM603..
M 80x80	Kg. 60/150/300/600 : MR	BM803..

Special sizes and capacities **Price on request**

NOTE (please specify when ordering)

B – low column 55 cm

A – high column 105 cm

ACCESSORIES per bilichetti verniciati	Code
Plate a 3 sponde inox per piattaforma Model M 40x40	OM41PT3
Plate a 3 sponde inox per piattaforma Model M 60x60	OM61PT3

M-TYPE SINGLE CELL FLOOR SCALES IN STAINLESS STEEL WITH DISPLAY



M 30x30



M 40x40



M 60x60



M 80x80

Main features:

- Single cell weighing platform made entirely of stainless steel.
- Weight detection by a stainless steel "off centre" load cell with IP67 protection approved up to 4000 divisions (fully welded IP68 stainless steel load cell on request).
- Variable-height column in aluminium and plate with tailboard.
- **FLY MINI** model weight display in stainless steel, with bracket and battery.

MODELS WITH FLY MINI DISPLAY	LOAD AND DIV	INOX CODE
M 30x30	Kg.3/6/15/30 : MR	BM308..
M 40x40	Kg.15/30/60/150 : MR	BM408..
M 60x60	Kg.30/60/150/300 : MR	BM608..
M 80x80	Kg. 60/150/300/600 : MR	BM808..

Special sizes and capacities **Price on request**

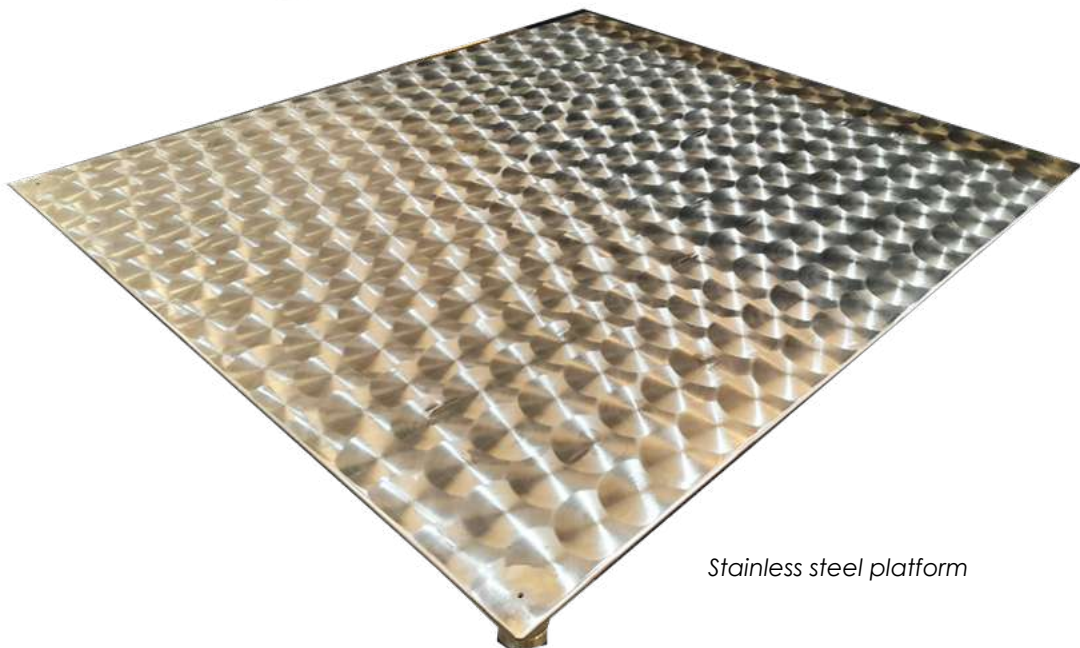
NOTE (please specify when ordering)

B – low column 55 cm

A – high column 105 cm

Stainless steel floor scales accessories	Code
3-sided stainless steel plate for platform model M 40x40	OM41PT3
3-sided stainless steel plate for platform model M 60x60	OM61PT3

PVS/A TYPE 4 - CELL PLATFORMS TO BE BURIED FLUSH WITH THE FLOOR



Stainless steel platform

Main features:

- Single-structure weighing platform in painted steel (with smooth plate) or stainless steel (with circle polished plate) for floor installation.
- Weight measurement by 4 stainless steel shear beam load cells, approved up to 4000 divisions and with IP67 protection (for the painted steel platform) or with IP69 protection (for the stainless steel platform).
- Shielded 5m display connection cable.
- Self-centring articulated feet for each load cell and spirit level.
- Junction box with card, connectors and IP68 protection.
- Frame for foundation pit with 4 support leg corners (optional)

Available versions with approved load cells up to 4000 divisions

Model	Load and DIV		1° Range			Painted code		Inox code
	Max kg	e g	Max kg*	e g*				
80x80	150	50	60	20		PSA0150-080X080		PSA1150-080X080
	300	100	150	50		PSA0300-080X080		PSA1300-080X080
	600	200	300	100		PSA0600-080X080		PSA1600-080X080
100x100	300	100	150	50		PSA0300-100X100		PSA1300-100X100
	600	200	300	100		PSA0600-100X100		PSA1600-100X100
	1500	500	600	200		PSA01T5-100X100		PSA11T5-100X100
100x125	600	200	300	100		PSA0600-100X125		PSA1600-100X125
	1500	500	600	200		PSA01T5-100X125		PSA11T5-100X125
	3000	1000	1500	500		PSA03T0-100X125		PSA13T0-100X125
125x125	600	200	300	100		PSA0600-125X125		PSA1600-125X125
	1500	500	600	200		PSA01T5-125X125		PSA11T5-125X125
	3000	1000	1500	500		PSA03T0-125X125		PSA13T0-125X125
125x150	600	200	300	100		PSA0600-125X150		PSA1600-125X150
	1500	500	600	200		PSA01T5-125X150		PSA11T5-125X150
	3000	1000	1500	500		PSA03T0-125X150		PSA13T0-125X150
125x200	600	200	300	100		PSA0600-125X200		PSA1600-125X200
	1500	500	600	200		PSA01T5-125X200		PSA11T5-125X200
	3000	1000	1500	500		PSA03T0-125X200		PSA13T0-125X200
150x150	600	200	300	100		PSA0600-150X150		PSA1600-150X150
	1500	500	600	200		PSA01T5-150X150		PSA11T5-150X150
	3000	1000	1500	500		PSA03T0-150X150		PSA13T0-150X150
150x200	600	200	300	100		PSA0600-150X200		PSA1600-150X200
	1500	500	600	200		PSA01T5-150X200		PSA11T5-150X200
	3000	1000	1500	500		PSA03T0-150X200		PSA13T0-150X200
150x250	1500	500	600	200		PSA01T5-150X250		PSA11T5-150X250
	3000	1000	1500	500		PSA03T0-150X250		PSA13T0-150X250

Special sizes and capacities **Price on request**

Additional cost for removable screwed plate **Price on request**

PVS/A 4-cell platform accessories		Painted code		Inox code
Frame 80x80		ACB0582N080X080		ACB0582I080X080
Frame 100x100		ACB0584N100X100		ACB0584I100X100
Frame 100x125		ACB0585N100X125		ACB0585I100X125
Frame 125x125		ACB0586N125X125		ACB0586I125X125
Frame 125x150		ACB0587N125X150		ACB0587I125X150
Frame 125x200		ACB0588N125X200		ACB0588I125X200
Frame 150x150		ACB0589N150X150		ACB0589I150X150
Frame 150x200 Max 1000 kg		ACB0590N150X200		ACB0590I150X200
Frame 150x200 Max 3000 kg		ACB0592N150X200		ACB0592I150X200
Frame 150x250		ACB0593N150X250		ACB0593I150X250
Sheathing insulation				OGE1COB
Platform stand H 200 mm		CAVALLETTO		CAVALLETTO-I
Display floor stand		OGE0COP		OGE1CLE

PVS/C TYPE 4 - CELL PLATFORMS TO BE BURIED FLUSH WITH THE FLOOR AND ABOVE GROUND



Main features:

- Single-structure weighing platform in painted steel (with smooth plate).
- Weight measurement by 4 stainless steel shear beam load cells, approved up to 3000 divisions and with IP67 protection.
- Shielded 5m display connection cable.
- Self-centring articulated feet for each load cell and spirit level.
- Junction box with card, connectors and IP68 protection.
- Frame for foundation pit with 4 support leg corners (optional)

Available versions with approved load cells up to 3000 divisions

Model	Load and DIV		1° Range				Painted code
	Max kg	e g	Max kg*	e g*			
80x80	150	50	60	20			PSC0150-080X080
	300	100	150	50			PSC0300-080X080
	600	200	300	100			PSC0600-080X080
100x100	300	100	150	50			PSC0300-100X100
	600	200	300	100			PSC0600-100X100
	1500	500	600	200			PSC01T5-100X100
100x125	600	200	300	100			PSC0600-100X125
	1500	500	600	200			PSC01T5-100X125
	3000	1000	1500	500			PSC03T0-100X125
125x125	600	200	300	100			PSC0600-125X125
	1500	500	600	200			PSC01T5-125X125
	3000	1000	1500	500			PSC03T0-125X125
125x150	600	200	300	100			PSC0600-125X150
	1500	500	600	200			PSC01T5-125X150
	3000	1000	1500	500			PSC03T0-125X150
150x150	600	200	300	100			PSC0600-150X150
	1500	500	600	200			PSC01T5-150X150
	3000	1000	1500	500			PSC03T0-150X150
125x200	600	200	300	100			PSC0600-125X200
	1500	500	600	200			PSC01T5-125X200
	3000	1000	1500	500			PSC03T0-125X200
150x200	600	200	300	100			PSC0600-150X200
	1500	500	600	200			PSC01T5-150X200
	3000	1000	1500	500			PSC03T0-150X200

Special sizes and capacities **Price on request**

Additional cost for removable screwed plate **Price on request**

PVS/C 4-cell platform accessories	Painted code	Inox code
Frame 80x80	ACB0582N080X080	ACB0582I080X080
Frame 100x100	ACB0584N100X100	ACB0584I100X100
Frame 100x125	ACB0585N100X125	ACB0585I100X125
Frame 125x125	ACB0586N125X125	ACB0586I125X125
Frame 125x150	ACB0587N125X150	ACB0587I125X150
Frame 125x200	ACB0588N125X200	ACB0588I125X200
Frame 150x150	ACB0589N150X150	ACB0589I150X150
Frame 150x200 Max 1000 kg	ACB0590N150X200	ACB0590I150X200
Frame 150x200 Max 3000 kg	ACB0592N150X200	ACB0592I150X200
Frame 150x250	ACB0593N150X250	ACB0593I150X250
Sheathing insulation		OGE1COB
Platform stand H 200 mm	CAVALLETTO	CAVALLETTO-I
Display floor stand	OGE0COP	OGE1CLE

PVS/B TYPE 4 - CELL PLATFORMS FOR INSTALLATION ABOVE FLOOR



Main features:

- Single-structure weighing platform in painted steel (with smooth plate) or stainless steel (with circle polished plate) for installation above floor.
- Weight measurement by 4 stainless steel shear beam load cells, approved up to 4000 divisions and with IP67 protection (for the painted steel platform) or with IP69 protection (for the stainless steel platform).
- Shielded 5m display connection cable.
- Self-centring articulated feet for each load cell and spirit level.
- Junction box with card, connectors and IP68 protection.

Available versions with approved load cells up to 4000 divisions

Model	Load and DIV		1° Range			Painted code		Inox code
	Max kg	e g	Max kg*	e g*				
80x80	150	50	60	20		PSB0150-080X080		PSB1150-080X080
	300	100	150	50		PSB0300-080X080		PSB1300-080X080
	600	200	300	100		PSB0600-080X080		PSB1600-080X080
100x100	300	100	150	50		PSB0300-100X100		PSB1300-100X100
	600	200	300	100		PSB0600-100X100		PSB1600-100X100
	1500	500	600	200		PSB01T5-100X100		PSB11T5-100X100
100x125	600	200	300	100		PSB0600-100X125		PSB1600-100X125
	1500	500	600	200		PSB01T5-100X125		PSB11T5-100X125
	3000	1000	1500	500		PSB03T0-100X125		PSB13T0-100X125
125x125	600	200	300	100		PSB0600-125X125		PSB1600-125X125
	1500	500	600	200		PSB01T5-125X125		PSB11T5-125X125
	3000	1000	1500	500		PSB03T0-125X125		PSB13T0-125X125
125x150	600	200	300	100		PSB0600-125X150		PSB1600-125X150
	1500	500	600	200		PSB01T5-125X150		PSB11T5-125X150
	3000	1000	1500	500		PSB03T0-125X150		PSB13T0-125X150
125x200	600	200	300	100		PSB0600-125X200		PSB1600-125X200
	1500	500	600	200		PSB01T5-125X200		PSB11T5-125X200
	3000	1000	1500	500		PSB03T0-125X200		PSB13T0-125X200
150x150	600	200	300	100		PSB0600-150X150		PSB1600-150X150
	1500	500	600	200		PSB01T5-150X150		PSB11T5-150X150
	3000	1000	1500	500		PSB03T0-150X150		PSB1600-150X200
150x200	600	200	300	100		PSB0600-150X200		PSB11T5-150X200
	1500	500	600	200		PSB01T5-150X200		PSB11T5-150X200
	3000	1000	1500	500		PSB03T0-150X200		PSB13T0-150X150
150x250	1500	500	600	200		PSB01T5-150X250		PSB11T5-150X250
	3000	1000	1500	500		PSB03T0-150X250		PSB13T0-150X250

Special sizes and capacities **Price on request**

Additional cost for removable screwed plate **Price on request**

PVS/B 4-cell platform accessories		Painted code		Inox code
Ramp 80x90		OSB0RMP-080X090		OSB1RMP-080X090
Ramp 100x90		OSB0RMP-100X090		OSB1RMP-100X090
Ramp 125x90		OSB0RMP-125X090		OSB1RMP-125X090
Ramp 150x90		OSB0RMP-150X090		OSB1RMP-150X090
Stainless steel cover 80x80				OSB1COI-080X080
Stainless steel cover 100x100				OSB1COI-100X100
Stainless steel cover 100x125				OSB1COI-100X125
Stainless steel cover 125x125				OSB1COI-125X125
Stainless steel cover 125x150				OSB1COI-125X150
Stainless steel cover 125x200				OSB1COI-125X200
Stainless steel cover 150x150				OSB1COI-150X150
Stainless steel cover 150x200				OSB1COI-150X200
Stainless steel cover 150x250				OSB1COI-150X250
Sheathing insulation				OGE1COB
Platform stand H 200 mm		CAVALLETTO		CAVALLETTO-I
Display floor stand		OGE0COP		OGE1CLE

PVS/A TYPE 4 - CELL PLATFORMS TO BE BURIED FLUSH WITH THE FLOOR, OPENABLE VERSION

Openable
version



Main features:

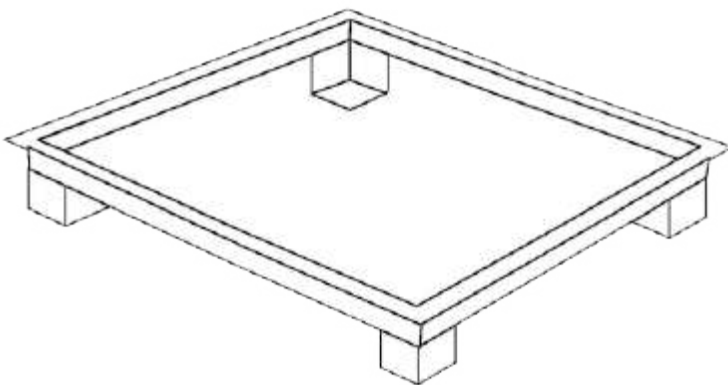
- Single-structure weighing platform in stainless steel (with circle polished plate) for floor installation.
- Weight measurement by 4 stainless steel shear beam load cells, approved up to 4000 divisions and with IP69 protection.
- Shielded 5m display connection cable.
- Self-centring articulated feet for each load cell and spirit level.
- Junction box with card, connectors and IP68 protection.
- Stainless steel frame for foundation pit with 4 support leg corners

Available versions with approved load cells up to 4000 divisions

Model	Load and DIV		1° Range		Inox code
	Max kg	e g	Max kg*	e g*	
125x125	1500	500	600	200	PSA21T5-125X125
125x150	1500	500	600	200	PSA21T5-125X150
125x200	1500	500	600	200	PSA21T5-125X200
150x150	1500	500	600	200	PSA21T5-150X150
150x200	1500	500	600	200	PSA21T5-150X200

Special sizes and capacities **Price on request**

PVS/A 4-cell openable platform accessories	Inox code
Frame 125x125	ACB08401125X125
Frame 125x150	ACB08421125X150
Frame 125x200	ACB08441125X200
Frame 150x150	ACB08461150X150
Frame 150x200	ACB0841150X200
Stainless steel piston application (each)	OGE1PTI
Sheathing insulation	OGE1COB
Display floor stand	OGE1CLE



Foundation pit frame



Hand truck for platform stand
h 200 mm

PVM/A/B TYPE 4 - CELL PLATFORMS, SHOCKPROOF



Main features:

- Single-structure weighing platform in painted steel (with smooth plate) or stainless steel (with circle polished plate) for PVM/A floor installation or PVM/B above floor installation.
- Weight measurement by 4 stainless steel shear beam load cells, approved up to 4000 divisions and with IP67 protection (for the painted steel platform) or with IP69 protection (for the stainless steel platform).
- The cells rest on four ball supports supported by a special shock absorber to allow the platform to swing vertically and laterally.
- Shielded 5m display connection cable.
- Self-centring articulated feet for each load cell and spirit level.
- Junction box with card, connectors and IP68 protection.
- Frame for foundation pit with 4 support leg corners (optional)

Available versions with approved load cells up to 4000 divisions

Model	Load and DIV		1° Range		Painted code	Inox code
	Max kg	e g	Max kg*	e g*		
80x80	150	50	60	20	PMA0150-080X080	PMA1150-080X080
	300	100	150	50	PMA0300-080X080	PMA1300-080X080
	600	200	300	100	PMA0600-080X080	PMA1600-080X080
100x100	300	100	150	50	PMA0300-100X100	PMA1300-100X100
	600	200	300	100	PMA0600-100X100	PMA1600-100X100
	1500	500	600	200	PMA01T5-100X100	PMA11T5-100X100
100x125	600	200	300	100	PMA0600-100X125	PMA1600-100X125
	1500	500	600	200	PMA01T5-100X125	PMA11T5-100X125
	3000	1000	1500	500	PMA03T0-100X125	PMA13T0-100X125
125x125	600	200	300	100	PMA0600-125X125	PMA1600-125X125
	1500	500	600	200	PMA01T5-125X125	PMA11T5-125X125
	3000	1000	1500	500	PMA03T0-125X125	PMA13T0-125X125
125x150	600	200	300	100	PMA0600-125X150	PMA1600-125X150
	1500	500	600	200	PMA01T5-125X150	PMA11T5-125X150
	3000	1000	1500	500	PMA03T0-125X150	PMA13T0-125X150
	6000	2000	3000	1000	PMA06T0-125X150	PMA16T0-125X150
125x200	600	200	300	100	PMA0600-125X200	PMA1600-125X200
	1500	500	600	200	PMA01T5-125X200	PMA11T5-125X200
	3000	1000	1500	500	PMA03T0-125X200	PMA13T0-125X200
	6000	2000	3000	1000	PMA06T0-125X200	PMA16T0-125X200
150x150	600	200	300	100	PMA0600-150X150	PMA1600-150X150
	1500	500	600	200	PMA01T5-150X150	PMA11T5-150X150
	3000	1000	1500	500	PMA03T0-150X150	PMA13T0-150X150
	6000	2000	3000	1000	PMA06T0-150X150	PMA16T0-150X150
150x200	600	200	300	100	PMA0600-150X200	PMA1600-150X200
	1500	500	600	200	PMA01T5-150X200	PMA11T5-150X200
	3000	1000	1500	500	PMA03T0-150X200	PMA13T0-150X200
	6000	2000	3000	1000	PMA06T0-150X200	PMA16T0-150X200
150x250	1500	500	600	200	PMA01T5-150X250	PMA11T5-150X250
	3000	1000	1500	500	PMA03T0-150X250	PMA13T0-150X250
	6000	2000	3000	1000	PMA06T0-150X250	PMA16T0-150X250

Special sizes and capacities **Price on request**

Additional cost for removable screwed plate **Price on request**

NOTE: A – Floor version **B** – Above floor version

PVS/A/B 4-cell platform accessories	Painted code	Inox code
Frame 80x80	ACB0498N080X080	ACB0498I080X080
Frame 100x100	ACB0500N100X100	ACB0500I100X100
Frame 100x125	ACB0504N100X125	ACB0504I100X125
Frame 125x125	ACB0507N125X125	ACB0507I125X125
Frame 125x150 Max 3000 kg	ACB0510N125X150	ACB0510I125X150
Frame 125x150 Max 6000 kg	ACB0518N125X150	ACB0518I125X150
Frame 125x200 Max 3000 kg	ACB0521N125X200	ACB0521I125X200
Frame 125x200 Max 6000 kg	ACB0524N125X200	ACB0524I125X200
Frame 150x150 Max 3000 kg	ACB0527N150X150	ACB0527I150X150
Frame 150x150 Max 6000 kg	ACB0530N150X150	ACB0530I150X150
Frame 150x200 Max 1000 kg	ACB0533N150X200	ACB0533I150X200
Frame 150x200 Max 3000 kg	ACB0535N150X200	ACB0535I150X200
Frame 150x200 Max 6000 kg	ACB0539N150X200	ACB0539I150X200
Frame 150x250 Max 3000 kg	ACB0264N150X250	ACB0264I150X250
Frame 150x250 Max 6000 kg	ACB0578N150X250	ACB0578I150X250
Legs on counterframe up to 30 cm	OMA0ZCT	OMA1ZCT
Legs on counterframe + fork guide	OMA0ZCG	OMA1ZCG
Sheathing insulation		OGE1COB
Display floor stand	OGE0COP	OGE1CLE

PLP - TYPE 4 - CELL LOW - PROFILE PLATFORMS



Main features:

- Single-structure weighing platform in painted steel (with smooth plate) or stainless steel (with circle polished plate) for installation above floor.
- Weight measurement by 4 stainless steel shear beam load cells, approved up to 4000 divisions and with IP67 protection (for the painted steel platform) or with IP69 protection (for the stainless steel platform).
- Shielded 5m display connection cable.
- Self-centring articulated feet for each load cell and spirit level.
- Junction box with card, connectors and IP68 protection.
- 2 gently sloping ramps of approx. 60 cm in length ideal for weighing trolleys or pallet trucks.

Available versions with approved load cells up to 4000 divisions

Model	Load and DIV		1° Range			Painted code		Inox code
	Max kg	e g	Max kg*	e g*				
80x80	150	50	60	20		PLP0150-080X080		PLP1150-080X080
	300	100	150	50		PLP0300-080X080		PLP1300-080X080
	600	200	300	100		PLP0600-080X080		PLP1600-080X080
100x100	300	100	150	50		PLP0300-100X100		PLP1300-100X100
	600	200	300	100		PLP0600-100X100		PLP1600-100X100
	1500	500	600	200		PLP01T5-100X100		PLP11T5-100X100
100x125	300	100	150	50		PLP0300-100X125		PLP1300-100X125
	600	200	300	100		PLP0600-100X125		PLP1600-100X125
	1500	500	600	200		PLP01T5-100X125		PLP11T5-100X125
125x125	300	100	150	50		PLP0300-125X125		PLP1300-125X125
	600	200	300	100		PLP0600-125X125		PLP1600-125X125
	1500	500	600	200		PLP01T5-125X125		PLP11T5-125X125
125x150	300	100	150	50		PLP0300-125X150		PLP1300-125X150
	600	200	300	100		PLP0600-125X150		PLP1600-125X150
	1500	500	600	200		PLP01T5-125X150		PLP11T5-125X150
125x200	300	100	150	50		PLP0300-125X200		PLP1300-125X200
	600	200	300	100		PLP0600-125X200		PLP1600-125X200
	1500	500	600	200		PLP01T5-125X200		PLP11T5-125X200
150x150	600	200	300	100		PLP0600-150X150		PLP1600-150X150
	1500	500	600	200		PLP01T5-150X150		PLP11T5-150X150
150x200	600	200	300	100		PLP0600-150X200		PLP1600-150X200
	1500	500	600	200		PLP01T5-150X200		PLP11T5-150X200

Special sizes and capacities **Price on request**

PLP 4-cell platform accessories	Painted code		Inox code
Deduction of an 80x60 ramp	OLP0RMP-80X60		OLP1RMP-080X60
Deduction of an 100x60 ramp	OLP0RMP-100X60		OLP1RMP-100X60
Deduction of an 125x60 ramp	OLP0RMP-125X60		OLP1RMP-125X60
Deduction of an 150x60 ramp	OLP0RMP-150X60		OLP1RMP-150X60
Sheathing insulation			OGE1COB
Display floor stand	OGE0COP		OGE1CLE

PFE IRON - WEIGHING 4 - CELL PLATFORMS



Main features:

- Single-structure weighing platform in painted steel.
- Weight measurement by 4 stainless steel shear beam load cells, approved up to 4000 divisions and with IP67 protection.
- The cells rest on four ball supports supported by a special shock absorber to allow the platform to swing vertically and laterally.
- Shielded 5m display connection cable.
- Self-centring articulated feet for each load cell and spirit level.
- Junction box with card, connectors and IP68 protection.
- Equipped with 4 legs that bring the loading platform to a height of approx. 70 cm.
- Extendable extension arms (for iron bars) with a length of approx. 70 cm are available on request.

Available versions with approved load cells up to 4000 divisions

Model	Load and DIV		1° Range		Painted code
	Max kg	e g	Max kg*	e g*	
100x200	3000	1	1500	0,5	PFE03T0-100X200 PFE06T0-100X200
	6000	2	3000	1	
125x200	3000	1	1500	0,5	PFE03T0-125X200 PFE06T0-125X200
	6000	2	3000	1	
100x300	3000	1	1500	0,5	PFE03T0-100X300 PFE06T0-100X300
	6000	2	3000	1	
125x300	3000	1	1500	0,5	PFE03T0-125X300 PFE06T0-125X300
	6000	2	3000	1	
150x300	3000	1	1500	0,5	PFE03T0-150X300 PFE06T0-150X300
	6000	2	3000	1	

Special sizes and capacities **Price on request**

PFE 4-cell platform accessories

	Painted code
Extendable arms up to 3000kg	OFE0B3T
Extendable arms up to 6000kg	OFE0B6T
Display floor stand	OGE0COP

OVERHEAD WEIGHBRIDGE/BME WALL SCALE



Overhead weighbridge main features:

- The overhead weighbridge is inserted into the overhead rail transport lines (monorail) used in slaughterhouses.
- The rail is interrupted in the weighing area and the loose part is fixed to the supporting structure, so that each hook can be weighed without interrupting transport.
- The body of the overhead weighbridge is fixed above the structure supporting the rail and inside are the load cells to which the rail is attached by 4 adjustable tie rods.
- Weight measurement by stainless steel "off centre" load cells, approved up to 4000 divisions and with IP67 protection.
- Two versions available: single cell of maximum 30cm and double cell of maximum 60cm.
- Shielded 5m display connection cable.
- Stainless steel FLY MINI model weight display with bracket and battery (optional).



BME wall scale main features:

- The wall scale has a galvanised steel frame and a stainless steel cover.
- It has a folding platform with dimensions of 55x42cm and is prepared for wall mounting.
- On the top there is a slightly protruding hook where the material to be weighed can be hung.
- Weight detection by a stainless steel "off centre" load cell, approved up to 4000 divisions and with IP67 protection.
- Shielded 5m display connection cable.
- Stainless steel FLY MINI model weight display with bracket and battery (optional).

Model	Load and DIV		1° Range		Inox code
	Max kg	e g	Max kg*	e g*	
Single cell weighbridge 30 cm max	150	50	60	20	SAM1150 SAM1300
	300	100	150	50	
Double cell weighbridge 60 cm max	300	100	150	50	SAD1300 SAD1600 SAD11T5
	600	200	300	100	
	1500	500	600	200	
BME wall scale	150	50	60	20	SME1150 SME1300
	300	100	150	50	

NOTE: Stainless steel FLY MINI model weight display + € 600,00

Accessories and options on request

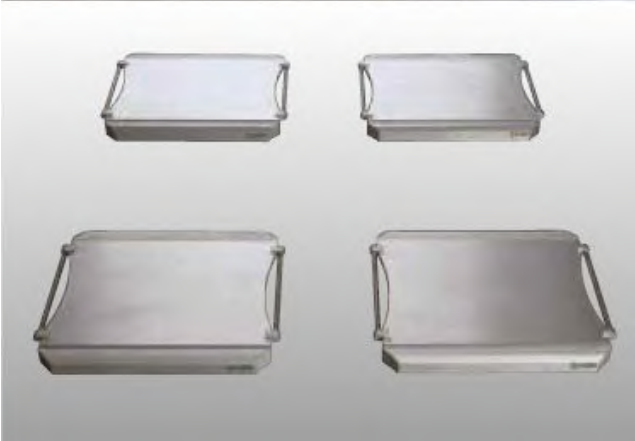
Sheathing insulation

Code

OGE1COB



WHEEL WEIGHING PLATFORMS



Main features:

- Platforms designed for mobile weighing stations for vehicles with variable dimensions (cars, vans, trucks, etc.).
- Single aluminium platform structure with built-in access ramps and handle for transport.
- Special vulcanised non-slip rubber applied underneath each platform to ensure maximum grip on all surfaces.
- Weight measurement by 4 stainless steel shear beam load cells, approved up to 4000 divisions and with IP69 protection.
- Weight: approx. 23kg (platform 530x645x53mm) and 42kg (platform 965x607x61mm).
- 10m cable with connector to plug the platform to the weight indicator.
- Radio frequency module (optional) including: a transmitter with a battery pack for each platform and a receiver to be placed on the weight display.

Available versions	Dimensions	Load Max kg	Div. Kg	Code
1500pa	530x645x53	1500	0,5	PGI01T5 - 530X645
3000pa	530x645x53	3000	1	PGI03T0 - 530X645
6000pa	530x645x53	6000	2	PGI06T0 - 530X645
10000pa	530x645x53	10000	5	PGI010T-530X645
10000pa	965x607x61	10000	5	PGI010T-965X607

Platforms connectable with 4 platforms version TSC viewer

Radio Frequency Platform Connection Module - Indicator	Code
RF868/RS232-RS485-USB waterproof radio transceiver with antenna to be mounted on display. - Internal rechargeable batteries (autonomy 200 h)	OGEO-RF868
Weight radio transmitter card mod. S178 with antenna and 4 stylus ni-mh 2500mah to be mounted on platform	OGEO-RF868



SPECIAL PLATFORMS



BIG BAG SUPPORT FRAMEWORK

- The support structure for the special "big bag" cases is made of painted steel.



IDLE ROLLER

- The idle roller can be positioned above a single-cell platform.
- Versions available: galvanised or stainless steel.



ANIMAL WEIGHING PLATFORM

- The animal weighing platform is made of a containment cage and a non-slip embossed metal sheet loading surface.
- No. 2 opening gates for entry and exit of the animals.
- The height of the cage is 1500 mm
- Weight measurement by 4 shear beam load cells, approved up to 4000 divisions and with IP67 protection.
- Versions available: painted steel and galvanised (stainless steel upon request)

BIG BAG SUPPORT FRAMEWORK

Support framework for Big Bag in painted steel

Code

SOSTEGNO

Roller

400x400

600x600

800x800

Galvanised code

Roller40Z

Roller60Z

Roller80Z

Inox code

Roller40I

Roller60I

Roller80I

For special versions **Price on request**

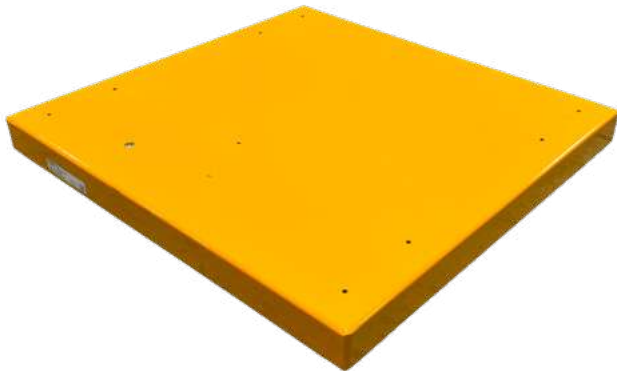
Animal weighing platform

with containment cage and non-slip embossed metal sheet loading surface

Dimensions	Load Max kg	Div. Kg	Iron code	Galvanised code	Inox code
2000x1200	1500	500	PANIMC1T5 - 200X1	PANIMZ1T5 - 200X1	PANIMI1T5 - 200X1

Per versione in acciaio inox: **Price on request**

SPECIAL PLATFORMS



PLATFORM PAINTED WITH SPECIFIC COLOUR



PAINTED PLATFORM FOR PALLET WRAPPING



FRAME/STAND TO RAISE PLATFORMS 25 - 30 CM OFF THE GROUND WEIGHING BARS

(available in painted steel or stainless steel)



TROLLEY

(available in painted steel or stainless steel)



CASSETTE WEIGHERS



COIL WEIGHING PLATFORM

FLY E2 DISPLAY in abs



Functional characteristics:

- Automatic, manual and cumulative tare device.
- Energy autonomy approx. 6 hours.
- Battery recharge time approx. 8 hours (recharging takes place even when the instrument is switched off).
- Programmable auto switch-off device if instrument not in use.
- Connection to personal computer.

Technical features:

- ABS plastic case with bracket for wall mounting.
- 20 mm red LED display.
- 5-switch membrane keypad.
- 1 RS-232 serial interface.
- Optional 6 V - 3.2Ah rechargeable battery.

FLY E2 display available versions

FLY E2

Code

VFLY/E2

Accessories and options on request

Internal rechargeable battery 6 V - 3.2Ah

Code

ABA06V3.2

SC -1/60 STAINLESS steel display



Technical features:

- Stainless steel case
- Red LED 60mm digit height weight indicator
- 4-switch keypad
- 1 RS-232 serial interface
- Automatic tare weight
- Approved up to 6000 divisions
- Displayable divisions 30,000 max
- Supply voltage 220 V AC

SC-1 / 60 display available versions

SC-1 / 60 - basic version

SC-1 / 60 - with internal battery

Code

VS6T

VS6R



FLY/1 DISPLAY in abs

Functional characteristics:

- Automatic tare and manual tare device
- Case: ABS plastic with stainless steel bracket
- Tare locking/unlocking device
- Battery charge level indicator device
- Counting functions
- 9 storable tares
- 99 codes with assignable PMU and management of totalisations
- Weighing printout with final totalisation, printing of totals per code
- Weighing storage and subsequent download to PC
- Energy autonomy approx. 10 hours
- Battery recharge time approx. 12 hours (recharge also when the instrument is switched off)
- Programmable auto switch-off device if the instrument is not used
- Connection to personal computers, printers, repeaters

Technical features:

- Instrument power supply: 6 V dc battery
- External power supply: 230 V ac 7 V dc
- Max. absorption: 8 W
- Operating temperature: -10°C to +40°C (max. humidity 85% non-condensing)
- Storage temperature: -10°C ÷ +50°C
- Protection: IP67 version available
- Display: 6 (max) digit red LEDs with 7 segments (h 20 mm)
- Indication leds: 4 (max) red leds 5 mm diameter
- Keypad: numeric with 17 keys
- Switching on/off: from keypad
- Battery control: battery charge status display, with automatic switch-off
- Overall dimensions: 210 x 170 x 50 mm
- Load cell power supply: 5 V dc / 90 mA (max 6 load cells 350 Ω), short-circuit protected
- Input sensitivity: 0.5 mv/div

FLY/1 display available versions

FLY/1 STANDARD with internal battery

Code

VFLY/1-S

FLY/1 IP67 with internal battery

VFLY/1-67

Accessories and options on request

12 V ac battery box with built-in charger

Code

OGE0B07

Display floor stand

OGE0COP

Ethernet 10/100 base TCP/IPSTAK interface

ASE5076-ETH

Weight/tare switch

OGE0BUTT-P/T

Analogue card 0-10 V / 4 - 20 Ma

ASE7002/04M20

Set point 1 in / 2 out (two weight thresholds setting)

ASE8001

Profibus DP output

ASE-PROFIBUS



Stainless steel FLY MINI display

Functional characteristics:

- Automatic tare and manual tare device
- Case: stainless steel with stainless steel bracket
- Tare locking/unlocking device
- Battery charge level indicator device
- Counting functions
- 9 storable tares
- 99 codes with assignable PMU and management of totalisations
- Weighing printout with final totalisation, printing of totals per code
- Weighing storage and subsequent download to PC
- Energy autonomy approx. 10 hours
- Battery recharge time approx. 12 hours (recharge also when the instrument is switched off)
- Programmable auto switch-off device if the instrument is not used
- Connection to personal computers, printers, repeaters

Technical features:

- Instrument power supply: 6 V dc battery
- External power supply: 230 V ac / 7 V dc
- Max. absorption: 8 W
- Operating temperature: -10°C to +40°C (max. humidity 85% non-condensing)
- Storage temperature: -10°C ÷ +50°C
- Protection: IP67 version available
- Display: 6 (max) digit red LEDs with 7 segments (h 20 mm)
- Indication leds: 4 (max) red leds 5 mm diameter
- Keypad: numeric with 17 keys
- Switching on/off: from keypad
- Battery control: battery charge status display, with automatic switch-off
- Overall dimensions: 210 x 170 x 50 mm
- Load cell power supply: 5 V dc / 90 mA (max 6 load cells 350 Ω), short-circuit protected
- Input sensitivity: 0.5 mv/div
- Internal resolution: 24 bits
- Serial port: RS232c
- Max. cable length: 15m (RS232c)
- Standard protocols: weight transmission
- Baud rate: 9600 bit./sec.

FLY/1 MINI DISPLAY AVAILABLE VERSIONS

	Code
FLY/1 MINI with internal battery	VFLP
FLY/1 MINI IP67 with internal battery	VFLP

Accessories and options on request

	Code
12 V ac battery box with built-in charger	OGE0B07
Display floor stand	OGE0COP
Ethernet 10/100 base TCP/IPSTAK interface	ASE5076-ETH
Weight/tare switch	OGE0BUTT-P/T
Analogue card 0-10 V / 4 - 20 Ma	ASE7002/04M20
Set point 1 in / 2 out (two weight thresholds setting)	ASE8001
Profibus DP output	ASE-PROFIBUS
Profinet output	ASE-PROFINET

Stainless steel FLY TN-IP67 DISPLAY



Functional characteristics:

- Automatic tare and manual tare device
- Case: stainless steel
- Tare locking/unlocking device
- Battery charge level indicator device
- Counting functions
- 9 storable tares
- 99 codes with assignable PMU and management of totalisations
- Weighing printout with final totalisation, printing of totals per code
- Weighing storage and subsequent download to PC
- Energy autonomy approx. 10 hours
- Battery recharge time approx. 12 hours (recharge also when the instrument is switched off)
- Programmable auto switch-off device if the instrument is not used
- Connection to personal computers, printers, repeaters

Technical features:

- Instrument power supply: 6 V dc battery
- External power supply: 230 V ac / 7 V dc
- Max. absorption: 8 W
- Operating temperature: -10°C to +40°C (max. humidity 85% non-condensing)
- Storage temperature: -10°C ÷ +50°C
- Protection: IP67 version available
- Display: 6 (max) digit red LEDs with 7 segments (h 20 mm)
- Indication leds: 4 (max) red leds 5 mm diameter
- Keypad: numeric with 17 keys
- Switching on/off: from keypad
- Battery control: battery charge status display, with automatic switch-off
- Overall dimensions: 210 x 170 x 50 mm
- Load cell power supply: 5 V dc / 90 mA (max 6 load cells 350 Ω), short-circuit protected
- Input sensitivity: 0.5 mv/div
- Internal resolution: 24 bits
- Serial port: RS232c
- Max. cable length: 15m (RS232c)
- Standard protocols: weight transmission
- Baud rate: 9600 bit./sec.

FLY TN-IP67 display available versions

FLY TN-IP67 with internal battery

Code

VFLY

Accessories and options on request

12 V ac battery box with built-in charger

Code

OGE0B07

Display floor stand

OGE0COP

Ethernet 10/100 base TCP/IPSTAK interface

ASE5076-ETH

Weight/tare switch

OGE0BUTT-P/T

Analogue card 0-10 V / 4 - 20 Ma

ASE7002/04M20

Set point 1 in / 2 out (two weight thresholds setting)

ASE8001

Profibus DP output

ASE-PROFIBUS

Second visualisation (customer side)

ASE7001/C6

FLY PLUS DISPLAY



FLY PLUS (ABS)



FLY PLUS (INOX)

Functional characteristics:

- Case: ABS plastic or stainless steel
- Stainless steel bracket for wall mounting
- Self-weighted, manual and cumulative tare
- Tare lock/unlock device
- Battery charge level indicator device
- Counting function
- 20 storable tares
- 200 codes with assignable PMU and totalisation management
- 4 programmable direct codes
- Weighing printout with final totalisation, printing of totals per code
- Weighing storage and subsequent download to PC
- Energy autonomy approx. 35 hours
- Battery recharge time approx. 12 hours (recharge also when the instrument is switched off)
- Programmable auto switch-off device if the instrument is not used
- Connection to personal computers, printers, repeaters
- 5 Languages to choose from
- Versions: weighing and counting, bridge weighing, thresholds and dosing

Technical features:

- Instrument power supply: 6 V dc battery
- External power supply: 230 V ac / 7 V dc
- Max. absorption: 8 W
- Operating temperature: -10°C to +40°C (max. humidity 85% non-condensing)
- Storage temperature: -10°C to +50°C
- Protection: IP67 version available
- Display: CUSTOM LCD
- Keypad: numeric and alphanumeric with 32 keys
- Switching on/off: from keypad
- Battery control: battery charge status display, with automatic switch-off
- Overall dimensions: 215 x 175 x 50 mm
- Load cell power supply: 5 V dc / 90 mA (max 6 load cells 350 Ω), short-circuit protected
- Input sensitivity: 0.5 mv/div
- Internal resolution: 24 bits
- Serial port: RS232c
- Max. cable length: 15m (RS232c)
- Standard protocols: weight transmission
- Baud rate: 9600 bit./sec.

FLY PLUS display available versions	Code
FLY PLUS LCD (ABS) base version	VFLY/P
FLY PLUS LCD (ABS) IP67 version	VFLY/P
FLY PLUS LCD (ABS) double scale	VFLY/P2
FLY PLUS LCD (INOX) base version	VFLYP-LCD
FLY PLUS LCD (INOX) IP67 version	VFLYP-LCD
FLY PLUS LCD (INOX) double scale	VFLYP-LCD/2

Accessories and options on request	Code
12 V ac battery box with built-in charger	OGE0B07
Display floor stand	OGE0COP
Additional RS-232 serial interface	ACVCABL-SERV025
Additional RS-485 serial interface	OWM0485
Analogue card 0-10V / 4-20Ma	OWMPSCH
Ethernet 10/100 base TCP/IPSTAK interface	ASE5076-ETH
I/O board 3 in / 8 out	ASE8001
Weight/tare switch	OGE0BUTT-P/T
Profibus DP output	ASE-PROFIBUS
Normal personal computer keyboard	OCS5-PC
3-light indicator for visual checkweighing signals	OGE0-TL
Alibi memory (fiscal memory)	ASE8004-MICRO
Kit of 2 ENTER/TARA remote controls + 433 mhz receiver	ATCOM-FLY/P



Stainless steel ISCALE DISPLAY

Functional characteristics:

- Connection of 2 platforms with analogue or digital cells
- Independent display of weight and tare value
- Subtraction of self-weighted, manual or programd tare (also from serial)
- Multiplication of manual or programd tares
- Totalization of weighing on two levels (partial and general)
- Totalisation by article of weight, number of pieces and packages
- Management and printing of progressive number and possibility of modification
- Piece counter function with variable number sampling (also from serial)
- Sampling through weight reading from serial analytical scale
- Manual setting of average unit weight (also from serial)
- Volume calculation function in litres by specific weight
- Setting the number of packages for each weighing
- Direct setting 4 alphanumeric descriptions 20 characters
- Customisation of the 4 associated messages of alphanumeric descriptions
- Article selection from an internal archive via numeric code (0 to 199)
- Printing of the receipt with all the data manageable on both internal and external printer
- Copy of the last weigh
- Cancellation of last weigh
- Printing of partial and general totals and per article
- Programming of article archive (200/1000) with description (16 characters), average unit weight and tare weight
- Programming of articles and totals reading also from serial line
- Programming of tare archive (20)
- Customisation of receipt header (5 lines)
- Selection of print type (single or cumulative)
- Data transmission on serial line (automatic, continuous, on request)
- Selection of external printer type (continuous roll, tag or label)
- Connection to serial weight repeater
- Connection to external PS/2 keyboard

Bridge weighing/vehicle weighing version

- Two-stage vehicle weighing (maximum 200 simultaneously)
- Vehicle recognition with alphanumeric number plate or sequential number
- Weighing with programd vehicle tare and licence plate number
- Weighing with manual tare
- Weighing of vehicles in dual phase with sum of individual axles
- A, B, A+B operation
- Connection with card printer

Dosing version - setpoint

- Management of 3 inputs and 8 relay outputs
- Setting 8 independent weight thresholds (also in pieces)
- Dosing management at load on 16 single products also at double speed
- Printing of achieved sets and total
- Remote activation of tare functions or functions of start-stop
- Remote activation of the storage and printing
- Programming of 16 products with 16-character description
- N.50 recipes



Technical features:

- Case: stainless steel
- Operating temperature: -10°C to +40°C with maximum humidity 95% n.c.
- Power supply: 28 V DC
- Power transformer: 2 m with two-pin plug and earthing 10A 250V
- Power consumption: 25W-100mA (standard)
- Cell power supply: 5 V DC
- Converter: 24bits
- Display: CUSTOM LCD
- Overall dimensions : 245 x 230 x 150 mm
- Connectable platforms: 2
- Interfaces: No. 2 RS232 - No. 1 PS/2 for connection external keyboard
- Approved 10,000 divisions with 3 scale ranges
- Internal resolution 100,000 divisions
- Keyboard: numeric and alphanumeric with 45 keys
- Energy autonomy approx. 10 hours
- Battery recharge time approx. 12 hours (recharging takes place even when the instrument is switched off)
- Programmable auto switch-off device if instrument not in use
- Connection to personal computers, printers, repeaters
- Choice of languages 5
- Max. cable length: 15m (RS232c)
- Standard protocols: weight transmission
- Baud rate: 9600 bit./sec.

ISCALE display available versions

ISCALE STANDARD double scale version

Code

VISS

ACCESSORIES AND OPTIONS ON REQUEST

12 V ac battery box with built-in charger

OGE0B07

Display floor stand

OGE0COP

Additional RS-485 serial interface

OWM0485

Ethernet 10/100 base TCP/IPSTAK interface

ASE5076-ETH

Weight/tare switch

OGE0BUTT-P/T

Removable keyboard kit

AASKIT-TA-IS

Dosing version set point 3 in - 8 out

ASE5072/1RL8

Analogue output 0-10 V / 4-20 Ma

ASE5072/14M20

Wall bracket

AND186108102

Internal rechargeable batteries 24V dc -2,2Ah

ABA06V12

Normal personal computer keyboard

OCS5-PC

3-light indicator for visual checkweighing signals

OGE0-TL

USB Weighing Storage Device

S186S194

Alibi Memory

ASE8004-MICRO

Kit 2 ENTER/TARA remote controls + 433 mhz receiver

ATCOM-IS



Radio Frequency Platform Connection Module - Indicator

RF868/RS232-RS485-USB waterproof radio transceiver with antenna to be mounted on display.
- Internal rechargeable batteries (autonomy 200 h)

OGE0-RF868

Weight radio transmitter card mod. S178 with antenna and 4 stylus ni-mh 2500mah to be mounted on platform

OGE0-RF868

3-light indicator for visual checkweighing sigr and weight/tare switch



Stainless steel ISCALE DISPLAY with printer



ISCALE PROFESSIONAL



ISCALE SPECIAL



**ISCALE STANDARD
WITH FAST 80**

MAIN FEATURES

(see Iscale Standard for details on functionality and technical data)

ISCALE PROFESSIONAL DISPLAY

Weight and Counting Version

- Stainless steel case
- Custom LCD weight indicator
- Built-in thermal printer
- 2 Serial interfaces
- External 28 V power supply or optional internal 24 V batteries
- Self-weighted, manual or programd tare with multiples.
- Counting function
- Settings of 4 / 8 alphanumeric codes
- Storage of 200 articles
- Totalisation by code
- Data transmission to external printer or PC
- Data transmission to weight repeater
- 2 platforms management

Dosing/Setpoint version

- Card 3 inputs / 8 relay outputs
- Setting 6 weight or piece thresholds
- Dosing at load 5 products at double speed

Vehicle / Axle Weighing Version

- Article storage (max. 200)
- Input and output weight storage
- Totalisation by code
- Data transmission to external printer
- Function A, B, A+B

Volumetric version

- Print weight (gross, tare, net)
- Volume print in cubic centimetres
- Printing of 3 dimensions (height, depth and width)

ISCALE DISPLAY SPECIAL

See features of the Iscale Professional model in Vehicle Weighing / Axle Weighing version

- TM-295 tag printer (instead of built-in thermal printer)
- Stainless steel plate for Iscale monoblock DISPLAY and tag printer
- TM-295 tag printer
- 7-needle head
- Print width 66mm
- Minimum tag width 80mm
- Speed 2.3 lps
- Multi-copy printing (chemical paper)
- Serial interface

STANDARD ISCAL DISPLAY WITH FAST 80

- Stainless steel case
- Custom LCD weight indicator
- External 28 V power supply or optional internal 24 V batteries
- 2 RS-232 serial interface
- 2 connectable platforms
- Self-weighted, manual or programd tare
- Counting function
- Setting 4/8 alphanumeric codes
- Storage of 200 articles
- Data transmission to external printer or PC FAST 80 thermal paper printer
- Print speed 230 mm/sec
- Autocutter
- 36/26 characters print line
- Easy loading
- RS232/usb serial connectivity
- Paper roll 80/58 mm 60/100mt
- Communication protocol "esc/pos"
- Compatibility with Epson TMU295 slip printer
- Power supply 230 V 50 HZ - Out: 24 V DC 2.5 A



ISCALE DISPLAYS WITH PRINTER AVAILABLE VERSIONS

	Code
ISCALE PROFESSIONAL double scale	VISP
ISCALE PROFESSIONAL double scale with label printer	VISP-S
ISCALE SPECIAL double scale with tag printer and stainless steel plate	VISS-TM
ISCALE SPECIAL double scale with TM-U220D printer	VISS-SP
ISCALE STANDARD double scale with FAST-80 printer	VISS-EF80-232

Accessories and options on request

	Code
12V ac battery box with built-in charger	OGE0B07
Display floor stand	OGE0COP
Stainless steel Display floor stand	OGE1CLE
Additional RS-485 serial interface	OWM0485
Ethernet 10/100 base TCP/IPSTAK interface	ASE5076-ETH
Weight/tare switch	OGE0BUTT-P/T
Removable keyboard kit	AASKIT-TA-IS
Dosing version set point 3 in - 8 out	ASE5072/1RL8
Analogue output 0-10 V / 4-20 Ma	ASE5072/14M20
Wall bracket	AND186108110
Internal rechargeable batteries 24 V dc -2,2 Ah	ABA06V12
Normal personal computer keyboard	OCS5-PC
3-light indicator for visual checkweighing signals	OGE0-TL
USB Weighing Storage Device	S186S194
Alibi Memory	ASE8004-MICRO
Kit 2 ENTER/TARA remote controls + 433 mhz receiver	ATCOM-IS
Volumetric kit including sensors and wiring (for Iscale Professional)	AASKIT-VOL-IS
RF box I/O board + 2 remote controls (for Iscale Professional with remote printing capability)	



Radio Frequency Platform Connection Module - Indicator

RF868/RS232-RS485-USB waterproof radio transceiver with antenna to be mounted on display.

- Internal rechargeable batteries (autonomy 200 h)

Weight radio transmitter card mod. S178 with antenna and 4 stylus ni-mh 2500mah to be mounted on platform

Code

OGE0-RF868

OGE0-RF868

Iscale professional with remote printing via RF remote control



With this configuration, there is the possibility of remote printing through the use of an RF remote control.

Operation:

The remote control has two buttons, each of which activates a relay in the RF card inside the grey box, connected via a 25-pole port to the I-O card on the iscale. The relay, which is activated when the command is received via RF, activates an input on the I-O and this allows the weighing or tare to be printed out.

TSC TOUCH SCREEN DISPLAYS WITH PRINTER



**TSC E7 DISPLAY
2" PRINTER**

Functional characteristics:

- Colour panel weight indicator with 7 inch and 10 inch touch screen display
- Optimised Linux-based operating system
- Aluminium housing with gasket for flush-mounting
- Resistive touch screen
- Metrological operation, with management of archives of goods, customers, etc.
- Customisable with logos, receipt print layouts, peripheral protocols, through customer-specific configurations
- Selectable multilingual support (up to 5 languages)
- Industrial communication protocols (Modbus RTU) and TCP/IP
- On-board upgradeable software without the use of dedicated tools
- 1000 programmable articles; 1000 customers; 100 tares; 8 direct codes from keyboard
- Available versions: weighing and counting, weigh bridge, vehicle/helicopter weighing; threshold and dosing; volumetric

Options

- Optional Wi-Fi as an alternative to wired LAN
- Expanding number of platforms (ANALOGIC weight converter module)
- Expanding number of platforms (DIGITAL weight converter module)
- E7 (2 inch) for TSC-E7 and E10 (3 inch) for TSc-E10: high-speed, high-resolution thermal cutters (with micro USB and RS232c communication interfaces)

Technical Specifications:

- Input/Output: No. 4 opto-isolated digital outputs (dry contact) on board (max 24 V ac/V dc, 0.1 A each) - No. 4 opto-isolated digital inputs on board (7.5 + 24 V dc PNP) I/O expandable with external modules
- Power supply: Version 6 ~ 30 V dc 10 W max (analogue load cells), Version 12 V dc 15 W max (digital load cells). Power supply via switch
- Metrological characteristics: CE-M (OIML R-76 / EN45501) NAWI approved. Accuracy class: III. N max ≤ 10000 divisions single weighing chamber N1 + N2
- ≤ 10000 divisions multi-range N1 + N2 + N3 ≤ 10000 divisions multi-range
- Operating temperature: - 10°C ~ + 40°C
- Storage temperature: - 20°C ~ + 70°C
- Display: LCD TFT 7" (model TSC-E7) colour backlit 800 x 480 pixels; LCD TFT 10" (model TSC-E10) colour backlit 1024 x 600 pixels. Viewing area dim. 152 x 92 mm
- Keypad: Numeric and alphanumeric (QWERTY) with responsive touch panel integrated in the LCD, with audible feedback (buzzer)
- Communication interfaces: No. 2 Rs232c serial ports, No. 2 Rs485 serial ports, No. 1 Ethernet (LAN), No. 1 USB Host for pen drives, No. 1 USB Device, No. 1 optional WiFi (alternative to wired LAN)
- CPU and memory: ARM Cortex A7@ 528MHz microcontroller. Memory µSD card HC: up to 32GB for archives, optional Alibi memory: 1MB. Clock/calendar with rechargeable buffer battery.
- Weight acquisition: Acquisition of analogue load cells with integrated 2-channel A/D converter up to 16 cells in total. Acquisition of up to 4 weighing channels with additional external modules Acquisition of digital load cells with Rs485 interface
- Analogue cell input: 24 bit integrated A/D converter 2 channels up to 1000 conv./sec.
- Cell power supply: 5 V dc 240 mA (max 16 cells of 350 ohm), short-circuit protected
- Input sensitivity: 0.02 µV min.



**TSC E10 DISPLAY
3" PRINTER**

TSC TOUCH SCREEN DISPLAYS AVAILABLE VERSIONS

	Code
TSC-E7 DIGITAL (with power supply) - double scale	VTSC-D7
TSC-E7 ANALOGUE (with power supply) - double scale	VTSC-A7
TSC-E10 DIGITAL (with power supply) - double scale	VTSC-D10
TSC-E10 ANALOGUE (with power supply) - double scale	VTSC-A10

ACCESSORIES AND OPTIONS ON REQUEST

	Code
E7 PRINTER KIT (2 inches, with power supply)	OPRNAUT224C-63
E10 PRINTER KIT (3 inches, with power supply)	OPRNAUT324C-83
Expanding number of platforms (CALIMERA: ANALOGUE weight converter module)	VCALE-E
4-channel jbox card (not type-approved)	ASEJBOX4
Battery box 24v 20ah	OGE0B17
Wi-Fi (as an alternative to wired LAN)	ASES240
I/O card activation complete with I/O cable	OTSC0-I/O

Example of TSC display functionality

**WEIGHING SYSTEM NO. 2 ANALOGUE/DIGITAL TSC WITH MASTER/SLAVE PROTOCOL
(TAG EXCHANGE) - NO. 1 PLATFORM - NO. 2 TAG PRINTERS (ONE FOR EACH DISPLAY)
+ WEIGHT REPEATER ON DISPLAY 1**



PRINTERS FOR DISPLAYS



IMPACT PRINTER TMU-220D

9-needle head
Roll length 76 mm
Roll diameter 83mm
Speed from 4.7 lps to 6 lps
Multi-copy printing (chemical paper)
Serial interface



TAG PRINTER TM-295

7-needle head
Print width 66mm
minimum tag width 80mm
Speed 2.3 lps
Multi-copy printing (chemical paper)
Serial interface



FAST 80

Print speed 230 mm/sec
Autocutter (life 1 million)
36/26 characters print line
Easy loading
rs232/usb serial connectability
Paper roll 80/58 mm 60/100mt
Communication protocol 'esc/pos
Compatibility with Epson TMU295 Star SP298 slip printer
Power supply 230 V 50 HZ - Out: 24 V DC 2.5 A

PRINTERS FOR DISPLAYS

TM-U220

Code

ETM220

TM- 295

ETM0

Fast 80

EF80-232

BUILT IN DISPLAYS for control and dosage



WIN 13



WIN-TS



EX atex



EX-micro atex

WIN-13 weight display

- Flush-mounted case on self-extinguishing noryl panel
- Connections with removable terminal blocks
- 14mm red LED display
- 14-key membrane keyboard with buzzer
- Automatic or keyboard tare
- 6 relay outputs
- 8 opto-isolated logic inputs
- 2 serial ports

WIN TS model

- Touch screen weight indicator
- LCD display 5.2" graphic, touch screen, high-contrast monochrome
- Management of 2 load cell channels, incremental encoder input, double analogue output and additional analogue input
- 6 integrated outputs and 6 inputs, expandable with external modules
- Built-in communication interfaces Rs232, Rs485, USB, Ethernet, Modbus; Profibus DP with external module
- Ethernet, Modbus; Profibus DP with external module
- Optional USB Host port for USB pen drive connection for data logging, archive uploading and personalisation.

Ex Atex weight display for hazardous areas

- case with inspection window Eex d IIB T4,T3 IP65
- Intrinsically protected barrier Eex ia IIC
- Eex d IIC armoured cable glands
- Weight indicator 6x15mm or 5x15mm + 2x15mm
- 5-switch or 12-switch keyboard
- 1 RS-232 serial interface
- 2 opto-isolated logic inputs (op. 6)
- 2 opto-isolated relay logic outputs (op. 6)
- Subtraction with self-weighted tare also removable
- Subtraction with manual tare
- Setting Setpoints
- Data transmission to computer

Ex-MICRO Atex weight display for hazardous areas

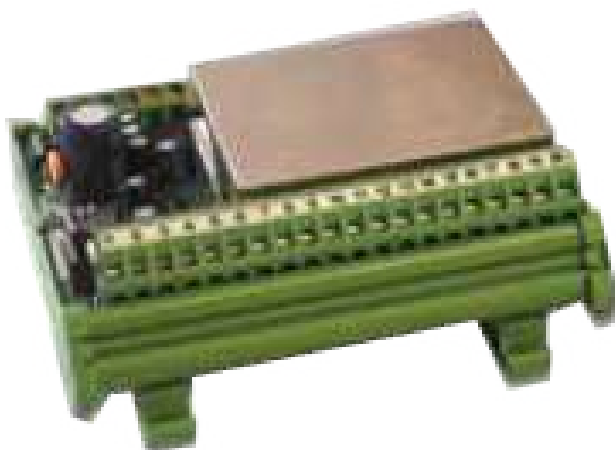
- case with inspection window Eex d IIB T4,T3 IP65
- Intrinsically protected barrier Eex ia IIC
- Eex d IIC armoured cable glands
- 5x22mm weight indicator
- 4-switch keyboard
- 1 RS-232 serial interface
- 2 thresholds (optional)
- Subtraction with self-weighted tare
- Setting Setpoints
- Power supply 12/24 V dc 115/230 V ac

Model	Variants	Code
WIN-13 ¹	Thresholds	VW1S-S
WIN-13 ¹	Dosage	VW1S-D
	Thresholds (Analogue version)	VW1A-S
	Dosing (Analogue version)	VW1A-D
WIN-TS	Base	VTSB
	Eight thresholds	VTSS8
	Dosage 5 components	VTSD5
	Dosage 13 components	VTSD13
	Dosage 21 components	VTSD21
EX Atex ¹	Two Thresholds	VEXQ
WIN-13 ¹	Six Thresholds	VEXS
EX-MICRO Atex		VEMP

¹ Metrologically approved instruments

Accessories		Code
8 Relay Module	WIN-13	ASES097
Fiscal memory	WIN-13	ASES120
RS - 232 / BCD module	WIN-13	ASES039
Analogue card 0-10V / 4-20mA	WIN-13	OW10SCH
IP55 abs case for wall mounting	WIN-13	OW10C55
Impact printer complete with feeder	WIN-13	OW10EIC
Ringtone	WIN-13	OW10BZZ
Desktop case for display and printer	WIN-13	OW10TAS
Analogue output 0-10 V DC / 0-20 mA / 4-20mA	WIN-TS	ASES117
Second load cell input	WIN-TS	ASES096
COM 3 / 4	WIN-TS	ASES089
Intrinsically protected load cell barrier	WIN-13/TS	OGE0BAR

WEIGHT TRANSMITTER AND MULTIFUNCTION WEIGHT INDICATOR



**WEIGHT TRANSMITTER
SERIES AWT20L**



WIN 9

AWT20L series weight transmitter

Weight transmitter with a choice of 0-20 mA, 4-20 mA, 0-10 V dc or +/- 5 V dc analogue output. Suitable for mounting on the rear panel or in a watertight box on an omega bar. Normally used with 12-bit analogue/digital cards installed on a PLC

Technical features:

- Analogue filter to dampen weight fluctuations via one-turn adjustment screw
- Dimensions 113 x 93 mm, height 60 mm
- Coarse zero via 4 miniature switches from -2.4 to 17 mV
- Coarse full-scale via 4 mini-switches from 3.5 to 24 mV
- Zero fine by means of a 10-turn potentiometer, 10% of range
- Fine scale via 10-turn potentiometer, 10% of range
- Power supply 20 to 28 V dc - Power consumption 6V A.
- Accuracy 0.25% of full scale F.S.
- Repeatability 0.01% F.S.
- Temperature stability 0.01% F.S. /10°C
- Operating temperature -10 to + 50°C

I/O Section:

- Measuring range 3.5 to 24 mV
- Cell power supply 10 V dc
- Connection of up to max. 6 load cells with 350 Ohm input resistance.
- Choice of 0 - 20 mA , 4-20mA or 0-10 V analogue output. Alternatively +/-5 V dc output (AWT20L-5 model only)

WEIGHT TRANSMITTER VERSIONS AVAILABLE

Standard version with optional 0-20 mA, 4-20 mA or 0-10 V dc output
Standard version with +/- 5 V dc output

Code

VAWT20L
VAWT20L-5

Weight indicator WIN 9

Technical features:

- Power supply 24 V DC \pm 15%
- Max. power consumption 5 W
- Insulation Class II
- Installation category Cat. II
- Operating temperature -10°C \square +40°C (max. humidity 85% non-condensing)
- Storage temperature -20°C \square +50°C
- 6 digit red LED 7-segment numerical weight display (h 14 mm)
- Five 3 mm indicator LEDs
- Keyboard 4 mechanical keys
- Overall dimensions 96 mm x 48 mm x120 mm (lxhxp)
- Flush-mounted on panel (drilling template 91x44 mm)
- Housing material Noryl self-extinguishing (UL 94 V1)
- Front protection rating IP54
- Removable screw terminal connections pitch 5.08.
- Load cell power supply 5 V DC / 90mA (max. 6 cells of 350W in parallel) short-circuit protected.
- Input sensitivity 0.02 mV min.
- Linearity < 0.01% of full scale
- Temperature drift < 0.001% of full scale / °C
- 24-bit internal resolution
- Weight resolution displayed up to 60,000 divisions on the payload
- Measuring range -3.9 mV/V to +3.9 mV/V
- Acquisition frequency pes 6 Hz - 25 Hz
- Digital filter selectable 0.1 Hz - 25 Hz
- Decimal number weight 0 to 3 decimal places
- Zero and full scale calibration automatic (theoretical) or executable via keyboard.
- Logic outputs 2 opto-isolated (dry contact) max. 24V dc / 60 mA each.
- Logic inputs 2 opto-isolated 24 V DC PNP (external power supply)
- Serial port (No. 2) Rs232c / Rs422 / Rs485 half duplex.
 - Maximum cable length 15m (Rs232c) and 1000m (Rs422 and Rs485)
 - Serial protocols ASCII, Modbus
 - Baud rate 2400, 9600, 19200, 38400, 115000 selectable
- Program code memory 128 Kbytes FLASH reproducible on board by RS232
- Data memory 4 Kbytes
- Optional Analogue Output Voltage: 0÷10 V / 0÷5 V
 - Current: 0÷20 mA / 4÷20 mA
 - 16 bits resolution
 - Digital keyboard calibration
 - Impedances Voltage: minimum 10KW Current: max 300W
 - Linearity < 0.012 % of full scale
 - Temperature drift < 0.001% of full scale / °C
- Compliance with EN50081-1, EN50082-2, EN61010-1

WEIGHT INDICATOR WIN 9

Standard version

Code

VW09



WIN 3



WIN 3

Weight conversion module for industrial areas, with extensive connection possibilities to existing communication systems. Compact and easy to program, DIN-rail or omega-rail installable. It has a 7mm red LED display. In addition to a RS232 port, it is possible to choose a suitable expansion from those available in the table.

Technical features:

- Back panel transmitter (on DIN rail or omega rail mount)
- 5 digit led display h 7mm, keypad 3 mechanical keys

CALIMERA



USB version



IP65 case version

CALIMERA

Technical features:

- CE-M approved weight transmitter (OIML R-76/EN 45501), with LCD display for indication, available in USB-232 or Ethernet-485 version for connection to PC or operator terminal for use as indicator.
- Setup and calibration with keys and display or with configuration application via USB protection.
- Dual input for analogue load cells, available with DIN-rail mounting bracket for rear panel mounting or mounted in IP65 ABS case.

WIN 3 BACKPLANE TRANSMITTER VERSIONS AVAILABLE

	Code
WIN3/RS485	VW03-485
WIN3/ANALOG	VW03-A
WIN3/ETHERNET	VW03-E
WIN3/CANOPEN	VW03-CO
WIN3/PROFIBUS	VW03-PB
WIN3/PROFINET	VW03-PN
WIN3/ETHERNET IP	VW03-EI
WIN3/DEVICE NET	VW03-DN

CALIMERA VERSIONS AVAILABLE

	Code
CALIMERA ETHERNET VERSION	VCALI-E
CALIMERA ETHERNET VERSION WITH DIN RAILS	VCALI-EG
CALIMERA USB VERSION	VCALI-U
CALIMERA USB VERSION WITH DIN RAILS	VCALI-UG
CALIMERA USB VERSION WITH IP65 CASE	VCALI-UB

ATEX WEIGHT INDICATOR



SERIES ATEX DISPLAY MOD. SW21 | SW22



Technical features:

ATEX-certified stainless steel weight indicators for zone 1,21

Ⓜ II 2G Ex ib [ib] IIC T6 Gb

Ⓜ 2D Ex tb IIIC T85°C Db IP65

Weight indicator in AISI304 stainless steel with IP65 protection, with red LED display h. 20 mm and tactile membrane keypad with IP67 certified protection against water and dust infiltration (8 keys + ON/OFF for SW21 and 20 keys + ON/OFF for SW22).

The two-channel 24-bit A/D converter (16,777,216 internal points) allows the simultaneous management of two weighing platforms with a maximum displayable resolution of 60,000 div. The SW21 and SW22 weight indicators are metrologically approved up to 10,000 div. in a single field or with two or three fields of max. 6000 div. each. 220 V ac- 24 V ac power supply or Battery Box (optional)

The operating modes selectable directly by the operator are:

- Weighing with totalisation
- Weighing with partial resets
- Piece counting (only for SW22)

- Tolerance control
- Unloading weighing (only for SW22)
- Peak display
- Weighing animals
- Weighing with input and output for weighbridge.

For the SW22 indicator, the Multi-tare functions with Tare note and Multiplication factor archive are active, as well as the alarm function with association between an event (weight value, piece number...) and a consequent acoustic and visual signal. I/O section: No. 2 RS232 serial ports configurable for connection to PC, external printers, solid roll printer, labeller, weight repeater.

Options on request when ordering:

Rechargeable battery box (with battery for charging in safe area)

Power supply unit, 220 V ac Atex certified

Power supply unit, 220 V ac for Safe Zone with 10 m cable.

Alibi memory card

AVAILABLE VERSIONS

SW21 stainless steel Display 8 keys + on/off

SW22 stainless steel display 20 keys + on/off

Code

VSW21

VSW22

OPTIONS ON REQUEST WHEN ORDERING

Rechargeable Battery Box (with battery for charging in safe area) ATEX Certificate:

Ⓜ II 2G Ex [ib] IIC T6 Gb | Ⓜ II 2D Ex [ib] IIIC T85°C IP65 Db

220 V ac power supply unit ATEX certified: Ⓜ II (2) G [Ex ib Gb] IIC Ⓜ II (2) D [Ex ib Db] IIIC

Power supply, 220 V ac for Safe Zone with 10 m cable.

I/O Card with four Outputs and two digital Inputs

Analogue current/voltage output (0-5V; 0-10V; 0-20mA; 4-20mA)

Alibi Memory Card

Internal wired module for Ethernet connection

RS422 - RS485 data output

Stainless steel floor-standing shower column h. mm 1100

Stainless steel bracket for wall mounting

Atex Declaration of Conformity for Platform - Indicator Assembly

Code

OGE0B22X

AAL220-2C3C

AAL220-ZS

ASESW21-IO

ASESW21-AN

ASESW21-MF

ASESW21-ETH

ASESW21-RS422

OGE1COP-SW

OGE1SFP-SW

CONFORMIT-ATEX



WEIGHT REPEATERS

REP 19



20 mm display

REP 40



40 mm display

REP 60



60 mm display

REP 100



100 mm display

RHE 100 - B



SCA60-W



Weight repeater REP 19

- ABS case
- Weight indicator 20mm
- RS-232/RS-422/485 serial interface
- Connectable to all Eurobil weight displays
- Free cable length
- Power supply via supplied power supply unit or possibly internal battery

Stainless steel weight repeater REP 40

- Stainless steel case
- 40mm weight indicator
- RS-232/RS-422-485 serial interface
- Connectable to any display with a serial interface
- Standard 3m cable
- Requires 230V power supply

Stainless steel weight repeater REP 60

- Stainless steel case
- 60mm weight indicator
- RS-232/RS-422-485 serial interface
- Connectable to any display with a serial interface
- Standard 3m cable
- Requires 230V power supply

Stainless steel weight repeater REP 100

- Stainless steel case
- 100mm weight indicator
- RS-232/RS-422-485 serial interface
- Connectable to any display with a serial interface
- Standard 10m cable
- Requires 230V power supply

Stainless steel weight repeater RHE 100 Led White

- Stainless steel case
- Max. 6 LED 7-segment display h 100
- 8 indicator lights
- IP67 protection
- Operating temperature -20°C to +70°C
- Anti-glare panel
- Adjustable application for outdoor use
- 220/240 V ac power supply

Model

REP 19 Stainless steel weight repeater display 20mm

REP 40 Stainless steel weight repeater display 40mm

REP 60 Stainless steel weight repeater display 60mm

REP 100 Stainless steel weight repeater display 100mm

RHE 100 Stainless steel weight repeater display 100mm for outdoor led white

SCA60-W 60 mm stainless steel white LED weight indicator, 2 Rs232/485 ports

SCA60-R IP-65 stainless steel weight repeater with 60mm white LEDs, 2 RS232/485 ports

Code

RP19

RP40

RP61

RP11

RHE-100-B

VSCA60-W

VSCA60-R

Stainless steel PIECE COUNTER



FLY - TN LOW VERSION PIECE COUNTER

- Steel case and stainless steel plate
- 19 mm weight indicator with red LEDs
- 16-button keyboard
- 1 RS-232 serial interface
- Connection to labeller-printer or PC
- Self-weighted and manual tare
- Counting function with sampling
- Internal rechargeable battery operation



B-FLY - TN PIECE COUNTER SCALE WITH COLUMN

- Stainless steel case
 - Stainless steel plate
 - Plate dimensions 30x30cm
 - Red LED display
 - Numeric keypad 17 keys
 - Internal rechargeable battery operation
- Options:** dual display (also customer-side)



CPS - 40 PIECE COUNTER

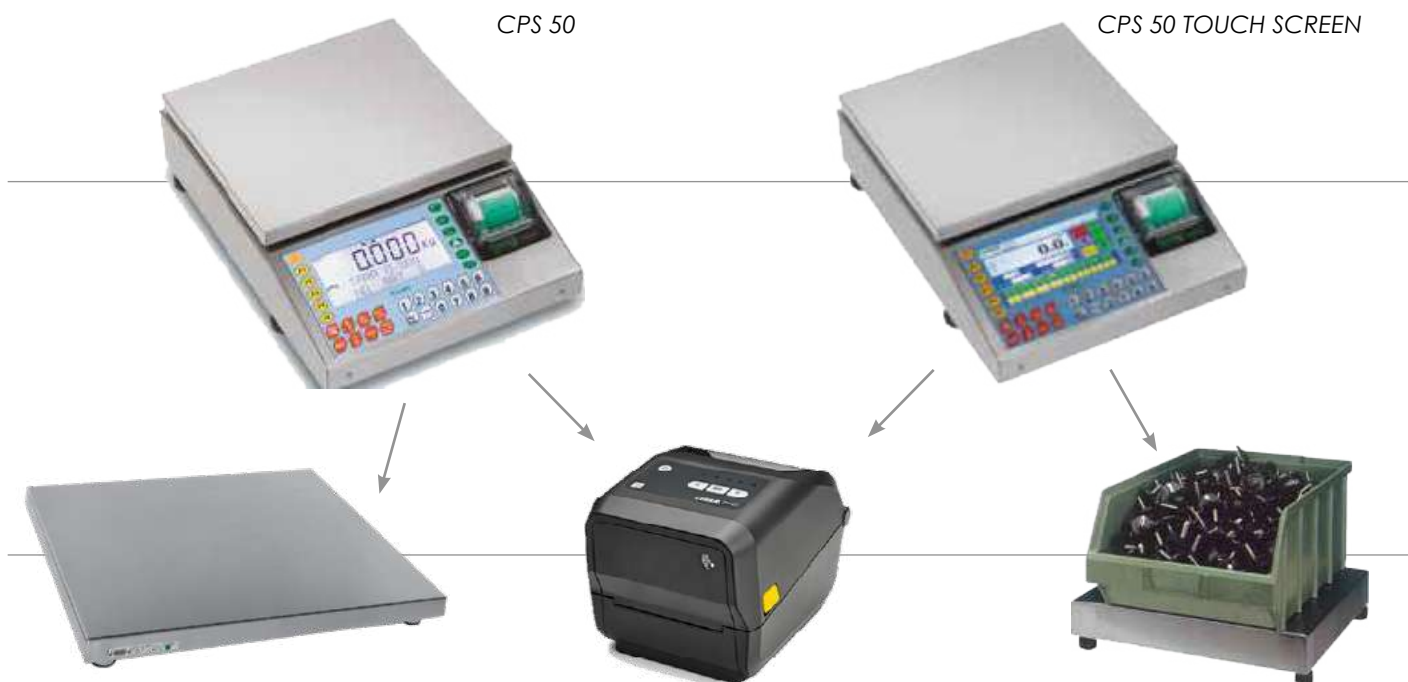
- Stainless steel Case
- Custom LCD weight indicator
- External 28 V power supply or optional internal 24 V batteries
- 2 RS-232 serial interface
- Connectable platforms nr.2
- 12 / 24 Volt input
- Self-weighted, manual or programd tare
- Counting function
- Setting 4 / 8 alphanumeric codes
- Storage of 200 articles
- Data transmission to external printer or PC

CPS - 50 PIECE COUNTER

- Operating conditions: -10°C to +40°C with maximum humidity 95% n.c.
- Interfaces: n°2 RS232, n°1 PS/2 External PC keyboard
- Display: Weight indicator: 7-segment 20 mm
- 2x20 backlit LCD display
- Keyboard: 32 touch-sensitive buttons
- Case: Stainless steel
- Dimensions (W x H x D): 300x120x440 mm
- Weight: 9.80 kg
- Battery: 6V 10Ah
- Battery autonomy: 8 hours
- Battery charging time: 10 hours
- Optional: No. 1 RS485 (replacing an RS232)

Functional characteristics:

- Linking 2 platforms
- Counting function with variable number sampling (also from serial)
- Sampling by reading the weight from a serial analytical balance
- Manual setting of average unit weight (also from serial)
- Personalisation of receipt header (5 lines)
- Selection of print type (single or cumulative)
- Internal thermal or linerless paper printer
- Connection to serial weight repeater



Available versions

Model	Load and DIV			Code
	Max kg	e g		
FLY - TN LOW VERSION	3	0,1	In approved version 1/2g	ZFLY1003
	6	0,2		ZFLY1006
	15	0,5	In approved version 2/5g	ZFLY1015
	30	1		ZFLY1030
B-FLY-TN WITH COLUMN	3	1	In approved ver. 3/6kg : 1/2g	BFLY1003
	6	2		BFLY1006
	10	2		BFLY1010
	15	5		BFLY1015
	30	5	In approved ver. 12/30kg : 2/5g	BFLY1030
	15	5/2		BFLY4015
	30	10/5		BFLY4030
CPS-40	3	0,1	In approved version 1/2g	ZCS4003
	6	0,2		ZCS4006
	15	0,5	In approved version 2/5g	ZCS4015
	30	1		ZCS4030
CPS-50	3	0,1	In approved version 1/2g	ZCS5003
	6	0,2		ZCS5006
	15	0,5	In 25g approved version	ZCS5015
	30	1		ZCS5030
CPS-50 Touch Screen	3	0,1	In type-approved version 1/2g	ZCS7003
	6	0,2		ZCS7006
	15	0,5	In type-approved version 2/5g	ZCS7015
	30	1		ZCS7030

PIECE COUNTER ACCESSORIES

	Code
CPS-40 / FLY bowl plate	OCS0PTB
Dual display (customer side) B-FLY-TN	ASE7001/C6
External keyboard (personal computer type) CPS-40/ CPS-50	OCS5-PC
ECPZ program for managing scales/counters and labellers from a PC	WECPZ
Internal battery for CPS-40	OCS4-BATTINT

15" TOUCH SCREEN PC PIECE COUNTER SOFTWARE



LabelOne PIECE COUNTER LABELLING SOFTWARE

- Dual platform management
- Self-weighted, manual or programd tare weighing
- Totalisation of weighing on three levels (partial, general, overall)
- Progressive number management and printing
- Management and printing of selected customer header
- Piece-counting function with variable number sampling
- Manual setting of P.M.U. or automatic linked to article
- Customisation of 8 direct alphanumeric codes
- Programming of article archive with: code, 2 alphanumeric descriptions, p.m.u., tare, barcode and associated labels.



15" touch screen pc software

Piece counter labelling software

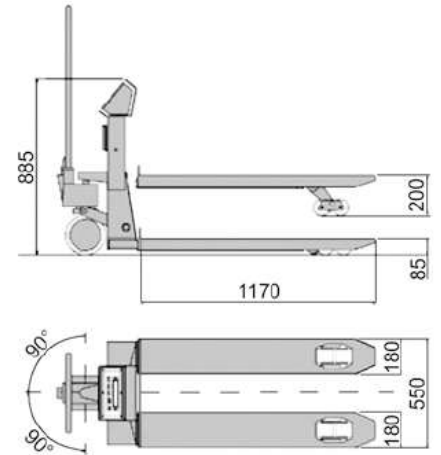
15" touch screen pc

Code

WLSL4.0

PC-TOUCH

PALLET TRUCK TP



TPW with optional printer

The instrument has been designed in such a way as to detect the value of the load and unload the forces in play on the strongest points of the structure, thus guaranteeing the best accuracy. In fact, the moving system is of the double wheel type.

Each fork is equipped with two load cells that ensure load centring by means of a special coupling system. The forks are also independent of each other. The metal parts are protected by a thick layer of paint.

The autonomy is about 24 hours and recharging is possible with the 230V power supply in about 5 hours. The built-in weight indicator is type **FLY/1** for the painted version and type **FLY MINI** in the stainless steel version.

Functional characteristics:

- Automatic tare and manual tare device
- Case: stainless steel
- Tare locking/unlocking device
- Battery level indicator device
- Counting functions
- 9 storable tares
- 99 codes with assignable PMU and management of totals
- Weighing printout with final totalisation, printing of totals per code
- Weighing storage and subsequent download a PC
- Energy autonomy approx. 35 hours
- Battery recharge time approx. 12 hours (recharging takes place even when the instrument is switched off)
- Programmable auto switch-off device if instrument not in use
- Connection to personal computers, printers
- CE-M approval

Available pallet truck TP versions

Load (Max kg)	Division (kg)	Division (CE-M kg)	Code
2.000	0,5	1	ZWT02T0-1000
2.000	0,5	0,5	ZWT02T0-0500
2.000	0,5	1	ZWT12T0-1000
2.000	0,5	0,5	ZWT12T0-0500

Options on request when ordering

Options on request when ordering	Code
Built-in thermal printer	APR0000401037

ATEX WEIGHING PALLET TRUCK

Technical features:

- ATEX Certified Zone 1-21 and 2-22 pallet trucks with integrated weighing system
- Robust, thick sheet metal structure.
- Weight indicator in stainless steel container with protection IP65
- Red LED LCD weight display 20mm high
- Rubber wheels and polyurethane load wheels with a core of steel
- Fork dimensions: 1200x550x85mm
- Weight measurement by means of 4 stainless steel shear load cells, approved for up to 4000 divisions, IP69 protected and ATEX certified
- ATEX-certified junction box complete with junction box, connectors and with IP68 protection
- Total weight: 130kg approx.
- Rechargeable battery power supply with 12-hour runtime approx.
- Charging in a safe area



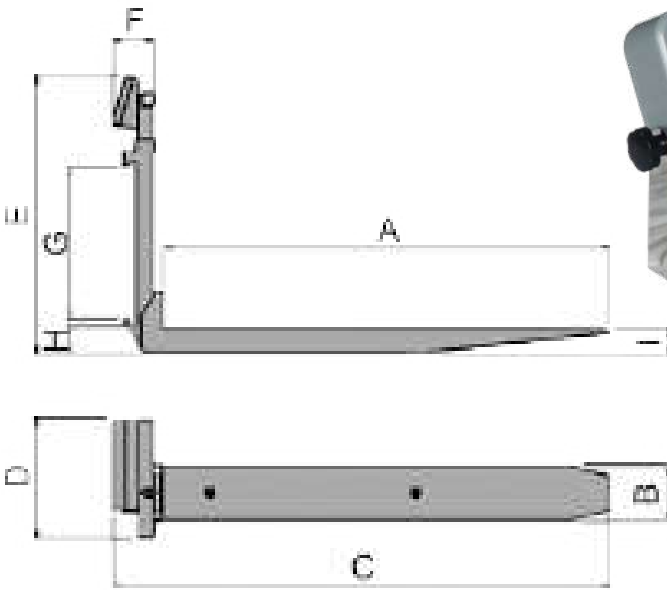
Available ATEX weighing pallet truck versions

ATEX ZONE	DESCRIPTION	Flow Capacity kg	Division g
1-21	Painted structure with stainless steel forks	600/1500/3000	200/1000/2000
2-22	Painted structure with stainless steel forks	600/1500/3000	200/1000/2000
1-21	All stainless steel structure	600/1500/3000	200/1000/2000
2-22	All stainless steel structure	600/1500/3000	200/1000/2000

ACCESSORIES AND OPTIONS ON REQUEST

	Code
Rechargeable Battery Box (with battery for charging in safe area) ATEX Certificate: ⊕ II 2G Ex [ib] IIC T6 Gb ⊕ II 2D [ib] IIIC T85°C IP65 Db	OGE0B22X
220 Vac power supply unit ATEX certified: ⊕ II (2) G [Ex ib Gb] IIC Ex II (2) D [Ex ib Db] IIIC	AAL220-2C3C
Power supply unit, 220 Vac for Safe Zone with 10 m cable.	AAL220-ZS
Analogue current/voltage output (0-5V; 0-10V; 0-20mA; 4-20mA)	ASESW21-AN
Atex Declaration of Conformity f r Platform - Indicator Assembly	CONFORMIT-ATEX

PFL WEIGHING FORKS



Pair of forks with integrated weighing for trolleys elevators. Available for FEM2A or FEM2B plate (up to max. 2500 kg) or FEM3A (up to max. 5000 kg). Although the thickness of the forks is increased, this solution offers the greatest ease of assembly, and does not require the use of any additional equipment. Com leads to a reduction in the lifting capacity of the forklift truck. The forks must simply be replaced with those of the truck.

FLY/PLUS weight display

- ABS enclosure
- 20mm weight indicator 32-button keypad
- 1 RS-232 serial interface
- Self-weighted, manual and cumulative tare
- Connection to weight repeater or printer PC
- Version for oil mills (loading-unloading)

Options:

- RS-422/485
- Connection second platform
- Analogue card 0- 10V / 4-20mA

- Available versions PFL weighing forks
- 2In/2Out board with relay
- Setting two weight thresholds

SELECTABLE FUNCTIONS

- High resolution visualisation x 10
- Net/Gross
- PEAK (highest value detected)
- Totalisation
- HOLD (displayed weight lock)

KEYBOARD FUNCTIONS

Zeroing, Automatic tare, Presetable tare, Totalisation, enter, on/off

	A	B	C	D	E	F	G	H	I
PFL25A	1160	150	1300	315	720	110	382	76	65
PFL25B	1160	150	1300	315	800	110	382	152	65
PFL50A	1160	150	1300	365	932	110	477	76	80

Available versions forche pesatrici PFL

Plate	Load Max kg	Division Kg	Division CE-M Kg	Code
FEM2A	2500	1	1	ZFP-1T5-1200-2A
FEM2B	2500	1	1	ZFP-1T5-1200-2B
FEM3A	5000	2	2	ZFP-1T5-1200-3A



Radio Frequency Platform Connection Module - Indicator

RF868/RS232-RS485-USB waterproof radio transceiver with antenna to be mounted on display.
- Internal rechargeable batteries (autonomy 200 h)

Weight radio transmitter card mod. S178 with antenna and 4 stylus ni-mh 2500mah to be mounted on platform

Code

OGEO-RF868

OGEO-RF868

TP PALLET WEIGHING



Technical features:

- One-piece mobile weighing platform in painted steel or stainless steel
- for above-floor installation and for weighing pallets with a hand pallet truck.
- External dimensions 125cm x 84cm x 90cm height.
- Equipped with special handles and wheels for easy handling within the warehouse.
- Weight detection by means of 4 shear load cells, homologate up to 4000 divisions and with IP67 protection (for painted steel platform) or with IP69 protection (for stainless steel platform).
- 5m shielded connection cable to the display.
- Self-centring articulated feet for each load cell and bubble of spirit level.
- Junction box complete with board, connectors and with IP68 protection.

Available versions pesa pallets TP

Model	Load and DIV		1° Range		Painted code	Inox code
	Max kg	e g	Max kg*	e g*		
TP pallet weigher	600	200	300	100	STP0600	STP1600
	1500	500	600	200	STP01T5	STP11T5
	3000	1000	1500	500	STP03T0	STP13T0

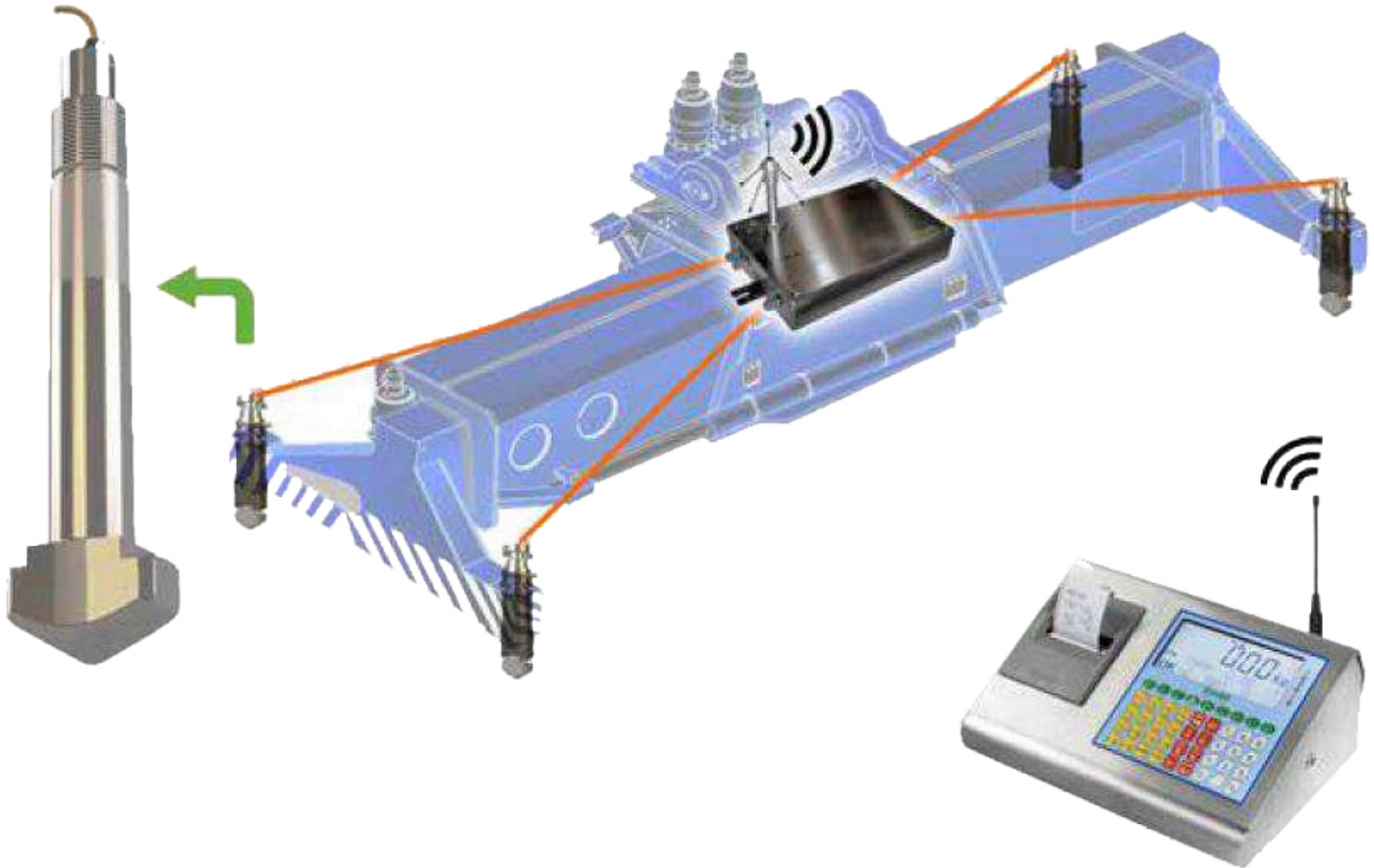
NOTE: TP pallet weighing platforms are connectable to FLY series displays or ISCALE series displays

Accessories and options on request

	Painted code	Inox code
Sheathing insulation		OGE1OB
Display floor stand	OGE0COP	OGE1CLE

TWIST LOCK WEIGHING SYSTEM

★
PATENTED
PRODUCT



Weighing solution suitable for easily obtaining the Verified Gross Weight (VGM) of containers in accordance with SOLAS regulations.

The Twist Lock System with load cell is Eurobil's complete solution for the simplest, most accurate and fastest way to obtain the gross weight of containers. In addition to including the Twistlock load cells, it comes with the Iscale Professional weight indicator (with built-in scale), junction kit, TRF module and inclinometer. The Digital Traction Load Cell is designed to replace existing mechanical Twistlocks with mechanically compatible load cell Twistlocks to easily obtain container weights. Possibility of connecting 4 or 8 Twistlock load cells. Possibility of customising the kit for different installation requirements.

Twistlock technical features:

- Minimum installation required, calibration not necessary, PLUG & WEIGHT
- Compliant with safety factor 6:1 defined by ISO requirements
- Communication Interface: MODBUS RTU (RS485) (Twistlock)

Technical Specifications Weight Indicator (Iscale Professional):

- Backlit LCD display
- Serial interface: RS 232
- 32-key keyboard
- Built-in thermal printer

Technical characteristics Protection Box:

- Protects against saltiness and weathering
- Stainless steel with seals
- Planned accommodations for: junction box, tiltmeter, RF module, RF antenna

Capacity: Up to 3000 OIML R-60 divisions, 5 to 25 t digital cell

TWIST LOCK WEIGHING SYSTEM

WIRELESS



Software gestione Pesate su PC



CABLE



Twist Lock weighing system versions

Version 1: display (Iscale Professional) + **No. 4 Twistlocks** + Junction Box + TRF Module + Inclinometer + Stainless Protection Box

Code

ETWL4

Version 2: display (Iscale Professional) + **No. 8 Twistlocks** + Junction Box + TRF Module + Inclinometer + Stainless Protection Box

ETWL8

Accessories and options on request

Complete kit for RF connection to PC (display -> PC)

Code

AASKRF-PC

PC Weighing Management Software

WPAP

24v to 12v voltage regulator (TRF)

ASES137

VOLUMETRIC SCALE



Features:

- An instrument for recording, in addition to weight, the dimensions of regularly shaped packages (e.g. boxes).
- In addition to the weighing plate, the painted steel structure consists of two lateral bulkheads for housing the packaging, and the weight display with printer, where the dimensions of the packaging (width, length and height) are shown on the display in addition to the volume.
- Weight measurement by means of an M-type single-cell platform in painted steel or a 4-cell load cell platform. type PVS/B in painted steel, square in shape.
- Volume detection generally through 3 ultra-sonic sensors on submetre measurements and 3 laser sensors for larger platforms.

NOTE Quotation to be quoted depending on the capacity of the weighing system, the size of the platform and the type of sensors.

WEIGHT AND VOLUME MOTION DETECTION SYSTEM



Features:

- Reliable detection of main characteristic data independent of shape and surface.
- Measurement procedure in both directions, data output directly after object measurement for high process reliability and great time savings.
- Direct transmission of main product data to the host for the digitisation of the entire hub.
- Accurate and reliable data capture through automation of manual processes.
- Optimised and efficient use of storage space and packaging material due to extreme measuring accuracy.
- Integrated weighing system: 15kg capacity 5g division.

NOTE Quotation to be requested on quotation depending on packaging size and measurement accuracy.

E-FLASH SCAN WEIGHT AND VOLUME DETECTION SYSTEM



Developed in .net Framework technology, it is versatile and can be integrated with the most common Windows applications.

It allows you to speed up, save and exclude human calculation errors. Running on any Microsoft Windows platform, it has a very intuitive graphical interface and can be configured for use with the main scale models, integrates with various information systems and all Microsoft Office applications.

It falls under Industry 4.0 benefits and the cost of the system is amortised in a few months.

Features:

- Instant weight detection
- Reception of width-length-height values from 5 3D Ethernet cameras positioned above the pallet scale
- HD camera for image capture
- Receive weight value from balance terminal
- Possibility of managing various scale models selectable from set-up
- Archiving and historical recall of weighs with associated volume and the three item sizes
- Print packing list by date filter, article, customer on a local or network printer
- Export of packing list in pdf, word doc, excel formats
- Multi-workstation to network on one database
- Label printing with thermal transfer printer or laser printer
- Suitable for both conventional and touchscreen PCs
- Possibility of adding a laser reader for automatic recall of article/production order information
- Possibility of using different types of databases: Access, Sql Server, Oracle, etc.
- Customisable for any requirement

NOTE quotation to be requested depending on the capacity of the weighing system, the size of the platform and the software and hardware specifications of the station.

Labelling stations with TOUCH PC



LABELLING SYSTEM COMBINED WITH PC-TOUCH
ALUMINIUM BODY IDEAL FOR INDUSTRIAL ENVIRONMENTS

Modalities of use

- Graphical interface for article selection and labelling on aluminium touch PC
- Possibility of connection to our instruments: Iscale - Fly Plus - SunEco - SunEco Alex
- Available versions, complete station made of:
 - PM42 labeller with PC-TOUCH aluminium body, stainless steel carriage, FLY PLUS display and stainless steel platform
 - Unlimited number of articles
 - Job management via PC-touch: add, delete, article selection, convenient management of variable label fields that can be edited directly from a dedicated labelling program.
 - Barcodes EAN13, EAN128, QR CODE programmable

Software capabilities

- Unlimited and customizable number of label formats and by means of the included graphic label editing program

Print speed:

At 203 dpi/300 dpi: 100 mm/s-300 mm/s
At 406 dpi: 100 mm/s-250 mm/s

Complete Labelling Station with PC-TOUCH aluminium carriage, stainless steel trolley, FLY PLUS display and stainless steel platform in the following available versions

Model	Load (Max Kg)	Division (g)		Code
M30X30 with PD45S labeller	12/30	2/5		EPC-TOUCHM3012
M40X40 with PD45S labeller	12/30	2/5		EPC-TOUCHM4012
M60X60 with PD45S labeller	30/60	10/20		EPC-TOUCHM6030
M60X60 with PD45S labeller	60/150	20/50		EPC-TOUCHM6060

Model	Load (Max Kg)	Division (g)		Code
M30X30 with ZD421T labeller	12/30	2/5		EPC-TOUCHM3012-Z
M40X40 with ZD421T labeller	12/30	2/5		EPC-TOUCHM4012-Z
M60X60 with ZD421T labeller	30/60	10/20		EPC-TOUCHM6030-Z
M60X60 with ZD421T labeller	60/150	20/50		EPC-TOUCHM6060-Z

** Certified system for tax credit 4.0

Touch Screen PC



Features:

- Cabinet format Integrated system with 15" LCD panel, made of extruded aluminium
- TFT LCD panel 15", 1024x768 TFT LCD panel with capacitive touch screen
- AC97 Audio Compatible
- Motherboard Embedded Speakers 3W stereo speakers
- Motherboard format W 204 x D 145 mm LAN standard Realtek 8100BL Ethernet 10/100 integrated on board
- Microprocessor:
 - CPU:** Intel® Bay-Trail J1900 Quad Core
 - RAM:** DDR3L, 1333/1600 MHz, 1*SO- DIMM (4G as standard, optional up to 8 GB)
 - 3 RS232 serial ports DB9 Pin
 - 1 Lan RJ45 Ethernet port**
 - 1 VGA Port** (x Secondary Display)
 - 4 USB ports**
- Standard 64 GB SSD hard disk
- Temperature range 0°C ~ 35°C
- Windows/10 operating system

Model

PC touch Screen 15"

Code

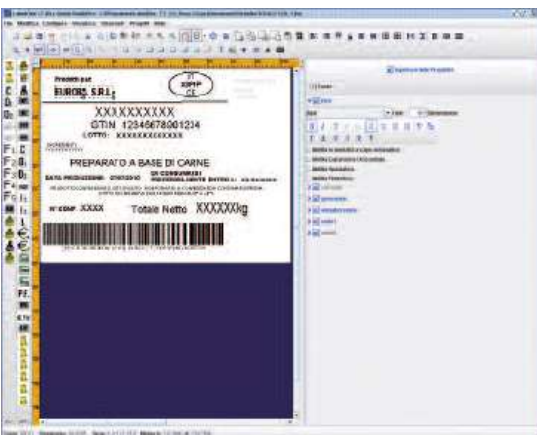
PC-TOUCH

Weighing reception software



Features:

- Standard PC software for receiving/archiving weighs after printing a price tag or simple data transmission via weighing terminal.
- Weighing data storage after tag printing or simple transmission string transmission weighing terminal.
- Print packing list by date filter, article, customer on local or network printer.
- Export of packing list in pdf, word doc, excel formats.
- Multi-workstation to network on a single database.
- Possibility of using different types of databases: Access, Sql Server, Oracle, etc.



Graphic software for label design

Labelone labelling software

Features:

- Dual platform management
- Self-weighted, manual tare subtraction or planned
- Weighing totals on three levels (box, pallet, tot. pallets)
- Management and printing of selected customer header
- Programming the article archive with:
 - code, 2 alphanumeric descriptions, 2500 characters in ingredient field, expiry date, seasoning date, tare, price, EAN13 barcode, EAN128 code, automatic totalisers, traceability lists, nutritional tables.
- Possibility of having several deadlines for the same article
- Quick and easy lot field editing
- Storing Article History
- Storing Customer History
- No limits on the number of articles, customers, traceability lists and label formats
- Possibility of exporting and importing data from software external management.



Working software

15" touch screen PC software

Weighing Reception Software

LabelOne Food Labelling Software

Batch Labelling Software, Delivery Notes, Invoices

Code

WRXP

WLSL4.0

WPPS

TROLLEYS

Stainless steel double decker trolley



Trolley with stainless steel shelves, with pull-out drawer



Floor scale 30x30 with Fly Plus

FLY PLUS, fiscal memory version, to be connected to PC TOUCH with column and 30x30 stainless steel platform Multirange 12/30 kg division 2/5g



Model	Code
Stainless steel double decker trolley	OM61C2P
Trolley with stainless steel shelves, with pull-out drawer	OM41CAS
Floor scale 30x30 with FLYPLUS	BM308030-FLYPLU

Labelling printers



Features PD45S

- Dimensions: 484x292x283 mm
- Thermal or thermal transfer printing
- Max. width at 203 dpi: 108 mm (4.25 inches)
- Print speed: 203 dpi/300 dpi: 100 mm/s-300 (4 ips-12 ips)
- 203 dpi print resolution: 8 dots/mm
- 300 dpi: 11.8 dots/mm
- 406 dpi: 16/dot/mm
- Film wrapper and rewinder

Interfaces

- Ethernet 10/100 Mbps
- RS-232, up to 115.2 KB/s
- USB 2.0
- USB Host X



Features ZD421T

- Print width 4.09 Inches / 104 Mm
- Maximum print speed
- 152 mm (6") per second (203 dpi)
- 102 Mm (4") per second (300 dpi)
- Communication methods usb v2.0 (Standard) Serial rs-232 (optional)
- Ethernet 10/100 (optional) Wireless: 802.11ac with Bluetooth 4.1 (Factory-installed option)
- 203 dpi/8 dots per mm print resolution
- 300 Dpi/12 dots per mm (optional)
- Media sensors
- Multi-position transmissive and full- width reflective sensor

Model

PD45S labeller printer with rewinder

Label Printer ZD421T

Code

EDP45

E910

Bar code readers



Single-line laser scanner

Based on the Voyager series technology, Honeywell's single-line laser scanner offers outstanding user-friendliness and excellent reading capabilities of linear barcodes up to 58 centimetres long.

Optimised for fast scanning of linear barcodes, even in the case of damaged or poorly printed codes, the combination of excellent scanning performance and extended depth of field makes an ergonomic solution ideal for applications requiring a high number of scans

- **Extended depth of field:**
enables easy scanning of objects at a distance and allows users to read 13 mil barcodes up to a distance of 447 mm
- **Ergonomic design:**
suitable for all hand types, reduces user fatigue in applications requiring a high number of scans
- **Ease of use:**
the simple and quick assembly of the holder facilitates installation; the ergonomic design reduces user fatigue in applications requiring a high number of scans.
- **High processing speed:**
ensures effective object detection and automatic In-Stand detection and configuration; extended depth of field facilitates scanning of objects at a distance.



Wireless area-imaging reader

- **Bluetooth wireless technology:**
simplifies the scanning of all standard 1D, PDF and 2D barcodes up to 10 metres from the base (depending on the environment).
- **Superior 1D code performance:**
unlike conventional laser readers, the 1D version can read barcodes omnidirectionally, making it ideal for scanning in presentation mode.
- **Support for future needs:**
For those who only need 1D scanning but might be interested in 2D scanning in the future, the reader can be easily upgraded from 1D to 2D scanning at any time.
- **Mobile phone reading:**
scans coupons and tickets from device displays laptops.
- **Long-life, on-site removable battery:**
the on-site replaceable lithium-ion battery provides more than 14 hours of autonomy depending on the scan volume.

Model	Code
Voyager 1250 G	SCANNER-V1250
Voyager 1452 G	SCANNER-V1452

Type SP/A bridge weighing machines to be buried flush with the floor or above ground



Technical features:

- Traditional weighbridges made of painted steel and consisting of embossed sheet metal modules.
- The metal structure has a height of approx. 375 mm and requires a pit of approx. 495 mm (in the flush floor version).
- Weight measurement using **analogue pressure load cells, approved up to 4000 divisions** and with IP68 protection.
- 15m shielded connection cable to the display.
- Junction box complete with board, connectors and IP68 protection.
- The standard version includes the **model I scale visor with model TM295 tag printer**.
- Foundation pit frame for the version to be buried flush with the floor (optional).
- Special sizes and capacities by quotation

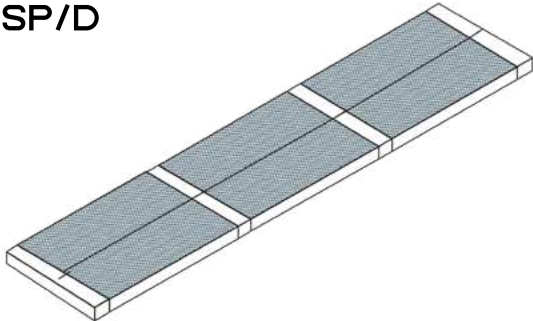
AVAILABLE VERSIONS SP/A TRUCK SCALES WITH DISPLAY, PRINTER AND ANALOGUE LOAD CELLS APPROVED UP TO 4000 DIVISIONS

Dimensions m	Load and DIV		1° Range		MODULES	Code
	Max t	e kg	Max t	e kg		
4x3 4 cells	40	10	15	5	2 x 4x1.5 m panels 2 headers	PTS040T-4X3
6x3 4 cells	40	10	15	5	2 x 6x1.5 m panels 2 headers	PTS040T-6X3
8x3 6 cells	60	20	30	10	4 panels 4x1.5 m 3 headers	PTS080T-8X3
10x3 6 cells	60	20	30	10	2 x 4x1.5 m panels 2 x 6x1.5 m panels 3 headers	PTS080T-10X3
12x3 6 cells	60	20	30	10	4 x 6x1.5 m panels 3 headers	PTS080T-12X3
14x3 8 cells	60	20	30	10	4 panels 4x1.5 m 2 x 6x1.5 m panels 4 headers	PTS080T-14X3
16x3 8 cells	60	20	30	10	2 x 4x1.5 m panels 4 x 6x1.5 m panels 4 headers	PTS080T-16X3
18x3 8 cells	60	20	30	10	6 panels 6x1.5 m 4 headers	PTS080T-18X3

Note: The above prices are to be recalculated in relation to the supply and/or installation-assembly conditions of the weighing system
The above prices do not include the transport of materials, installation/assembly of the scale and testing with sample weights of the weighing system.
SP/D type weighbridges and PE axle weighers to be buried flush with the floor or above ground

SP/D type weighbridges and PE axle weighers to be buried flush with the floor or above ground

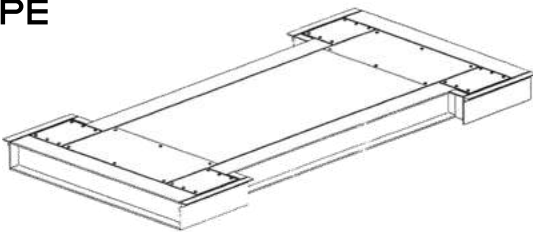
SP/D



Main features of SP/D weighbridges

- Traditional weighbridges made of painted steel and consisting of embossed sheet metal modules.
- The metal structure has a height of approx. 375 mm and requires a pit of approx. 495 mm (in the flush floor version).
- Weight measurement using digital compression load cells, approved up to 4000 divisions and with IP68 protection.
- 15m shielded connection cable to the display.
- Digital junction box complete with board, connectors and with IP68 protection.
- The standard version includes the model Iscale visor with model TM295 tag printer.
- Foundation pit frame for the version to be buried flush with the floor (optional).
- Special sizes and capacities by quotation

PE



Main features PE axle weighers

- CE-M approved compact painted steel platform for the static weighing of vehicle axles.
- Weight detection by means of double-edged load cells, approved up to 4000 divisions and with IP68 protection.
- 15m shielded connection cable to the display.
- The frame for the foundation pit is excluded, the display and the press.

AVAILABLE VERSIONS SP/D WEIGHBRIDGES WITH DISPLAY, PRINTER AND DIGITAL LOAD CELLS APPROVED UP TO 4000 DIVISIONS

Dimensions m	Load and DIV		MODULES	Code
	Max t	e kg		
4x3 4 cells	40	10	2 x 4x1.5 m panels 2 headers	PTD040T-4X3
6x3 4 cells	40	10	2 x 6x1.5 m panels 2 headers	PTD040T-6X3
8x3 6 cells	60	20	4 panels 4x1.5 m 3 headers	PTD080T-8X3
10x3 6 cells	60	20	2 x 4x1.5 m panels 2 x 6x1.5 m panels 3 headers	PTD080T-10X3
12x3 6 cells	60	20	4 x 6x1.5 m panels 3 headers	PTD080T-12X3
14x3 8 cells	60	20	4 panels 4x1.5 m 2 x 6x1.5 m panels 4 headers	PTD080T-14X3
16x3 8 cells	60	20	2 x 4x1.5 m panels 4 x 6x1.5 m panels 4 headers	PTD080T-16X3
18x3 8 cells	60	20	6 panels 6x1.5 m 4 headers	PTD080T-18X3

NOTE: The above prices do not include the transport of materials, installation/assembly of the scale and testing with sample weights of the weighing system.

PE Type Approved axle weighing platforms CE M, display and printers EXCLUDED	Load and DIV		1° Range		Code
	Max t	e kg	Max t	e kg	
1X3 - 4 cells	15	5	6	2	PPE015T-1X3 PPE020T-1X3
	20	10	10	5	

N.B. I Prices sopra indicati sono da ricalcolare in relazione alle condizioni di fornitura e/o installazione-montaggio dell'impianto di pesatura

Full double lane weighbridges



Technical features:

- Painted steel double lane weighbridges consisting of modules (with a embossed sheet metal top) 1.5m wide and 4.5m long.
- The metal structure has a height of approximately 200 mm with an extremely simple and quick coupling system between the modules.
- Four 2m long access ramps are supplied as standard.
- Weight detection by means of traction/compression load cells, approved up to 4000 divisions, with IP68 protection and complete with self-levelling 250 mm diameter feet on the floor with non-slip rubber.
- 15m shielded connection cable to the display.
- Analogue/digital junction box complete with board, connectors and with IP68 protection.
- The standard version includes the Iscale model visor with model TM295 tag printer.
- Special sizes and capacities by quotation

AVAILABLE VERSIONS FULL DOUBLE LANE WEIGHBRIDGES WITH DISPLAY, PRINTER AND APPROVED ANALOGUE LOAD CELLS UP TO 4000 DIVISIONS

CODE	DIMENSIONS M	MODULES	LOAD MAX E DIVISIONI
PDC030T-1,5X4,5	4,50x1,5x0,20	2 panels 8 cells	30000/60000-10/20 kg
PDC030T-1,5X9	9,00x1,5x0,20	4 panels 12 cells	30000/60000-10/20 kg
PDC030T-1,5X13,5	13,50x1,5x0,20	6 panels 16 cells	30000/60000-10/20 kg
PDC030T-1,5X18	18,00x1,5x0,20	8 panels 20 cells	30000/60000-10/20 kg

NOTE: The above prices do not include transport of materials and installation/assembly of the weighing equipment. Verification before weighing at bridge is made directly at the factory before shipment.

NOTE: The above prices are to be recalculated in relation to the supply and/or installation-assembly conditions of the weighing system



Fly Plus in Abs



Weight repeater



iscale weight display with TM 295 dot matrix printer

Double lane bridge weighing machines with central opening



Technical features:

- Double lane weighbridges made of painted steel and consisting of modules (with embossed sheet metal top) 1m wide and 4.5m long.
- The metal structure has a height of approximately 200 mm with an extremely simple and quick coupling system between the modules.
- Four 2m long access ramps are supplied as standard.
- Weight detection by means of traction/compression load cells, approved up to 4000 divisions, with IP68 protection and complete with self-levelling 250 mm diameter feet on the floor with non-slip rubber.
- 15m shielded connection cable to the display.
- Analogue/digital junction box complete with board, connectors and with IP68 protection.
- The standard version includes the Iscale model visor with model TM295 tag printer.
- Special sizes and capacities by quotation

AVAILABLE VERSIONS DOUBLE-AISLE WEIGHBRIDGES WITH DISPLAY, PRINTER AND APPROVED ANALOGUE LOAD CELLS UP TO 4000 DIVISIONS

CODE	DIMENSIONS M	MODULES	LOAD MAX E DIVISIONI
PDC030T-1X4,5	4,50x1,00x0,20	2 panels 8 cells	15000/30000-5/10 kg
PDC030T-1X9	9,00x1,00x0,20	4 panels 12 cells	15000/30000-10/20 kg
PDC030T-1X13,5	13,50x1,00x0,20	6 panels 16 cells	30000/60000-10/20 kg
PDC030T-1X18	18,00x1,00x0,20	8 panels 20 cells	30000/60000-10/20 kg

NOTE: The above prices do not include transport of materials and installation/assembly of the weighing equipment. Verification before weighing at bridge is made directly at the factory before shipment.

NOTE: The above prices are to be recalculated in relation to the supply and/or installation-assembly conditions of the weighing system



Fly Plus in Abs



Weight repeater



iscale weight display with TM 295 dot matrix printer

PVS/A type vehicle weighing platforms



Technical features:

- Painted steel weighing platforms with embossed sheet metal for above-floor installation, suitable for weighing vehicles and small vans (standard equipment includes 2 platforms and 4 access ramps).
- Dimensions of each platform: length 4.5m - width 0.70m.
- Dimensions of each ramp: length 1m - width 0.70m.
- Weight measurement through 12 stainless steel shear load cells, approved up to 4000 divisions and with IP69 protection.
- Shielded display connection cable of 5m.
- Self-centring articulated feet for each load cell and spirit level.
- Junction box complete with board, connectors and with IP68 protection.
- The standard version includes the display Fly Plus model and the thermal printer fast 80 model

AVAILABLE VERSIONS PVS/A VEHICLE WEIGHING PLATFORMS - WITH DISPLAY, PRINTER AND APPROVED LOAD CELLS UP TO 4000 DIVISIONS

CODE	DIMENSIONS	MODULES	LOAD	DIVISION
PROTTC6TO	4,50x0,70x0,13 m	2 panels	6000 kg	1,2 kg
PROTTC8TO	4,50x0,70x0,13 m	12 cells	8000 kg	2 kg
PROTTC10T	4,50x0,70x0,13 m		10 000 kg	5 kg

Accessories for PVS/A vehicle weighing platforms

	Code
Display floor stand	OGE0COP

NOTE: The above prices are to be recalculated in relation to the supply and/or installation-assembly conditions of the weighing system

Weighbridges software

Touch screen 15" PC



Main features weighbridge/container management software:

- Intuitive graphic interface and suitable for use on a conventional PC or touch screen PC
- Configurable for use with the main scale models, it integrates with the customer's information system with all Microsoft Office applications
- Master data management: Customers, Carriers, Goods, Vehicles.
- Complete weighing history.
- Connection of several scales, management also of 'A+B' and 'axle weighing' functions
- Connection of several weighing terminals
- Manual data entry or recall from master data.
- First weighing and second weighing function with number recall memory.
- Unique weighing function with known tare weight
- Automatic calculation of Gross, Tare, Net values
- Price management per kg for eventual calculation of amount.
- Print single entry/exit document on A4 sheet with laser printer
- Packing list printouts with filters and export functionality in pdf, excel, word
- Alibi-memory management for weighing system approval
- Additional information management: company, port of embarkation, port of disembarkation, ship, transit, booking

Technical specifications 15" touch screen PC:

- Cabinet format Integrated system with 15" LCD panel, made of extruded aluminium
- TFT LCD panel 15", 1024x768 TFT LCD panel with touch screen resistive
- AC97 Audio Compatible
- Motherboard Embedded Speakers 3W stereo speakers
- Motherboard format W 204 x D 145 mm LAN standard Realtek 8100BL Ethernet 10/100 integrated on board
- Microprocessor:
- Intel® Atom™ CPU N270 @ 1.60 GHz 800 MHz 0.99 GB of RAM
- 3 RS232 serial ports DB9 Pin
- 1 Lan RJ45 Ethernet port
- 1 VGA Port (x Secondary Display)
- 4 USB ports
- Standard 150GB hard disk Usage temperature 0°C ~ 35°C
- Software certification included: Microsoft® Windows Embedded PosReady2009 - Version 2.0 - Service Pack 3

Model

Weighbridge / Container Management Software

15" Touch Screen PC

Code

WPAP

PC-TOUCH

Coin box for bridge weighing machine



Technical features:

- Self-service weighing terminal with coin box, RFID token or IButton payment
- Stainless steel structure
- Rear opening for easy access with security key.
- Backlit alphanumeric LCD display
- Vandal-proof thermal printer (60mm roll)
- Issuing simple or database receipts
- Possibility of registering up to 500 customers
- Time and date stamp
- Dimensions 500x350x330mm

Versions:

- Coin box/A: analogue indicator
- Coin box/D: indicator for digital load cells

Basic Configuration:

- Weight / Tare
- Language: Italian, Spanish, English, French and Portuguese

Standard software:

- Automatic backlight on/off
- Programmable header and end of receipt.
- Number of receipts by weight configurable
- Price setting by weight

Optional hardware:

- Conversion of the first or second RS232 opto-isolated to RS485
- Conversion of first or second RS232 to RF

Technical data:

- Accuracy Class III
- Maximum number of divisions per range 10000
- Minimum load cell impedance 40 Ω
- Maximum load cell impedance 2000 Ω
- Minimum temperature -10° C
- Maximum temperature 40° C
- 12 V DC power supply (with 230 V AC / 12 V DC internal power supply)
- Sense system Available
- Load cell cable length
- 4-wire systems 5 m/mm²
- 6-wire systems No limit

Model

Self-service coin box

Code




VSC-MIN

Load Cells

	Code	Model	Disp. ATEX	Available capacities
	ALCEB-L	EB-L		7 - 10 - 20 - 40 kg
	ALCEB-C	EB-C		10 - 18 - 36 kg
	ALCPL503	PL-50 (4000 div.)		50 - 75 - 100 - 150 - 250 kg
	ALCPL506	PL-50 (6000 div.)		50 - 75 - 100 - 150 - 250 kg
	ALCBS1/3	BS-1		50 - 75 - 100 - 150 - 250 - 300 - 500 kg
	ALCBS2/3	BS-2		300 - 500 - 750 - 1000 kg
	ALCFX1/3	FX-1		15 - 25 - 50 - 75 - 100 - 150 - 200 kg
	ALCFX2/3	FX-2		15 - 25 - 50 - 75 - 100 - 150 - 200 - 250 - 300 - 500 - 750 - 1000 - 1500 Kg
	ALCCO1/3	CO-1		250 - 300 - 500 - 750 - 1000 - 1500 kg
	ALCCO2/3	CO-2		2000 - 3000 - 4000 kg
	ALCCO2/35T0	CO-2		5000 - 7500 kg
	ALCTA0/3	TA-0 (4000 div.)		30 - 50 - 75 - 100 - 150 - 250 - 300 - 500
	ALCTA0/6	TA-0 (6000 div.)		30 - 50 - 75 - 100 - 150 - 250 - 300 - 500
	ALCTA1/4	TA1/4 (4000 div.)		400 - 500 - 750 - 1000 - 1500 - 2000 kg
	ALCTA1/6	TA1/6 (6000 div.)		400 - 500 - 750 - 1000 - 1500 - 2000 kg
	ALCS1//3	S-1		30 - 50 - 75 - 100 - 150 kg
	ALCS2A/3	S2-A		300 - 500 - 750 - 1000 kg
	ALCS2B/3	S2-B		750 - 1000 - 1500 - 2000 - 2500 - 3000 - 5000 - 6000 kg
	ALCS2B/310T	S2-B		10000 kg
		TR-1		500 - 1000 - 2000 - 3200 kg 6300 kg 10000 kg
		TR-2		17000 kg 25000 kg 50000 kg 75000 kg

	Code	Model	Disp. Atex	Available capacities
	ALCDCO23	DCO-2		3 - 4 - 5 - 7,5 - 10 t
	ALCDCO33	DCO-3		5 - 10 - 15 - 20 - 25 t
	ALCDCO43	DCO-4		30 - 40 - 50 t
		CR-1		2,5 - 5 - 10 t
		CR-2		20 - 30 t
	ALCSPA/4	SP-A (4000 div.)		10 - 15 - 20 - 25 - 30 - 40 - 50 t
	ALCSPD/4	SP-D (4000 div.)		10 - 15 - 20 - 25 - 30 - 40 - 50 t
		CS-A		10 - 15 - 20 - 25 - 30 - 35 - 40 - 50 t
		CS-DP		10-15-20-25-30-35-40-50 Tn
		CS-DC (CP/CM)		10-15-20-25-30-35-40-50 Tn
		CS-DC (IS)		10-15-20-25-30-35-40-50 Tn
	ALCAC-1A	AC-1A		15 - 20 - 25 - 30 - 35 - 40 Tn 50 - 75 - 100 Tn 200 tn
	ALCAC-1DP	AC-1DP		15 - 20 - 25 - 30 - 35 - 40 Tn 50 - 75 - 100 Tn 200 tn
	ALCAC-1DC	AC-1DC		15 - 20 - 25 - 30 - 35 - 40 Tn 50 - 75 - 100 Tn 200 tn
	ALCAC-2A	AC-2A		15 - 20 - 25 - 30 - 35 - 40 Tn 50 - 75 - 100 Tn 200 tn
	ALCAC-2DP	AC-2DP		15 - 20 - 25 - 30 - 35 - 40 Tn 50 - 75 - 100 Tn 200 tn
	ALCAC-2DC	AC-2DC		15 - 20 - 25 - 30 - 35 - 40 Tn 50 - 75 - 100 Tn 200 tn

Anti-tilt joint kit with cell

	Code	Model	Available capacities
	ALCAC-1A	AC-2A/ANTIV	15 – 20 – 25 – 30 – 35 – 40 Tn
			50 – 75 – 100 Tn
			200 tn
	ALCAC-1DP	AC-2ADP/ANTIV	15 – 20 – 25 – 30 – 35 – 40 Tn
			50 – 75 – 100 Tn
			200 tn
	ALCAC-1DC	AC-2DC/ANTIV	15 – 20 – 25 – 30 – 35 – 40 Tn
			50 – 75 – 100 Tn
			200 tn

(1) Stainless steel load cell + nickel-plated steel anti-tilt accessory
 (2) Stainless steel load cell + Stainless steel anti-tilt accessory

	ALCAC-3A	AC-3A	15 – 20 – 25 – 30 – 35 – 40 Tn
			50 – 75 – 100 Tn
			200 tn
	ALCAC-3DP	AC-3DP	15 – 20 – 25 – 30 – 35 – 40 Tn
			50 – 75 – 100 Tn
			200 tn
	ALCAC-3DC	AC-3DC	15 – 20 – 25 – 30 – 35 – 40 Tn
			50 – 75 – 100 Tn
			200 tn
	ALCAC-3A3R	AC-3A/ANTIV	15 – 20 – 25 – 30 – 35 – 40 Tn
			50 – 75 – 100 Tn
			200 tn
	ALCAC-3DP3R	AC-3DP/ANTIV	15 – 20 – 25 – 30 – 35 – 40 Tn
			50 – 75 – 100 Tn
			200 tn
	ALCAC-3DC3R	AC-3DC/ANTIV	15 – 20 – 25 – 30 – 35 – 40 Tn
			50 – 75 – 100 Tn
			200 tn

	Model	DESCRIPTION
	CO1/ANTIV	Load cell mod. CO-1 with anti-tilt system Cap. 300-500-750-1000-1500 kg 4000 div. Stainless steel IP 67  
	TA0/ANTIV	Load cell model TA-0 with anti-tilt system Cap. 30-50-75-100-150-200-250-300 kg 4000 div. Nickel-plated steel/inox IP 67 
	TA1/ANTIV	Load cell model TA-1 with anti-tilt system Cap. 500-550-750-1000-1100-1500-1760 kg 4000 div. Nickel-plated steel/inox IP 67  
	CO2/ANTIV	Load cell mod. CO-2 with anti-tilt system Cap. 2000-3000-40000-5000 kg 4000 div. Stainless steel IP 67  
	DCO2/ANTIV-T	Load cell mod. DCO-2 with anti-tilt system type A Cap. 3 - 4 - 5 - 7.5 - 10 t 3000 div. Stainless steel IP 67 
	DCO2/ANTIV-B	Load cell mod. DCO-2 with anti-tilt system type B Cap. 3 - 4 - 5 - 7.5 - 10 t 3000 div. Stainless steel IP 67 
	DCO3/ANTIV-TA	Load cell mod. DCO-3 with anti-tilt system type A Cap. 5 - 10 - 15 - 20 - 25 t 6000 div. Stainless steel IP 67  
	DCO3/ANTIV-B	Load cell mod. DCO-3 with anti-tilt system type B Cap. 5 - 10 - 15 - 20 - 25 t 6000 div. Stainless steel IP 67  

Anti-tilt joint kit with cell

	Model	DESCRIPTION
	DCO3/BAUTO	Load cell mod. DCO-3 with pin self-centring
	DCO3/CB	Load cell mod. DCO-3 with ball system Cap. 5 - 10 - 15 - 20 - 25 t 6000 div. Stainless steel IP 67  
	DCO4/ANTIV	Load cell mod. DCO-4 with anti-tilt system type B Cap. 20 - 25 - 30 - 40 - 50 t 3000 div. Stainless steel IP 67 
	ANTIV/CR-1	Load cell mod. CR-1 with system anti-tilt galvanised steel Cap. 2.5 - 5 - 10 t
	ANTIV-I/CR-1	Load cell mod. CR-1 with system anti-tilt stainless steel Cap. 2.5 - 5 - 10 t
	ANTIV/CR-2	Load cell mod. CR-2 with anti-tilt system in galvanised steel Cap. 20 - 30 t
	ANTIV-I/CR-2	Load cell mod. CR-2 with anti-tilt system in stainless steel Cap. 20 - 30 t
	AND90X32 AND85X32	Lower stainless steel support for SP-A / SP-D Upper stainless steel support for SP-A / SP-D
	AASSCG/SP	Joint support for SP-A / SP-D with plate and counterplate
	ANTIVUELCO/SP	Load Cells with anti-tilt system mod. SP in analogue and digital version Cap. 20 - 25 - 30 - 40 - 50 - 75 - 100 - 200 t 3000 div. Stainless steel IP 68 

Load cell accessories

	Code	DESCRIPTION
	AASSCG-BL	Joint BL kit ••
	AASSCG-FX1 AASSCG-FX2 AASSCG-TA0 AASSCG-TA1	FX-1 Joint Kit •• FX-2 joint kit •• Joint kit TA-0 •• Joint kit TA-1
	AGF5974NM6 AGF5974NM8 AGF5974NM12 AGF5974NM16 AGF5974NM24	M6 joint connection •• M8 joint connection •• M12 joint connection •• M16 joint connection •• M24 joint connection
	AND0580N	Nickel-plated M12 cell foot
	AND0580I	M12 INOX cell foot
	APV0151AM24	Bridge weigher foot M 24 thread
	APV10833NM20X75 APV10613IM20X75	Nickel-plated cell foot M20 M20 stainless steel cell foot
	AASSSB-CO1 AASSSB-CO2	Silent-Block holder for CO-1 (capacity up to 500kg) Silent-Block holder for CO-1 and CO-2 (capacity above 500kg)
	ASG68-4C-A ASG68-4C-A-EX	IP-68 junction box for 4 cells of analogue load with card IP-68 junction box for 4 cells of analogue load with card ATEX version Ex 
	ASG68-6C-A ASG68-6C-A-EX ASG68-6C-D ASG68-6C-D-EX	ABS IP-68 junction box, for 6 analogue load cells (with safety capacitors) ABS IP-68 junction box, for 6 analogue load cells (with capacitors safety) ATEX version Ex  ABS IP-68 junction box, for 6 digital load cells (with safety capacitors) ABS IP-68 junction box, for 6 digital load cells (with safety capacitors) ATEX version Ex 

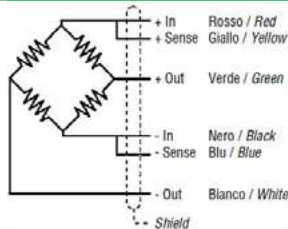
Load cell accessories

	Code	DESCRIPTION
	ASG68-8C-A	IP-68 ABS junction box, for 8 load cells Analogue (with safety capacitors)
	ASG68-8C-A-EX	IP-68 ABS junction box, for 8 load cells Analogue (with safety capacitors) ATEX version Ex 
	ASG68-8C-D	IP-68 ABS junction box, for 8 load cells DIGITAL (with safety capacitors)
	ASG68-8C-D-EX	IP-68 ABS junction box, for 8 load cells DIGITAL (with safety capacitors) ATEX version Ex 
	ASESG4	Electronic junction board for 4 analogue cells
	ASESG8	Electronic junction board for 8 analogue cells
	VAWT20L	0-10V 4-20 mA cell signal converter
	ACVCCVS-6X0,50	Cable for analogue cells 6x0.50 €/mt
	ACV-4V-5MM	Digital cell cable 4x0.50 €/mt
	ACV-4V-MOUSE	Reinforced Digital Load Cell Cable against rodents €/mt
	ACVCABLE 4.5	SP-D Digital cell cable length 4.5m with connectors
	ACVCABLE 7.5	SP-D Digital cell cable length 7.5m with connectors
	ACVCABLE 15	SP-D Digital cell cable 15m long with connectors
	ACVCABLE 25	SP-D Digital cell cable length 25m with connectors
	ASG-4C-AD	ECAD digital analogue junction box
	AASKCT	Mounting kit with U-bolt for traction cells
	AASCUP	Dome cover
	AVC232S-3X0,35	RS-232 serial cable 3x0.35 shielded (for printers or RH repeaters)
	APRET1500	Pretensioning cell sets up to 1,500 kg total
	APRET10000	Pretensioning cell sets up to 10,000 kg total
	ADOCBOL	Certificates for Self-Certification + booklet
		Reprinting certificates of conformity



- Capacity: 5/7/10/15/18/20/36/40 kg
- Up to 6000 divisions OIML-R60
- Measuring element from steel alloy
- Corrosion inhibitor protection in nickel-plated
- Protected against humidity IP-67
- High accuracy with off-center loads 380x380
- Material stainless steel

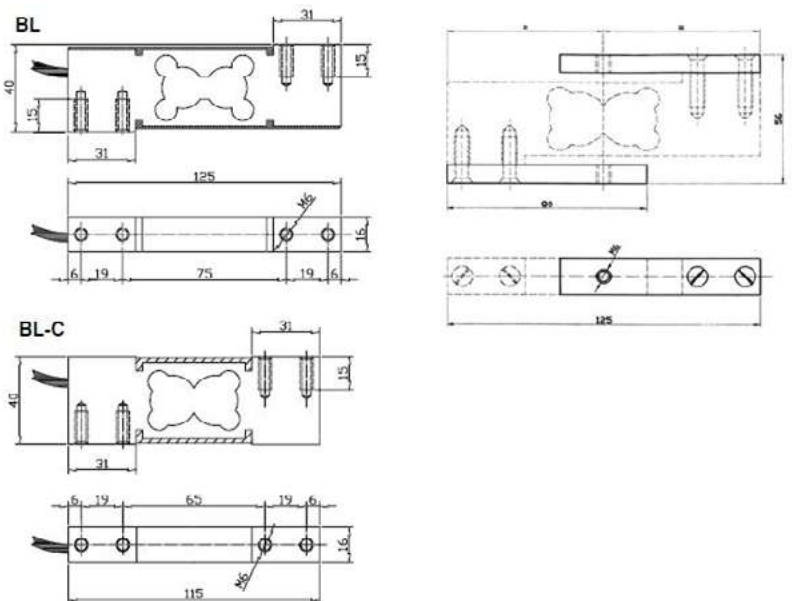
Connection



Technical data:

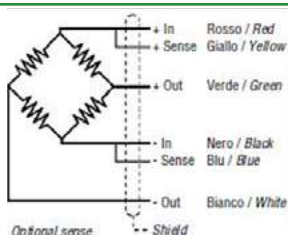
Accuracy class	C3-C6
Rated output	$2 \pm 10\%$ mV/V
Vmin	Emax/18000
Range of excitation	5 ± 15 V
Input resistance	$390 \pm 3 \Omega$
Output resistance	$350 \pm 3 \Omega$
Temperature limits OIML R60	$-10^\circ\text{C} / +40^\circ\text{C}$
Insulation resistance	$>5000 \text{ M}\Omega$

Dimensions mm



- Capacity: 25/50/75/100/150/200/250 kg
- Up to 6000 divisions OIML-R60
- Measuring element from steel alloy
- Corrosion inhibitor protection in nickel-plated
- Protected against humidity IP-67
- High accuracy with off-center loads 500x500
- Material stainless steel

Connection

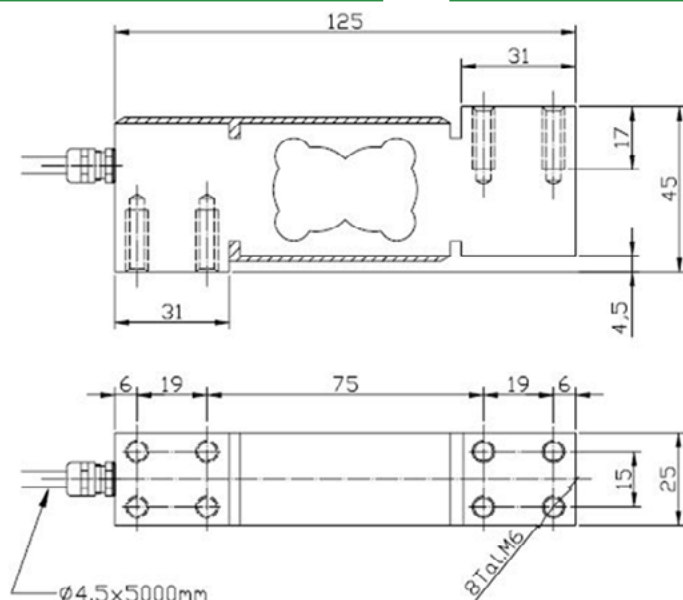


Technical data:

Accuracy class	C3-C6
Rated output	$2 \pm 10\%$ mV/V
Vmin	Emax/12000
Range of excitation	5 ± 15 V
Input resistance	$390 \pm 3 \Omega$
Output resistance	$350 \pm 3 \Omega$
Temperature limits OIML R60	$-10^\circ\text{C} / +40^\circ\text{C}$
Insulation resistance	$>5000 \text{ M}\Omega$

Dimensions mm

Fold back arm



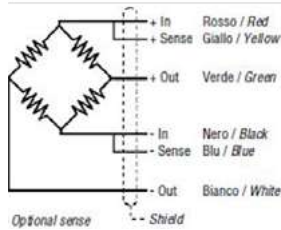
BS - 1

CE Certificate
N° E-98-02.C03



- Capacity: 50/75/100/150/200/250/300/500 kg
- 4000 divisions OIML-R60
- Measuring element from steel alloy
- Corrosion inhibitor protection in nickel-plated
- Available in inox steel
- Protected against humidity IP-67
- High accuracy with off-center loads 600x600

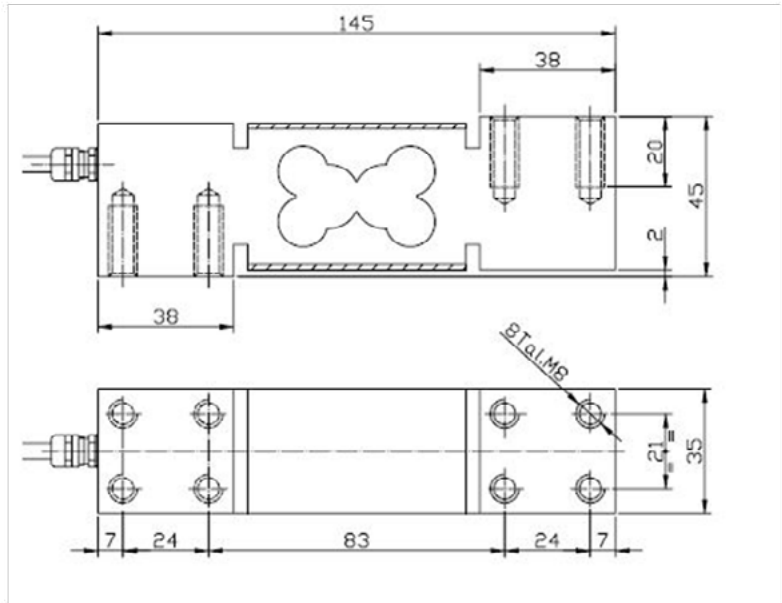
Connection



Technical data:

Accuracy class	C3
Rated output	$2 \pm 10\%$ mV/V
Vmin	Emax/10000
Range of excitation	5±15 V
Input resistance	$390 \pm 3 \Omega$
Output resistance	$350 \pm 3 \Omega$
Temperature limits OIML R60	-10°C / +40°C
Insulation resistance	>5000 MΩ

Dimensions mm



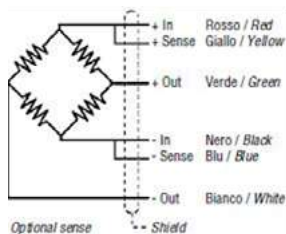
BS - 2

CE Certificate
N° E-98-02.C03



- Capacity: 300/500/750/1000 kg
- 4000 divisions OIML-R60
- Measuring element from steel alloy
- Available in inox steel
- Corrosion inhibitor protection in nickel-plated
- Protected against humidity IP-67
- High accuracy with off-center loads 800x800

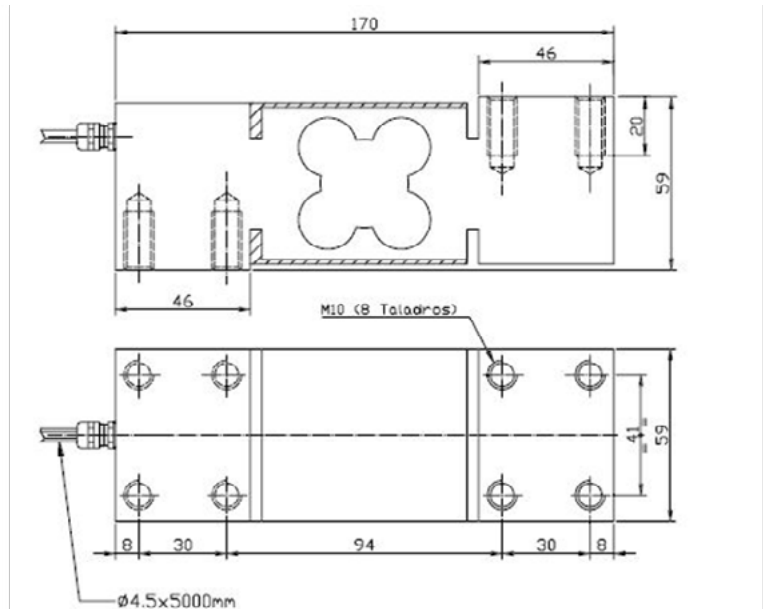
Connection



Technical data:

Accuracy class	C3
Rated output	$2 \pm 10\%$ mV/V
Vmin	Emax/10000
Range of excitation	5±15 V
Input resistance	$390 \pm 3 \Omega$
Output resistance	$350 \pm 3 \Omega$
Temperature limits OIML R60	-10°C / +40°C
Insulation resistance	>5000 MΩ

Dimensions mm



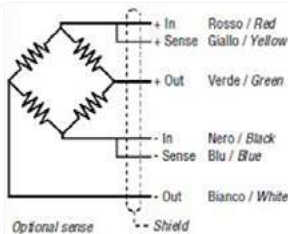
FX-1

CE Certificate
N° E-97-02.C09



- Capacity: 10/15/25/50/100/150/200 kg
- 4000 divisions OIML-R60
- Measuring element from steel alloy
- Corrosion inhibitor protection in nickel-plated
- Hermetical soldered
- Protected against humidity IP-68
- Material stainless steel

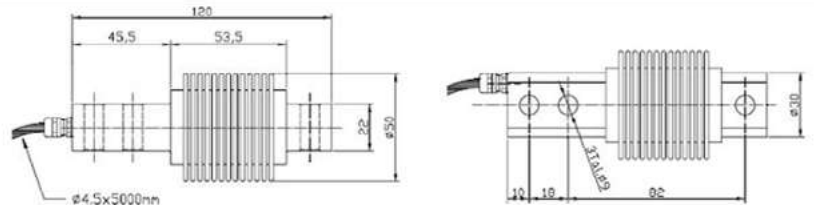
Connection



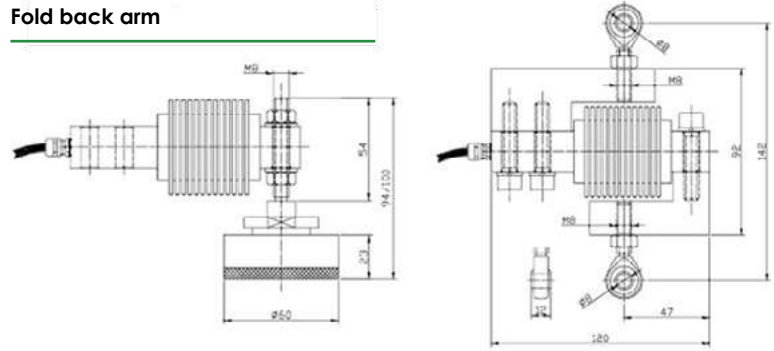
Technical data:

Accuracy class	C4
Rated output	$2 \pm 0.1\% \text{ mV/V}$
Vmin	$E_{\text{max}}/10000$
Range of excitation	$5 \pm 15 \text{ V}$
Input resistance	$350 \pm 3 \Omega$
Output resistance	$350 \pm 3 \Omega$
Temperature limits OIML R60	$-10^\circ\text{C} / +40^\circ\text{C}$
Insulation resistance	$>5000 \text{ M}\Omega$

Dimensions mm



Fold back arm



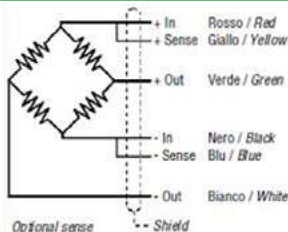
FX-2

CE Certificate
N° E-97-02.C09



- Capacity: 15/25/30/50/75/100/150/200/250/300/500/750/1000/1500 kg
- 4000 divisions OIML-R60
- Measuring element from steel alloy
- Available in inox steel
- Corrosion inhibitor protection in nickel-plated
- Hermetical soldered
- Protected against humidity IP-68
- Material stainless steel

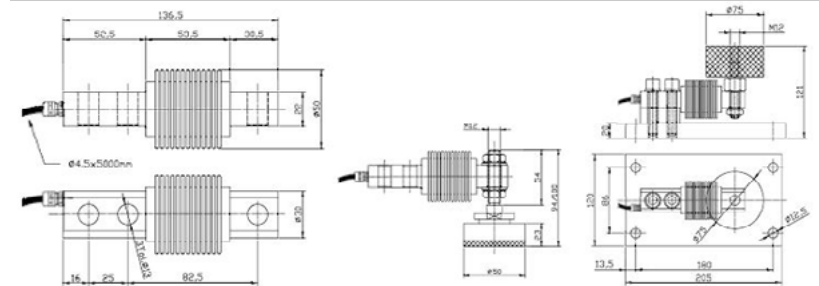
Connection



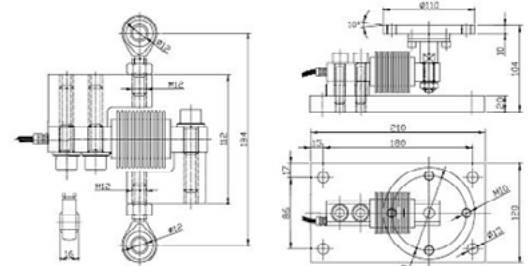
Technical data:

Accuracy class	C4
Rated output	$2 \pm 0.1\% \text{ mV/V}$
Vmin	$E_{\text{max}}/10000$
Range of excitation	$5 \pm 15 \text{ V}$
Input resistance	$350 \pm 3 \Omega$
Output resistance	$350 \pm 3 \Omega$
Temperature limits OIML R60	$-10^\circ\text{C} / +40^\circ\text{C}$
Insulation resistance	$>5000 \text{ M}\Omega$

Dimensions mm



Fold back arm



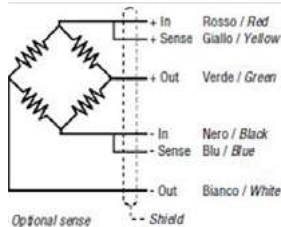
CO-1

CE Certificate
N° E-97-02.C10



- Capacity: 300/500/750/1000/1500 kg
- 4000 divisions OIML-R60
- Measuring element from steel alloy
- Available in inox steel alloy
- Corrosion inhibitor protection in nickel-plated
- Protected against humidity IP-67
- Material stainless steel

Connection

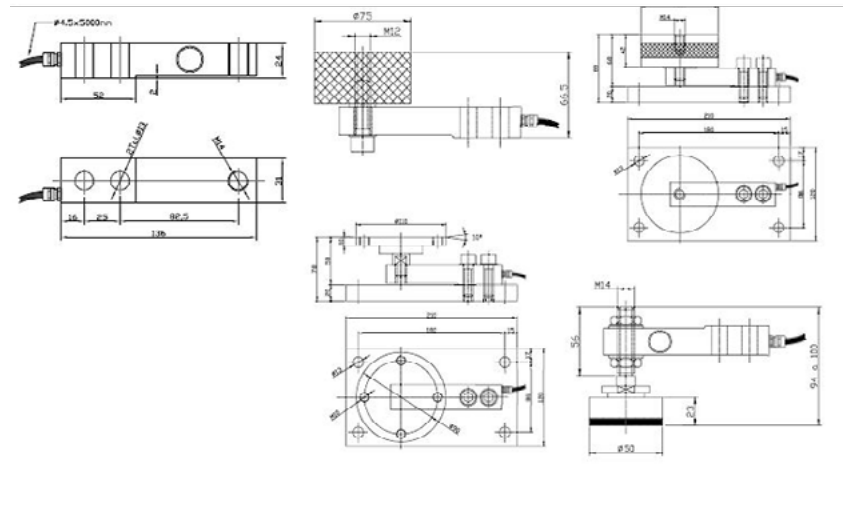


Technical data:

Accuracy class	C4
Rated output	$2 \pm 0.1\% \text{ mV/V}$
Vmin	$E_{\text{max}}/10000$
Range of excitation	$5 \pm 15 \text{ V}$
Input resistance	$350 \pm 3 \Omega$
Output resistance	$350 \pm 3 \Omega$
Temperature limits OIML R60	$-10^\circ\text{C} / +40^\circ\text{C}$
Insulation resistance	$>5000 \text{ M}\Omega$

Dimensions mm

Fold back arm



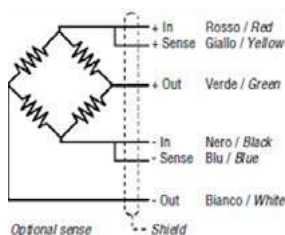
CO-2

CE Certificate
N° E-97-02.C10



- Capacity: 2000/3000/4000/5000 kg
- 4000 divisions OIML-R60
- Measuring element from steel alloy
- Available in inox steel alloy
- Corrosion inhibitor protection in nickel-plated
- Protected against humidity IP-67
- Material stainless steel

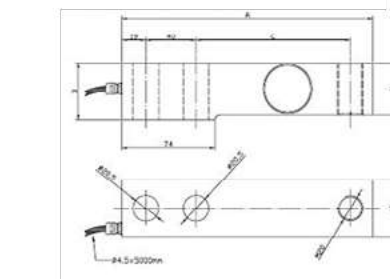
Connection



Technical data:

Accuracy class	C4
Rated output	$2 \pm 0.1\% \text{ mV/V}$
Vmin	$E_{\text{max}}/10000$
Range of excitation	$5 \pm 15 \text{ V}$
Input resistance	$350 \pm 3 \Omega$
Output resistance	$350 \pm 3 \Omega$
Temperature limits OIML R60	$-10^\circ\text{C} / +40^\circ\text{C}$
Insulation resistance	$>5000 \text{ M}\Omega$

Dimensions mm

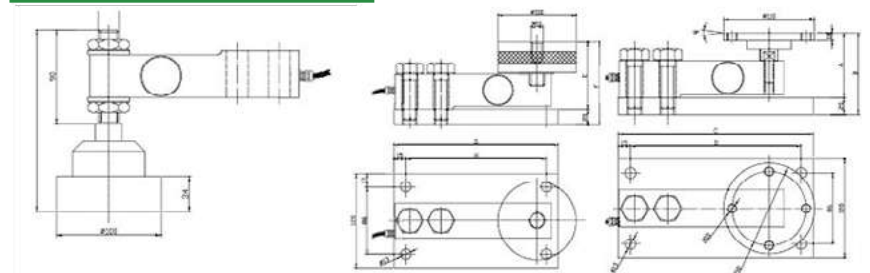


Capacità / Capacity	A	B	C	D
2000 - 3000 - 4000	175	35	98	32
5000	200	45	123	41

Capacità / Capacity	E	F	G	H
2000 - 3000 - 4000	75	95	210	180
5000	85	105	240	210

Capacità / Capacity	A	B	C	D
2000 - 3000 - 4000	69	89	210	180
5000	79	99	237	207

Fold back arm



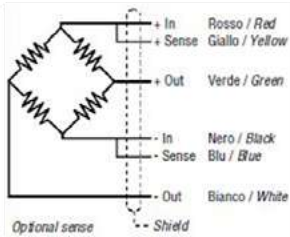
TA-0

CE Certificate
N° E-01-02.C07



- Capacity: 30/50/75/100/150/250/300/500 kg
- Up to 6000 divisions OIML-R60
- Measuring element from steel alloy
- Corrosion inhibitor protection in nickel-plated
- Protected against humidity IP-67
- Material stainless steel

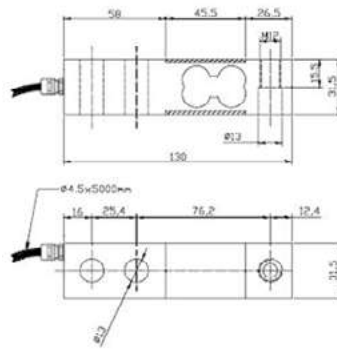
Connection



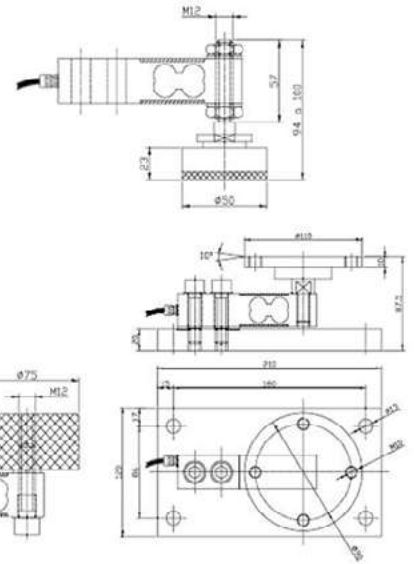
Technical data:

Accuracy class	C4-C6
Rated output	$2 \pm 0.1\% \text{ mV/V}$
Vmin	$E_{\text{max}}/15000$
Range of excitation	$5 \pm 15 \text{ V}$
Input resistance	$350 \pm 3 \Omega$
Output resistance	$350 \pm 3 \Omega$
Temperature limits OIML R60	$-10^\circ\text{C} / +40^\circ\text{C}$
Insulation resistance	$>5000 \text{ M}\Omega$

Dimensions mm



Fold back arm



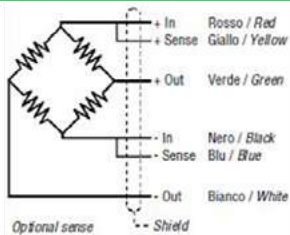
TA-1

CE Certificate
N° E-01-02.C07



- Capacity: 400/500/750/1000/1500/2000 kg
- Up to 4000 divisions OIML-R60
- Measuring element from steel alloy
- Corrosion inhibitor protection in nickel-plated
- Protected against humidity IP-67
- Material stainless steel

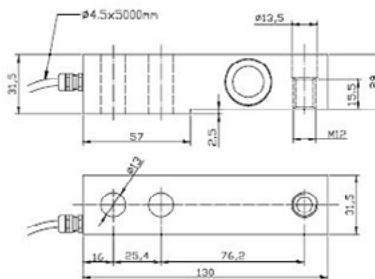
Connection



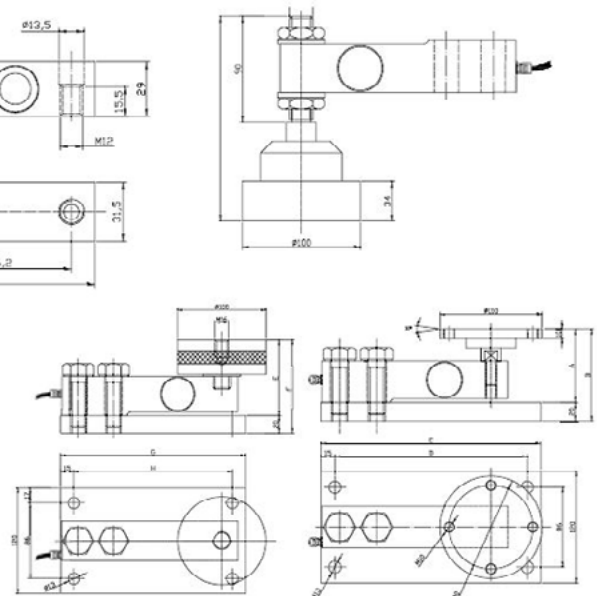
Technical data:

Accuracy class	C4-C6
Rated output	$2 \pm 0.1\% \text{ mV/V}$
Vmin	$E_{\text{max}}/15000$
Range of excitation	$5 \pm 15 \text{ V}$
Input resistance	$350 \pm 3 \Omega$
Output resistance	$350 \pm 3 \Omega$
Temperature limits OIML R60	$-10^\circ\text{C} / +40^\circ\text{C}$
Insulation resistance	$>5000 \text{ M}\Omega$

Dimensions mm



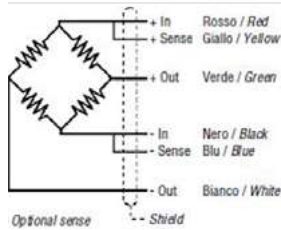
Fold back arm





- Capacity: 30/50/75/100/150 kg
- 6000 divisions OIML-R60
- Measuring element from steel alloy
- Corrosion inhibitor protection in nickel-plated
- Protected against humidity IP-67
- Material stainless steel

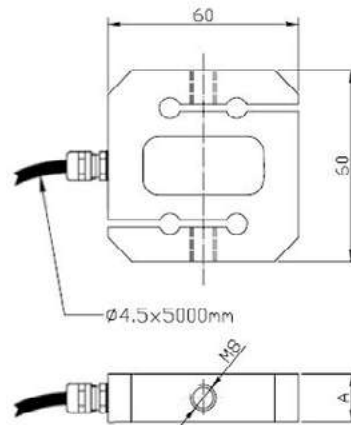
Connection



Technical data:

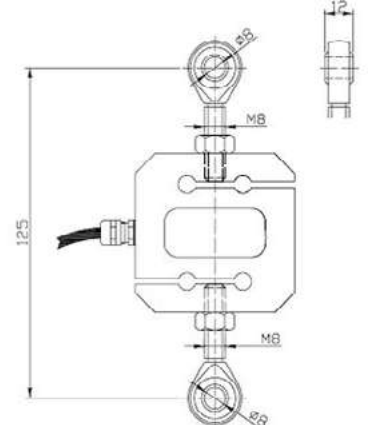
Accuracy class	C4-C6
Rated output	$2 \pm 0.1\% \text{ mV/V}$
Vmin	$E_{\text{max}}/10000$
Range of excitation	$5 \pm 15 \text{ V}$
Input resistance	$350 \pm 3 \Omega$
Output resistance	$350 \pm 3 \Omega$
Temperature limits OIML R60	$-10^\circ\text{C} / +40^\circ\text{C}$
Insulation resistance	$>5000 \text{ M}\Omega$

Dimensions mm



Capacità / Capacity	kg	30	50	75	100	150
G		M6	M8	M8	M8	M8
D		15	15	15	15	20

Fold back arm

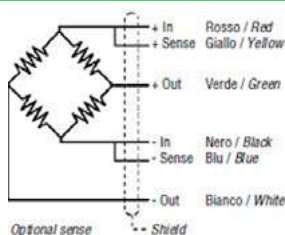


	A	B	C
M6	13°	6	6, 10,5
M8	15°	8	8, 12



- Capacity: 300/500/750/1000 kg
- Up to 4000 divisions OIML-R60
- Measuring element from steel alloy
- Corrosion inhibitor protection in nickel-plated
- Protected against humidity IP-67
- Material stainless steel

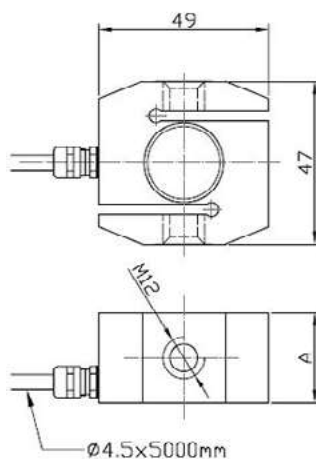
Connection



Technical data:

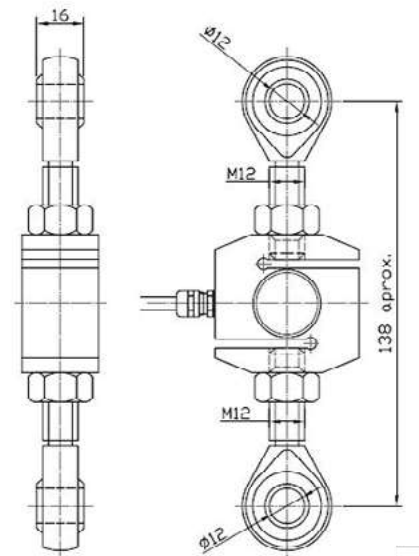
Accuracy class	C4
Rated output	$2 \pm 0.1\% \text{ mV/V}$
Vmin	$E_{\text{max}}/12000$
Range of excitation	$5 \pm 15 \text{ V}$
Input resistance	$350 \pm 3 \Omega$
Output resistance	$350 \pm 3 \Omega$
Temperature limits OIML R60	$-10^\circ\text{C} / +40^\circ\text{C}$
Insulation resistance	$>5000 \text{ M}\Omega$

Dimensions mm



Capacità / Capacity	kg	300	500	750	1000
A		20	26	26	26

Fold back arm



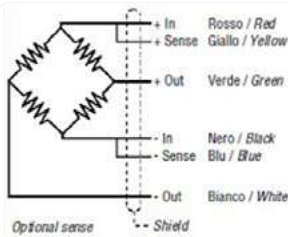
S2 - B

CE Certificate
N° E-00-02.C04



- Capacity: 750/1000/1500/2000/2500/3000/6000/10000 kg
- Up to 4000 divisions OIML-R60
- Measuring element from steel alloy
- Corrosion inhibitor protection in nickel-plated
- Protected against humidity IP-67
- Material stainless steel

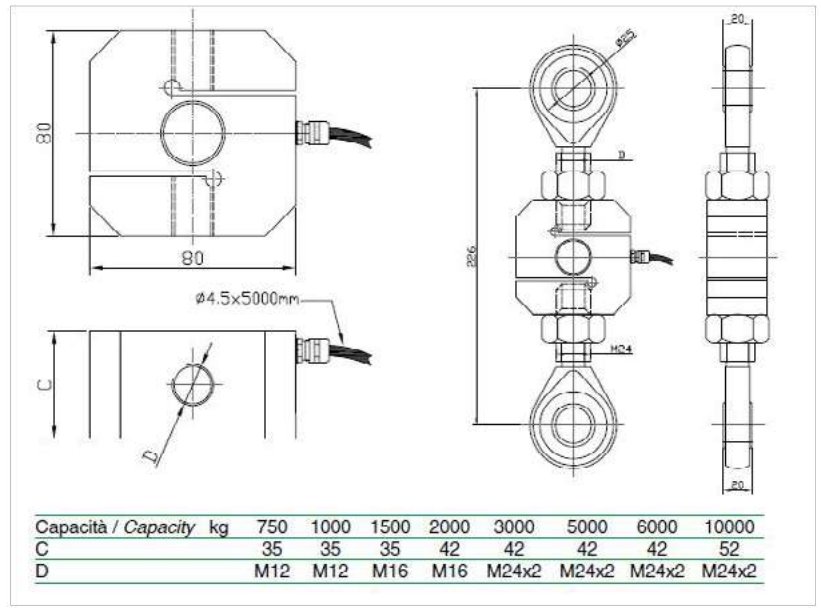
Connection



Technical data:

Accuracy class	C4
Rated output	$2 \pm 0.1\% \text{ mV/V}$
Vmin	$E_{\text{max}}/12000$
Range of excitation	$5 \pm 15 \text{ V}$
Input resistance	$350 \pm 3 \Omega$
Output resistance	$350 \pm 3 \Omega$
Temperature limits OIML R60	$-10^\circ\text{C} / +40^\circ\text{C}$
Insulation resistance	$>5000 \text{ M}\Omega$

Dimensions mm



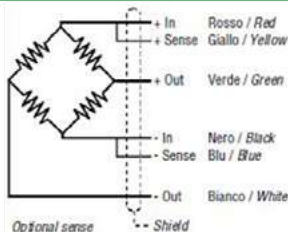
TR - I

CE Certificate
N° E-97-02.C11



- Capacity: 500/1000/2000/3200/6300/10.000 kg
- 3000 divisions OIML-R60
- Measuring element from steel alloy
- Corrosion inhibitor protection in nickel-plated
- Protected against humidity IP-67
- Material stainless steel

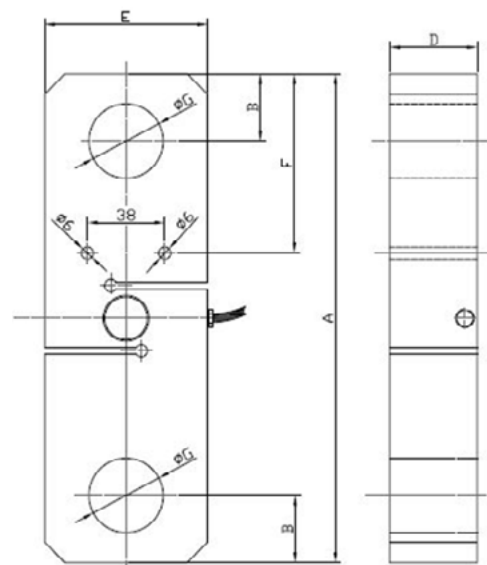
Connection



Technical data:

Accuracy class	C3
Rated output	$2 \pm 0.1\% \text{ mV/V}$
Vmin	$E_{\text{max}}/10000$
Range of excitation	$5 \pm 15 \text{ V}$
Input resistance	$390 \pm 3 \Omega$
Output resistance	$350 \pm 3 \Omega$
Temperature limits OIML R60	$-30^\circ\text{C} / +70^\circ\text{C}$
Insulation resistance	$>5000 \text{ M}\Omega$

Dimensions mm



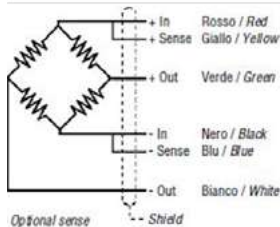
TR - 2

CE Certificate
N° E-97-02.C11



- Capacity: 17/25/50/75/100 Tn
- 3000 divisions OIML-R60
- Measuring element from steel alloy
- Corrosion inhibitor protection in nickel-plated
- Protected against humidity IP-67
- Material
- stainless steel

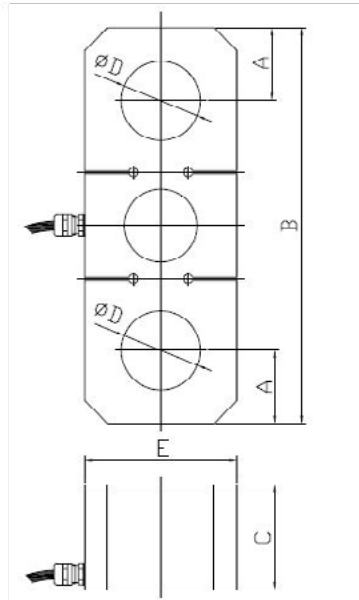
Connection



Technical data:

Accuracy class	C3
Rated output	$2 \pm 0.1\% \text{ mV/V}$
Vmin	$E_{\text{max}}/10000$
Range of excitation	$5 \pm 15 \text{ V}$
Input resistance	$700 \pm 3 \Omega$
Output resistance	$700 \pm 3 \Omega$
Temperature limits OIML R60	$-30^\circ\text{C} / +70^\circ\text{C}$
Insulation resistance	$>5000 \text{ M}\Omega$

Dimensions mm



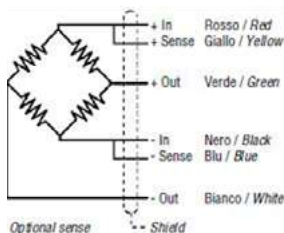
DCO - 2

CE Certificate
N° E-97-02.C11



- Capacity: 3/4/5/7,5/10 t
- 5000 divisions OIML-R60
- Measuring element from steel alloy
- Corrosion inhibitor protection in nickel-plated
- Protected against humidity IP-67
- Material stainless steel

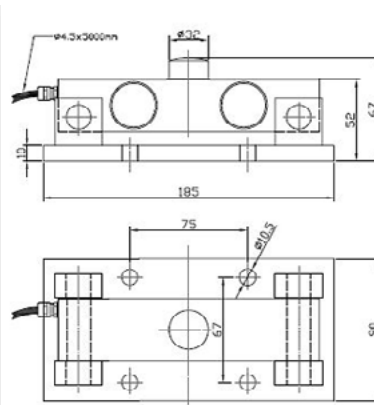
Connection



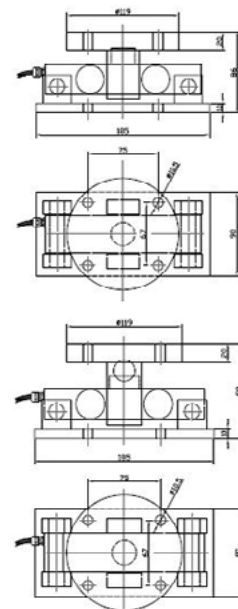
Technical data:

Accuracy class	C4-C5
Rated output	$2 \pm 0.1\% \text{ mV/V}$
Vmin	$E_{\text{max}}/10000$
Range of excitation	$5 \pm 15 \text{ V}$
Input resistance	$700 \pm 3 \Omega$
Output resistance	$700 \pm 3 \Omega$
Temperature limits OIML R60	$-10^\circ\text{C} / +40^\circ\text{C}$
Insulation resistance	$>5000 \text{ M}\Omega$

Dimensions mm



Fold back arm



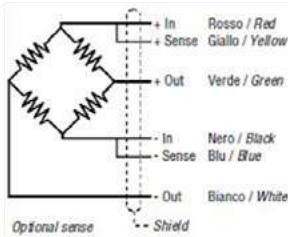
DCO - 3

CE Certificate
N° E-97-02.C11



- Capacity: 5/10/15/20/25/30 †
- Up to 6000 divisions OIML-R60
- Measuring element from steel alloy
- Corrosion inhibitor protection in nickel-plated
- Protected against humidity IP-67
- Material stainless steel

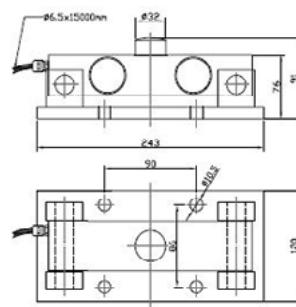
Connection



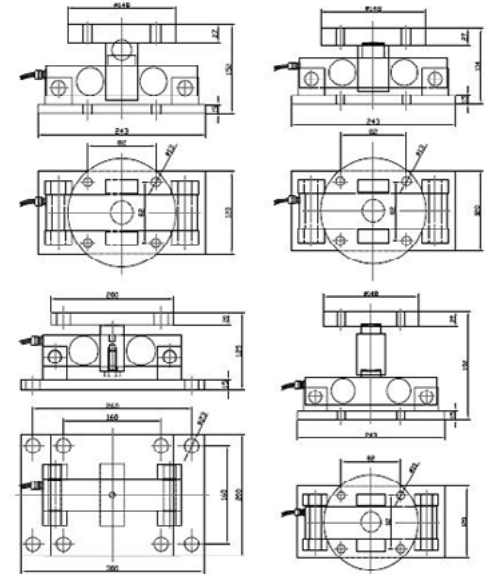
Technical data:

Accuracy class	C6
Rated output	$2 \pm 0.1\% \text{ mV/V}$
Vmin	Emax/10000
Range of excitation	$5 \pm 15 \text{ V}$
Input resistance	$700 \pm 3 \Omega$
Output resistance	$700 \pm 3 \Omega$
Temperature limits OIML R60	$-10^\circ\text{C} / +40^\circ\text{C}$
Insulation resistance	$>5000 \text{ M}\Omega$

Dimensions mm



Fold back arm



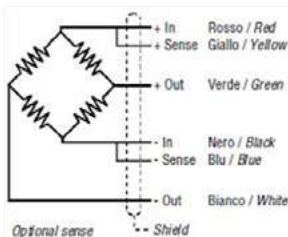
DCO - 4

CE Certificate
N° E-97-02.C11



- Capacity: 20/25/30/40/50 †
- Up to 4000 divisions OIML-R60
- Measuring element from steel alloy
- Corrosion inhibitor protection in nickel-plated
- Protected against humidity IP-67
- Material stainless steel

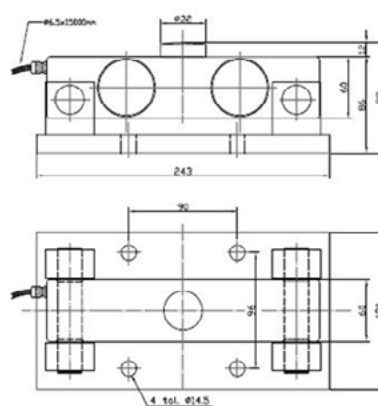
Connection



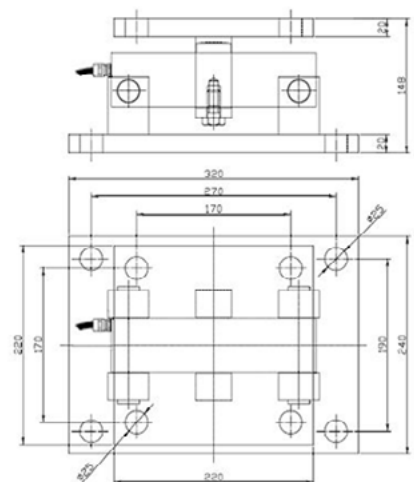
Technical data:

Accuracy class	C4-C6
Rated output	$2 \pm 0.1\% \text{ mV/V}$
Vmin	Emax/10000
Range of excitation	$5 \pm 15 \text{ V}$
Input resistance	$700 \pm 3 \Omega$
Output resistance	$700 \pm 3 \Omega$
Temperature limits OIML R60	$-10^\circ\text{C} / +40^\circ\text{C}$
Insulation resistance	$>5000 \text{ M}\Omega$

Dimensions mm



Fold back arm



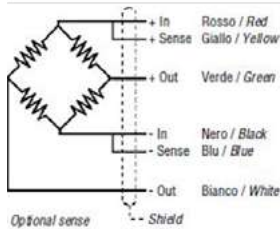
SP - A

CE Certificate
N° E-02-02.C06



- Capacity: 10/15/20/25/30/40/50 t
- Complies with ≤ 4000 divisions CE OIML-R60
- Protected against humidity IP-69 k
- Totally welded
- Only version in
- inox steel

Connection

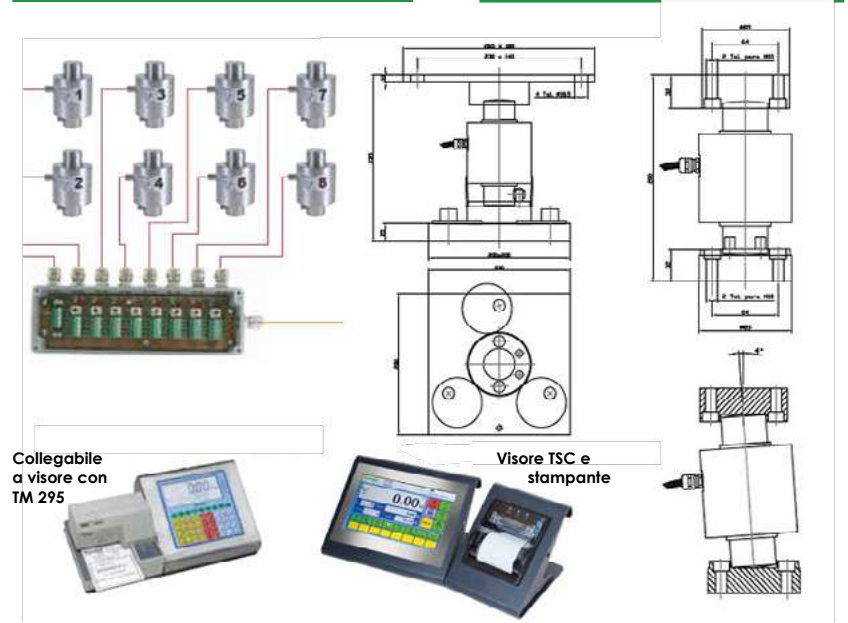


Technical data:

Accuracy class	C4
Rated output	$2 \pm 0.1\%$ mV/V
Vmin	E _{max} /14000
Range of excitation	5 \pm 15 V
Input resistance	$800 \pm 3 \Omega$
Output resistance	$700 \pm 3 \Omega$
Temperature limits OIML R60	-10°C / +40°C
Insulation resistance	>5000 M Ω

Dimensions mm

Fold back arm



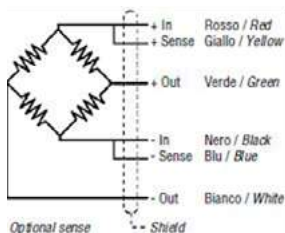
SP - D

CE Certificate
N° E-02-02.C02



- Capacity: 10/15/20/25/30/40/50 t
- Digital cell of load
- Complies with ≤ 4000 divisions CE OIML-R60
- Protected against humidity IP-69 k (DIN 40050)
- Totally wel-ded
- Only version in inox steel

Connection

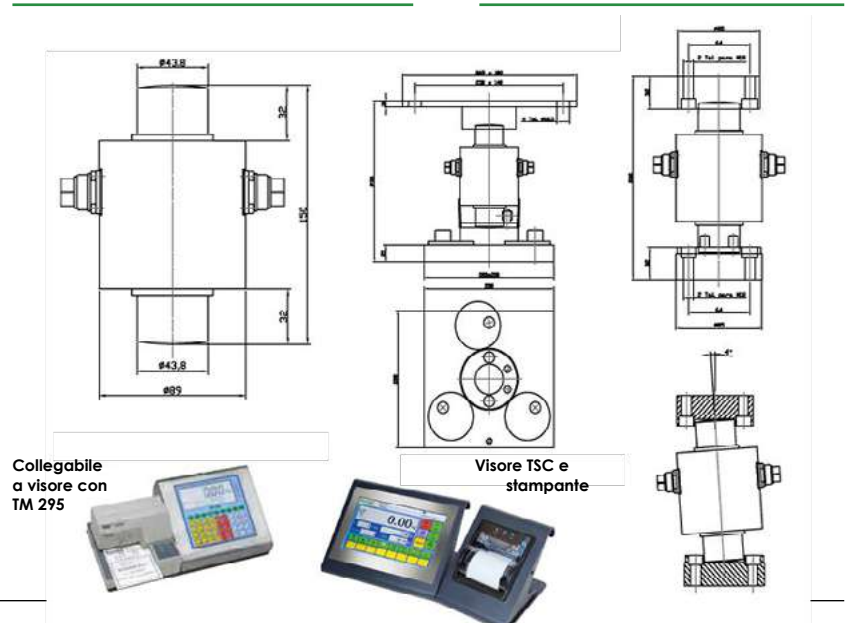


Technical data:

Accuracy class	C4
Vmin	E _{max} /15000
Voltage	8 \pm 15 V DC
Consumption of electricity	35 mA
Speed of transmission	100 kHz
Conversion	40/s
Resolution	24 bit
Temperature limits OIML R60	-10°C/+40°C
Insulation resistance	> 5000 M Ω

Dimensions mm

Fold back arm



con pressacavo e scatola di giunzione

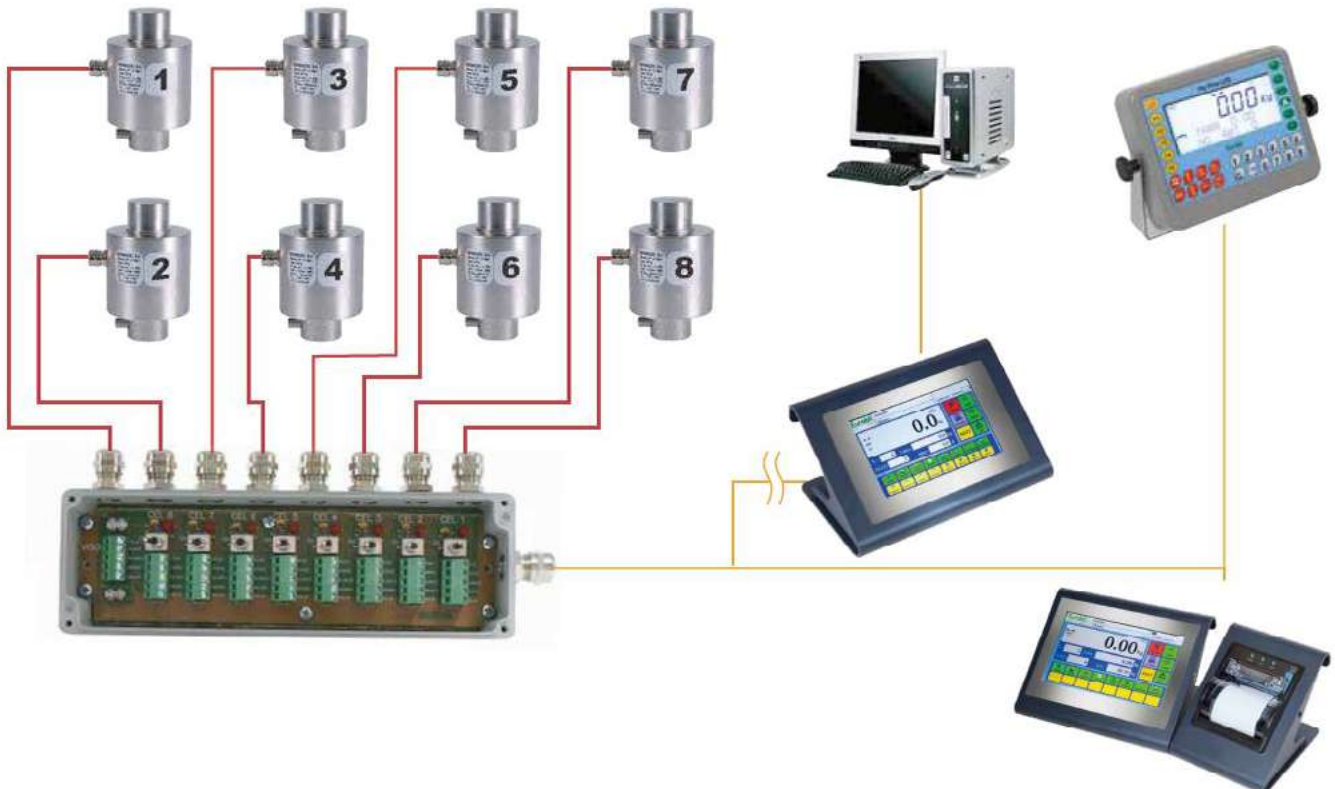
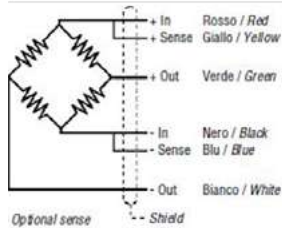
Technical data:

Accuracy class	C4
Vmin	E _{max} /15000
Voltage	8±15 V DC
Consumption of electricity	35 mA
Speed of transmission	100 kHz
Conversion	40/s
Resolution	24 bit
Temperature limits OIML R60	-10°C/+40°C
Insulation resistance	> 5000 MΩ

- Capacity: 10/15/20/25/30/40/50 t
- Digital cell of load
- Complies with ≤ 4000 divisions CE OIML-R60
- Protected against humidity IP-69 k (DIN 40050)
- Totally wel-ded
- Only version in inox steel



Connection



con connettore diretto a visore

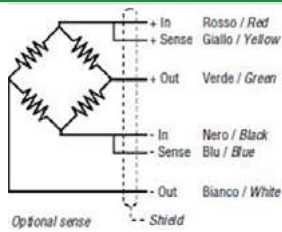
Technical data:

Accuracy class	C4
Vmin	E _{max} /15000
Voltage	8±15 V DC
Consumption of electricity	35 mA
Speed of transmission	100 kHz
Conversion	40/s
Resolution	24 bit
Temperature limits OIML R60	-10°C/+40°C
Insulation resistance	> 5000 MΩ

- Capacity: 10/15/20/25/30/40/50 t
- Digital cell of load
- Complies with ≤ 4000 divisions CE OIML-R60
- Protected against humidity IP-69 k (DIN 40050)
- Totally wel-ded
- Only version in inox steel



Connection

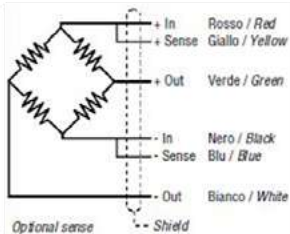


CR-1



- Capacity: 2.5-5-10 t
- Low profile compression load cell
- Up to 1000 divisions OIML-R60
- Fully stainless steel
- Protected against humidity IP-68
- With gas dischargers to protect against atmospheric discharges

Connection

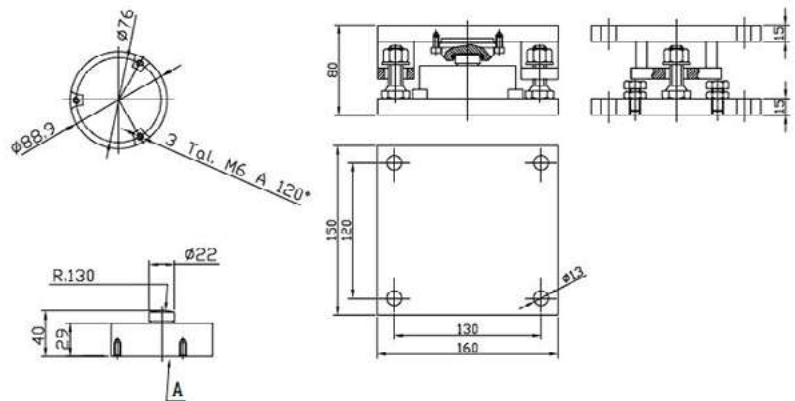


Technical data:

Accuracy class	
Rated output	$2 \pm 0.1\% \text{ mV/V}$
Vmin	$E_{\text{max}}/14000$
Range of excitation	$5 \pm 15 \text{ V}$
Input resistance	$800 \pm 3 \Omega$
Output resistance	$700 \pm 3 \Omega$
Temperature limits OIML R60	$-10^\circ\text{C} / +40^\circ\text{C}$
Insulation resistance	$>5000 \text{ M}\Omega$

Dimensions mm

Fold back arm

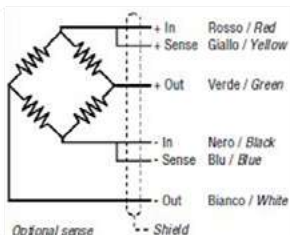


CR-2



- Capacity: 20-30 t
- Low profile compression load cell
- Up to 1000 divisions OIML-R60
- Fully stainless steel
- Protected against humidity IP-68
- With gas dischargers to protect against atmospheric discharges

Connection

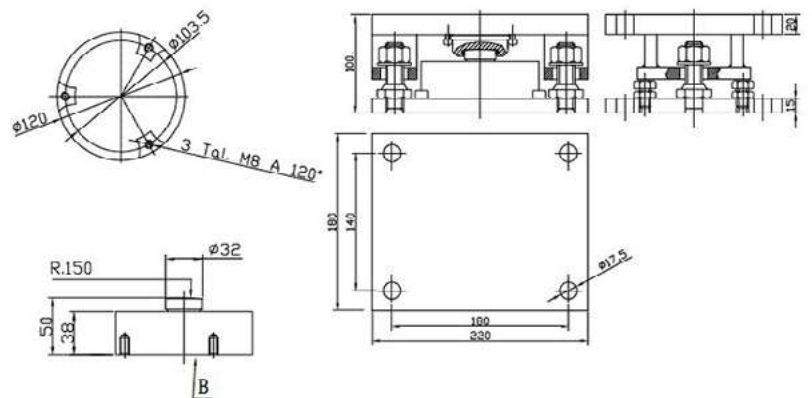


Technical data:

Accuracy class	
Rated output	$2 \pm 0.1\% \text{ mV/V}$
Vmin	$E_{\text{max}}/14000$
Range of excitation	$5 \pm 15 \text{ V}$
Input resistance	$800 \pm 3 \Omega$
Output resistance	$700 \pm 3 \Omega$
Temperature limits OIML R60	$-40^\circ\text{C} / +80^\circ\text{C}$
Insulation resistance	$>5000 \text{ M}\Omega$

Dimensions mm

Fold back arm



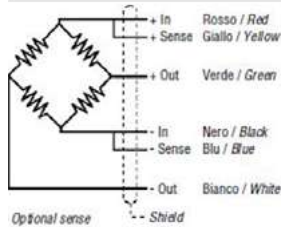
CS - A

CE Certificate
N° E-14-02.C01



- Capacity: 10/15/20/25/30/35/40/50 †
- Compression load cell
- Up to 6000 divisions OIML-R60
- Fully stainless steel
- Fully welded. Protected against humidity IP-69K (DIN40050-9)
- With gas dischargers to protect against atmospheric discharges
- Available cable with metallic cover

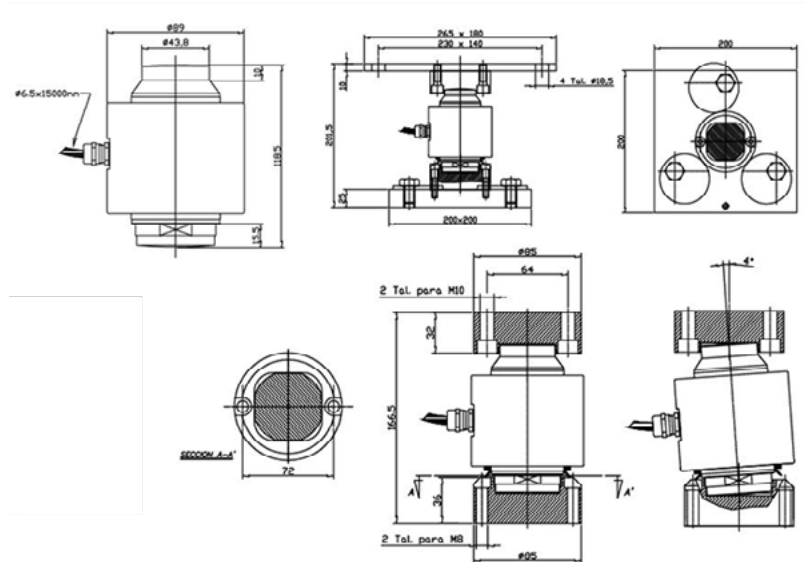
Connection



Technical data:

Accuracy class	C4-C5-C6
Rated output	$2 \pm 0.1\% \text{ mV/V}$
Vmin	Emax/18000
Range of excitation	$5 \div 15 \text{ V}$
Input resistance	$800 \pm 3 \ \Omega$
Output resistance	$700 \pm 3 \ \Omega$
Temperature limits OIML R60	$-10^\circ\text{C} / +40^\circ\text{C}$
Insulation resistance	$>5000 \ \text{M}\Omega$

Dimensions mm



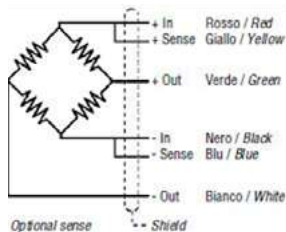
CS - DP

CE Certificate
N° E-14-02.C01



- Capacity: 10/15/20/25/30/35/40/50 †
- Compression load cell
- Up to 6000 divisions OIML-R60
- Fully stainless steel
- Fully welded. Protected against humidity IP-69K (DIN40050-9)
- With gas dischargers to protect against atmospheric discharges
- Available cable with metallic cover

Connection

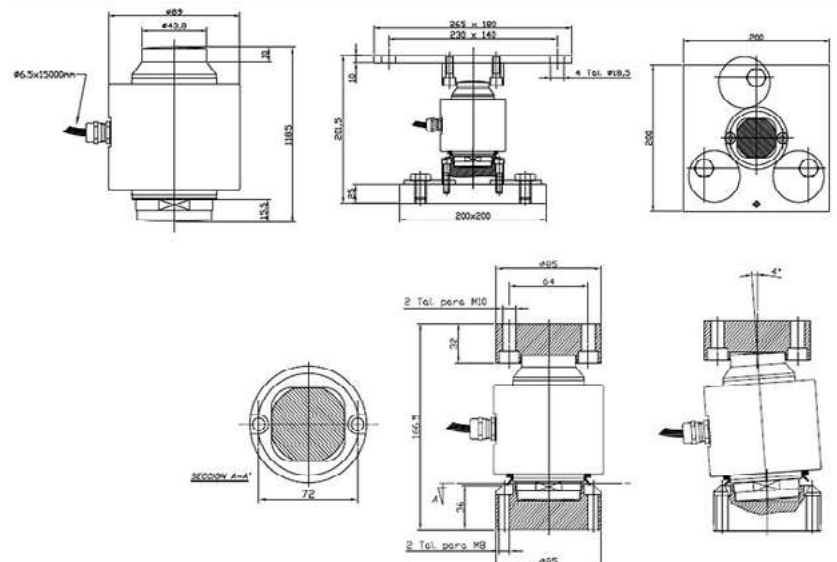


Technical data:

Accuracy class	C4-C5-C6
Rated output	$2 \pm 0.1\% \text{ mV/V}$
Vmin	Emax/18000
Range of excitation	$8 \div 15 \text{ V}$
Input resistance	$800 \pm 3 \ \Omega$
Output resistance	$700 \pm 3 \ \Omega$
Temperature limits OIML R60	$-40^\circ\text{C} / +80^\circ\text{C}$
Insulation resistance	$>5000 \ \text{M}\Omega$

Dimensions mm

Fold back arm

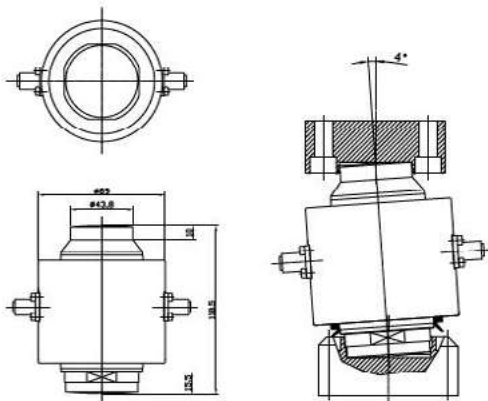
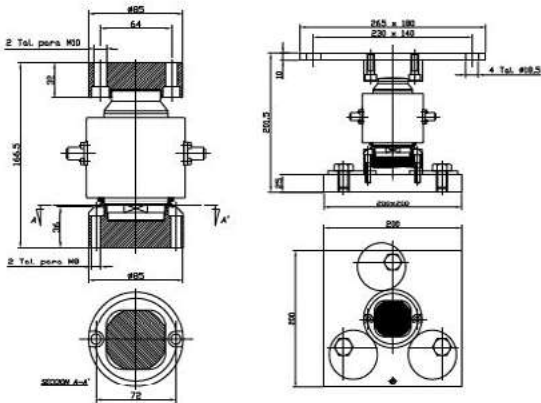
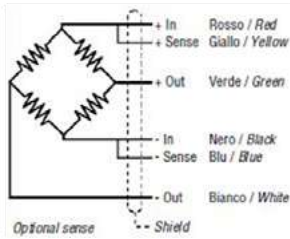


Connettori diretti a visore (non necessita di scatola di giunzione)

- Capacity: 10/15/20/25/30/35/40/50 t
- Digital cell of load
- Complies with ≤ 6000 divisions CE OIML-R60
- Protected against humidity IP-69 k (DIN 40050)
- Totally welded
- Only version in inox steel



Connection



Technical data:

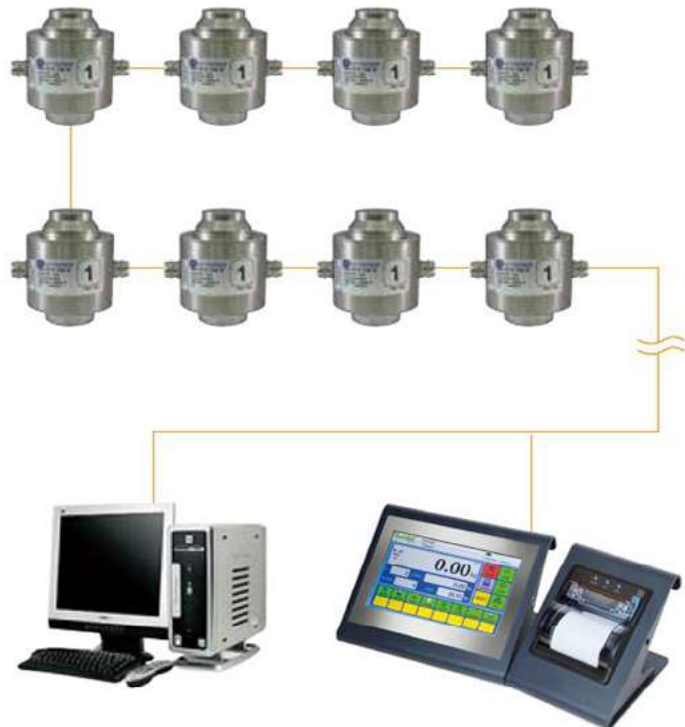
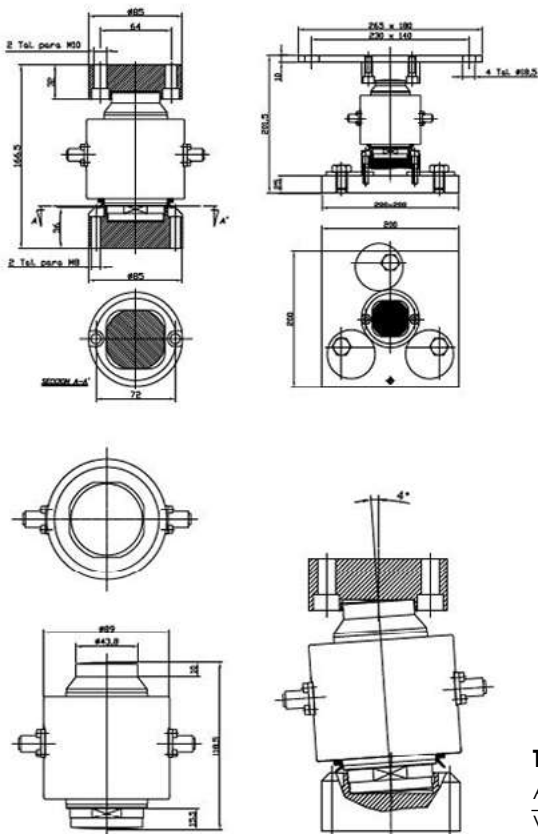
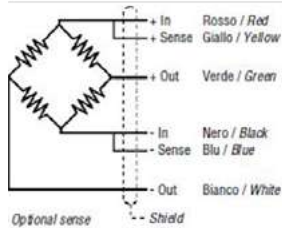
Accuracy class	C4-C5-C6
Voltage	8÷15 V DC
Input resistance	570 ± 3 MΩ
Consumption of electricity	35 mA
Speed of transmission	100 kHz
Conversion	40/s
Resolution	24 bit
Temperature limits OIML R60	-40°C/+80°C
Insulation resistance	> 5000 MΩ

Connettori diretti a visore (non necessita di scatola di giunzione)

- Capacity: 10/15/20/25/30/35/40/50 †
- Digital cell of load
- Complies with ≤ 6000 divisions CE OIML-R60
- Protected against humidity IP-69 k (DIN 40050)
- Totally welded
- Only version in inox steel



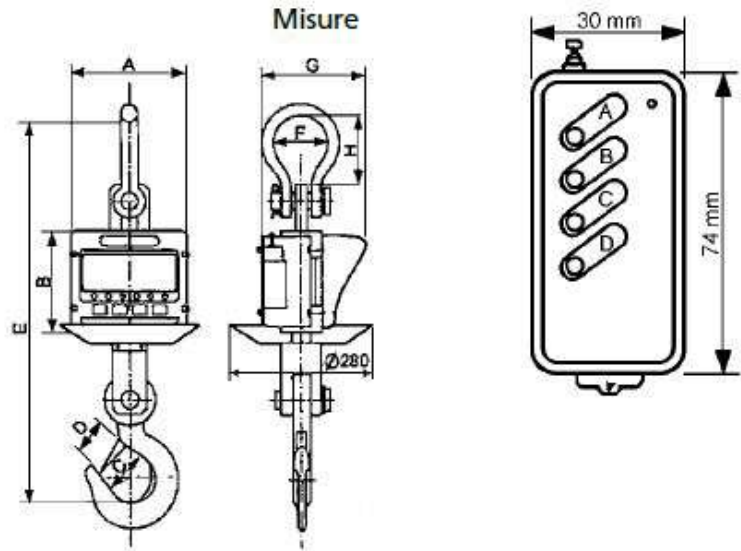
Connection



Technical data:

Accuracy class	C4-C5-C6
Voltage	8÷15 V DC
Input resistance	570 ± 3 MΩ
Consumption of electricity	35 mA
Speed of transmission	100 kHz
Conversion	40/s
Resolution	24 bit
Temperature limits OIML R60	-40°C/+80°C
Insulation resistance	> 5000 MΩ

OCS electronic dynamometer



Technical features:

- 5 Digit LED display.
- Aluminium case.
- Complete with rechargeable battery and charger.
- Complete with remote control.
- 360° swivel hook.

Dimensions mm

Code	A	B	C	D	E	F	G	Weight
OCS-AAE-06	260	195	47	34	530	76	200	13
OCS-AAE-1	260	195	47	34	530	76	200	13
OCS-AAE-2	260	195	47	34	530	76	200	13
OCS-AAE-3	260	195	50	40	547	76	200	14
OCS-AAE-5	260	195	60	48	634	80	210	24
OCS-AAE-10	260	205	70	52	735	90	220	35
OCS-AAE-15	260	215	85	60	855	135	230	51

OCS-AAE dynamometer

LOAD	DIVISION	CODE
600 kg	200 g	ZOCS0T6
1000 kg	200 g	ZOCS1T0
2000 kg	1000 g	ZOCS2T0
3000 kg	1000 g	ZOCS3T0
5000 kg	2000 g	ZOCS5T0
10.000 kg	5000 g	ZOCS10T
15.000 kg	5000 g	ZOCS15T

OCS SMALL dynamometer

LOAD	DIVISION	CODE
60 kg	20 g	ZOCS060
150 kg	50 g	ZOCS150
300 kg	100 g	ZOCS300
500 kg	200 g	ZOCS500



FMS02 PLATFORMS COMPLETE WITH DISPLAY OR PLATFORM ONLY



FMS02 Platforms Main Features:

- Painted steel single-structure weighing platform (with smooth plate) for installation flush with the floor or above ground.
- Weight detection through 4 shear load cells, approved up to 3000 divisions and with IP67 protection.
- 5m shielded connection cable to the display.
- Self-centring articulated feet for each load cell and levelling bubble.
- Junction box complete with board, connectors and with IP68 protection.
- Frame for foundation pit with 4 angles for footplate housing (optional).

FLY/1 Display Main Features:

- Automatic and manual tare device.
- Container: ABS.
- Tare locking/unlocking device.
- Battery level indicator device.
- Counting functions.
- 9 storable tares.
- 99 codes with assignable PMU and management of totalisations.
- Weighing with final totalisation, printing of totals per code.
- Weighing storage and subsequent download to PC.
- Energy autonomy approx. 10 hours.
- Battery charging time approx. 12 hours.
- Programmable auto switch-off device.
- Connection to personal computers, printers, repeaters.

4-cell FMS02 type platforms complete with FLY/1 display, or PLATFORM ONLY

approved up to 3000 M.R. divisions.

Model	Dimensions	Load and DIV		Painted code
		Max kg*	e g*	
With FLY/1 display	100x125	3000	500/1000 M.R.	PFMV3T0-100X125
Platform only	100x125	3000		PFMS3T0-100X125
With FLY/1 display	125x125	3000	500/1000 M.R.	PFMV3T0-125X125
Platform only	125x125	3000		PFMS3T0-125X125
With FLY/1 display	125x150	3000	500/1000 M.R.	PFMV3T0-125X150
Platform only	125x150	3000		PFMS3T0-125X150
With FLY/1 display	150x150	3000	500/1000 M.R.	PFMV3T0-150X150
Platform only	150x150	3000		PFMS3T0-150X150

TYPE FMS02	Painted code	Inox code
Frame 100x125	ACB0585N100X125	ACB0585I100X125
Frame 125x125	ACB0586N125X125	ACB0586I125X125
Frame 125x200	ACB0587N125X150	ACB0587I125X150
Frame 150x150	ACB0589N150X150	ACB0589I150X150
Sheathing insulation		
Platform stand H 200 mm	CAVALLETTO	CAVALLETTO-I



Frame for foundation pit



Platform stand

FR SINGLE CELL PLATFORMS



FR platforms main features:

Small and medium capacity electronic platforms, with off-center load cell, approved. Stainless steel platform that can be connected to any load cell weight indicator.

- Operation with OIML R60-approved aluminium single point load cell with dust and moisture protection to IP65 standards (350 Ohm input resistance).
- Oven-varnished tubular steel frame, adjustable support feet and level.
- Satin-finished AISI 304 stainless steel loading surface as standard. Power supply Max. 15 V dc.
- 3 m shielded connection cable with connectors for connection to the indicator.

Available versions plate mm	Height mm	Load and DIV		Code
		Max kg*	CE-M g	
400x400	125	60	20 g	PMFR40060
400x400	130	150	50 g	PMFR40150
600x600	150	60	20 g	PMFR60060
600x600	150	150	50 g	PMFR60150
600x600	150	300	100 g	PMFR60300
800x800	170	300	100 g	PMFR80300
800x800	170	600	200 g	PMFR80600

PALLET TRUCK SCALE

Mod. APS AW

with 4 load cells



**ABS weight indicator
with backlit LCD display**



The pallet truck scale Mod. APS AW with integrated weighing system with four load cells has a rugged, oven-fire painted sheet steel structure and ABS weight indicator with functional keyboard.

The backlit LCD display with 30 mm high digits guarantees excellent visibility in all ambient lighting conditions. The internal rechargeable battery has an autonomy of 50 hours.

Structure:

- Oven-coated steel structure.
- Lifting capacity: 2000 kg.
- Fork dimensions: 1200 x 550 x 85 mm.
- Total weight: 150 kg. Approx.

Load Cells:

- No. 4 nickel-plated steel load cells with ip67 protection.
- ABS junction box with IP67 protection.

Functionality:

- Tare resetting
- Unit selection: kg., lb.
- rs232 data output.

VERSION	DESCRIPTION	LOAD Max kg*	DIVISION Kg	CODE
APS AW	Structure verniciata	2000 kg	1 kg	ZAPS2T0

FLOOR SCALE A12



Technical features:

- 6-digit backlit LCD display or red LED display
- Additional on-screen status indicators
- Accuracy class 111, 3000 div
- Internal battery power supply 6V DC/4Ah and mains 220V AC - 50/60 Hz
- Operating temperature 0°C to +40°C
- Parts counting function
- Weighing summing function
- Tare and zero return function
- 60 cm column
- 40x40 cm or 60x60 cm stainless steel plate
- Oven-varnished tubular frame.
- Adjustable feet and level bubble.
- CE-M approval and metrological booklet

AVAILABLE VERSIONS INCLUDING WEIGHT INDICATOR WITH COLUMN

Plate mm	Height mm	Load (Max Kg)	CE-M division (g)	Code
400x400	125 mm	60 kg	20 g	A12FR460
400x400	130 mm	150 kg	50 g	A12FR4150
600x600	150 mm	150 kg	50 g	A12FR6150
600x600	150 mm	300 kg	100 g	A12FR6300



Optional accessories

Load (Kg)	Code
Carrello M40	OM40CAR
Carrello M60	OM60CAR

ACS - Z SCALE



Technical specifications:

- Electronic scale for internal laboratory use
- Backlit display
- Automatic switch-off for energy saving
- Internal rechargeable battery (the scale can be used while charging the battery)
- Automatic zero tracking
- Power supply: AC 220V / 50Hz, 110V / 60Hz
- Scale size: 290x320mm
- Plate dimensions: 270x 220mm

Model

ACS-Z capacity 30kg division 1g

Code

BACS-Z-030

General Information

The products mentioned in this price list comply with the European standards for electromagnetic compatibility (EMC) and, where applicable, electrical safety. They are CE marked instruments and can therefore be freely sold in all countries of the European Community or other countries.

Since they are mostly measuring instruments, they may be subject to internal regulations in each country.

Unless otherwise specified, the instruments are duly CE-certified with regard to the European regulations for non-automatic weighing instruments (NAWI) in class III.

In the case of all instruments which are required to meet special

performance requirements not covered by the certification, or which do not have metrological certification, Eurobil accepts no liability for any fraudulent use of the instrument in question by the user. Eurobil will then subject the weighing instruments to metrological verification in accordance with the accuracy class of the instrument in question, which is then marked with plates bearing the symbols required by the EC approval certificates. They are then protected against tampering by seals of the appointed Notified Body.

The relevant declarations of conformity are then issued, which must accompany the instrument at the place of installation.

General Terms and Conditions of Sale

1) PREMISE

The conditions of sale indicated below, will be applied to all customer orders, received and accepted by Eurobil, having as their object the sale of products, machines, consumables or other objects of Eurobil resale. The sales prices, expressed in euros, will be those stated in the price list (which are net of VAT). Special supplies will be quoted from time to time and communicated by means of a duly dated and numbered written offer.

2) VALIDITY OF THE PRICE LIST

This price list shall remain in force until a new version is issued. Eurobil reserves the right to change it at any time without giving any prior notice, but to notify all encoded customers in writing at a later date. In this case, Eurobil will allow a short period of time (approx. 20-30 days), in which to conclude any quotations that the customer still has open negotiations.

3) ORDERS

The customer's order must be submitted to Eurobil in writing (fax or other). Only in exceptional cases will a telephone order be considered. The order, if possible on the letterhead of the writing company and duly signed by the customer. Orders will only be considered accepted after the order confirmation has been issued by Eurobil. This will be sent to the customer, who must return it duly countersigned and reconfirmed in all parts. In the event that this does not occur, the order shall be deemed automatically accepted.

4) DELIVERIES

The delivery dates will be those stated on the order confirmation. It is Eurobil's right to inform the customer when the goods are ready but, even if this is usually the case, we invite the parties concerned to check that this delivery date has been respected by telephoning before collecting the goods.

5) SHIPPING COSTS

All deliveries shall be made to the consignee and, in any case, ex Eurobil, except for those agreed otherwise by mutual agreement. Where possible, Eurobil may arrange shipment via its own contracted carrier and charge the freight costs to the invoice.

6) SHIPPING RISKS

In all cases of transport, including carriage free of charge charged on the invoice, Eurobil is exempt from any liability for theft, loss, damage or other. Only in the event that Eurobil carries out the delivery with its own personnel, Eurobil shall be liable from the Eurobil head office to the place of delivery.

7) TESTING AND INSTALLATION COSTS

The costs of testing and installation are generally excluded and, if required, will be assessed in the final invoice.

8) WARRANTY

Eurobil guarantees that, at the time of delivery, its products are free from defects in materials and workmanship, however, a

warranty period of twelve months from the date of delivery shall apply. Excluded will be any parts which have been tampered with due to misuse by the operator, the carrier or technicians not authorised by Eurobil. Transport costs accompanying the goods to be repaired shall be borne by the customer both in the case of delivery and in the case of collection of the repaired product. Any claims for errors or defects in the products must be made in writing within eight days of receipt of the goods. Eurobil will repair or replace (if it considers it necessary) the products or their parts, excluding any other responsibility for direct damage to persons or things belonging to the customer, resulting from the use or non-use of the same. Parts replaced with new or reconditioned parts shall become the property of Eurobil.

9) PACKAGING COSTS

Packaging, where applicable, shall be charged at cost.

10) RESERVATION OF OWNERSHIP

Goods which are delivered to the customer against his order shall be deemed to be the property of Eurobil until payment of the total agreed price and the relevant duties and taxes. The programmes granted for use to the customer remain, in any case, the exclusive property of Eurobil and/or third parties of which Eurobil is a licensee. In the event of non-payment within the terms stipulated in the order, Eurobil may terminate the order without prejudice to any of its other rights and regain possession of the goods, demanding compensation for all damages deriving from, connected with and related to this, which will be borne by the defaulting customer.

11) PAYMENTS

Standard payments will be as follows:

- first deliveries

absolutely payment by bank transfer in advance with an additional discount of 3% (valid only for prompt payment)

- invoices of less than € 250,00

payment by bank receipt with a 30-day due date invoice end of month - regardless of the usual terms of payment

Special terms of payment shall be taken into account and customised, depending on the customer's annual turnover and, in any case, mutually agreed upon by both parties. Exceptions or disputes shall not entitle the customer to suspend payments.

12) CUSTOMER SERVICE

A telephone assistance service and/or on-site intervention by Eurobil's specialised technical staff is available (in this case a request must be made to the Sales Department). In this case, labour hours (at € 55.00 per hour), any spare parts and travel and travel expenses will be charged (please note that travel hours will be charged at € 70,00 per hour and € 0,65 per km travelled).

13) JURISDICTION

For any dispute, the Court of BUSTO ARSIZIO shall have exclusive jurisdiction.

30°

We have been developing
innovative solutions in industrial
weighing for 30 years



2166



E.M.L. Inspection Body Via Olona,183/D - 21013 Gallarate(VA) -Tel.349 2102380

WE GIVE WARRANTY, RELIABILITY AND PRODUCTION **made in Italy** WEIGHT TO YOUR WORK



Via Olona, 183/C 21013 Gallarate (VA) Italy
Tel. ++39 0331 793449 Fax ++39 0331 793825
commerciale@eurobil.it - marketing@eurobil.it

